



**The Barley Lea, Coventry, CV3 1EW**

**SHELDON  
BOSLEY  
KNIGHT**

LAND AND  
PROPERTY  
PROFESSIONALS



# Property Description

This two bedroom ground floor flat will be an ideal first time or investment purchase.

The accommodation comprises. entrance hall, open plan fitted kitchen/living room with patio doors to the rear (ideal for entertaining), two double bedrooms and a shower room/wc.

Outside there are communal gardens and the property benefits from a reserved parking place.

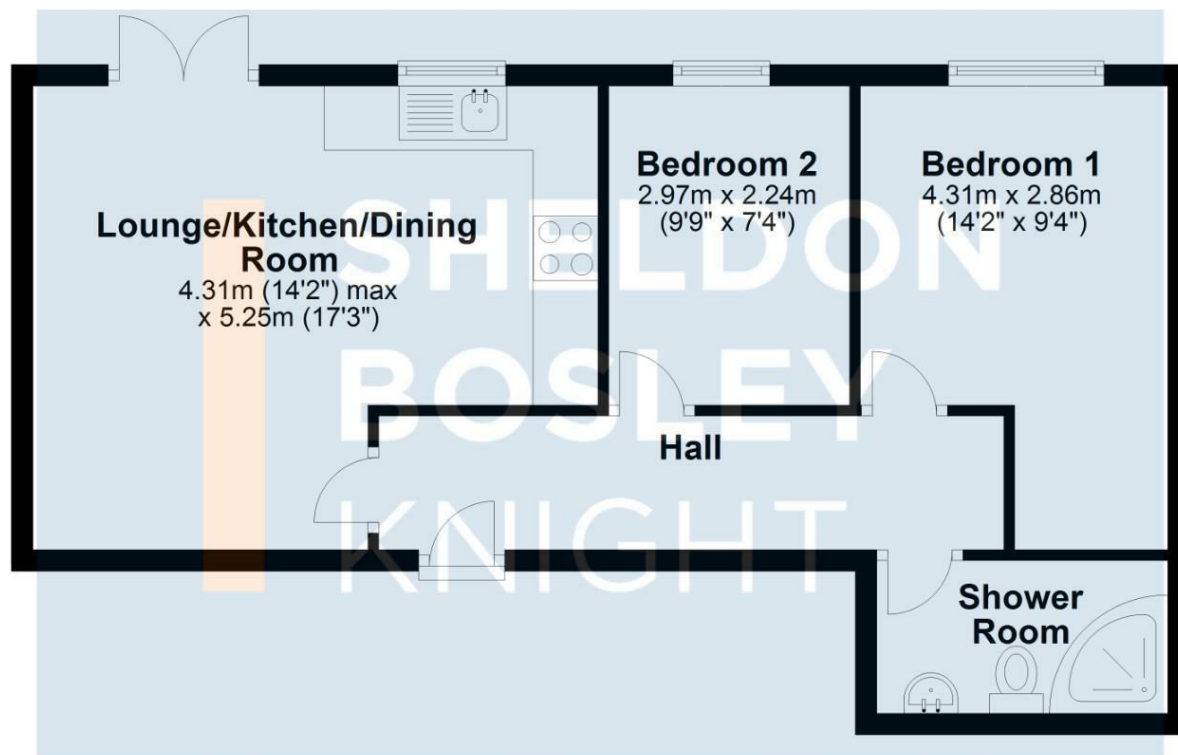






## Ground Floor

Approx. 49.5 sq. metres (533.3 sq. feet)



Total area: approx. 49.5 sq. metres (533.3 sq. feet)

All efforts have been made to ensure that the measurements on this floorplan are accurate however these are for guidance puposes only.  
Plan produced using PlanUp.

## Key Features

- Two bedroom
- Ground floor apartment
- Potential rent at £850.00 per calendar month
- Open plan fitted kitchen/living room
- Shower room/wc
- Patio doors to communal gardens
- Reserved parking space
- Ideal first purchase/investment

**£110,000**

EPC Rating - C

Tenure - Leasehold

Council Tax Band - A

Local Authority -  
Coventry City Council

We routinely refer clients to both our recommended Legal Firm and a panel of Financial Services Providers. It is your decision whether you choose to deal with these companies. In making that decision, you should know that we receive a referral fee