



Turlands Close Coventry CV2 2PT

**SHELDON
BOSLEY
KNIGHT** LAND AND
PROPERTY
PROFESSIONALS



1515.70 sq ft arranged over two floors.

Key Features

- Four Bedroom Detached Home
 - Recently Refurbished!
- Open Plan Kitchen/Dining Area
- Convenient Motor Way Links
- University Hospital- Under 5 Minute Drive
- Boasts Three Bathrooms
 - Fitted Wardrobes
 - 360 Alarm System
 - Garden Bar and Gym
- Ample Sized Landscaped Garden





The Property

This stunning four-bedroom detached house boasts not only a great location near the University Hospital but also convenient motorway links for easy commuting.

There has been no expense spared throughout, with one of the highlights of this property being the open-plan kitchen dining space, which has been fully fitted with Bosch appliances and like majority of the house, was refurbished in 2019.

As you step inside into the entrance hall, there is downstairs wet room and doors into the spacious lounge and open plan kitchen/diner. To the first floor the property offers four generously sized bedrooms, a main ensuite and a family bathroom (with whirlpool bath) providing ample space for everyone in the household. The first and second bedrooms also benefit from fitted wardrobes.

Outside, the property features a lovely South East facing garden complete with a bar and gym - the perfect combination of relaxation and fitness right at your doorstep. To the front there is a driveway with ample space for all vehicles and an excellent 360 alarm system.

Further benefits include: newly replaced combination boiler and cavity wall insulation.

Don't miss out on the opportunity to make this wonderful property your own. Contact us today to arrange a viewing and take the first step towards your dream home in Coventry!





*If you live to be a hundred, I want to live to be a hundred
minus one day - So I never have to live without you*
William Shakespeare



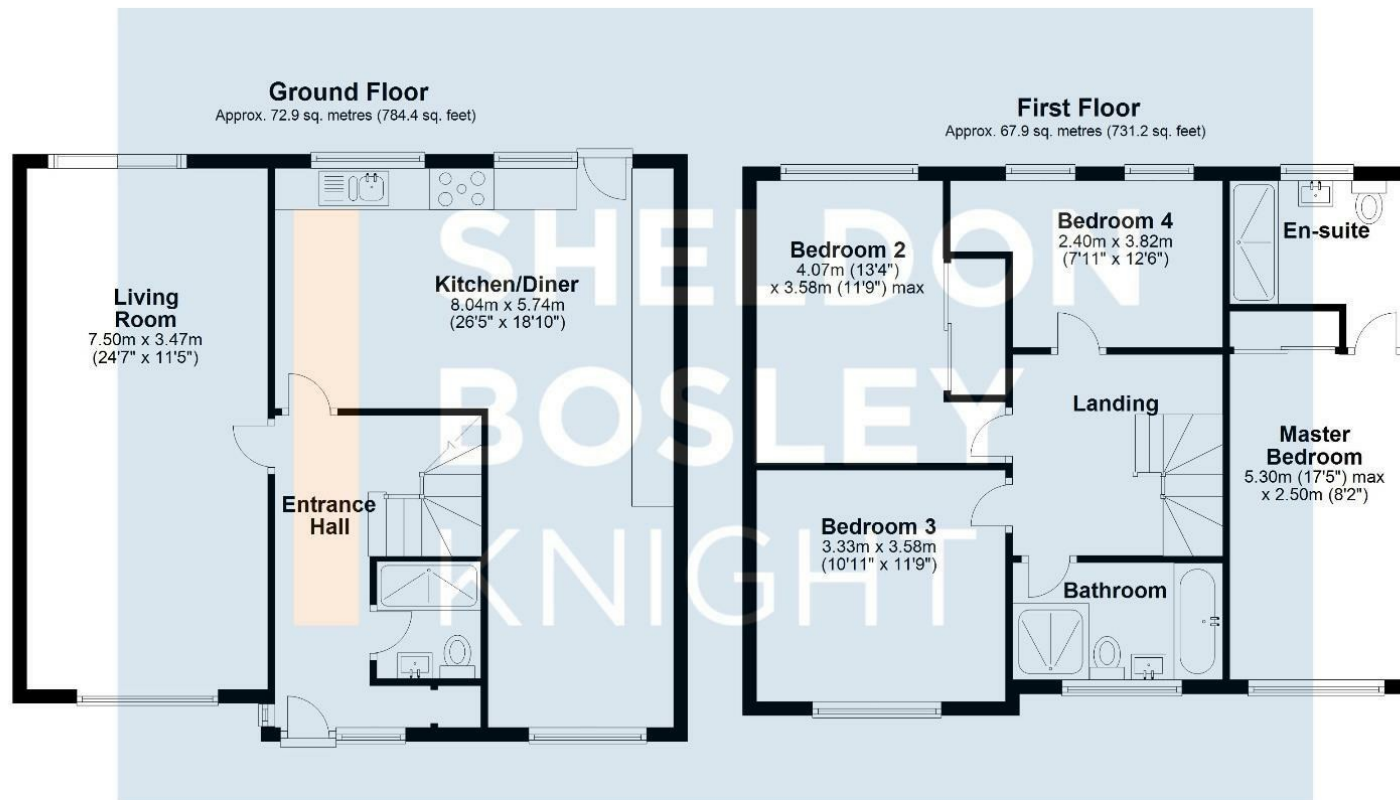






To view this beautiful home, please call
Sheldon Bosley Knight Sales on 02476635555

Floorplan



Total area: approx. 140.8 sq. metres (1515.7 sq. feet)

All efforts have been made to ensure that the measurements on this floorplan are accurate however these are for guidance purposes only.
Plan produced using PlanUp.

