



Church Lane, Coventry, CV2 4AP

**SHELDON  
BOSLEY  
KNIGHT**

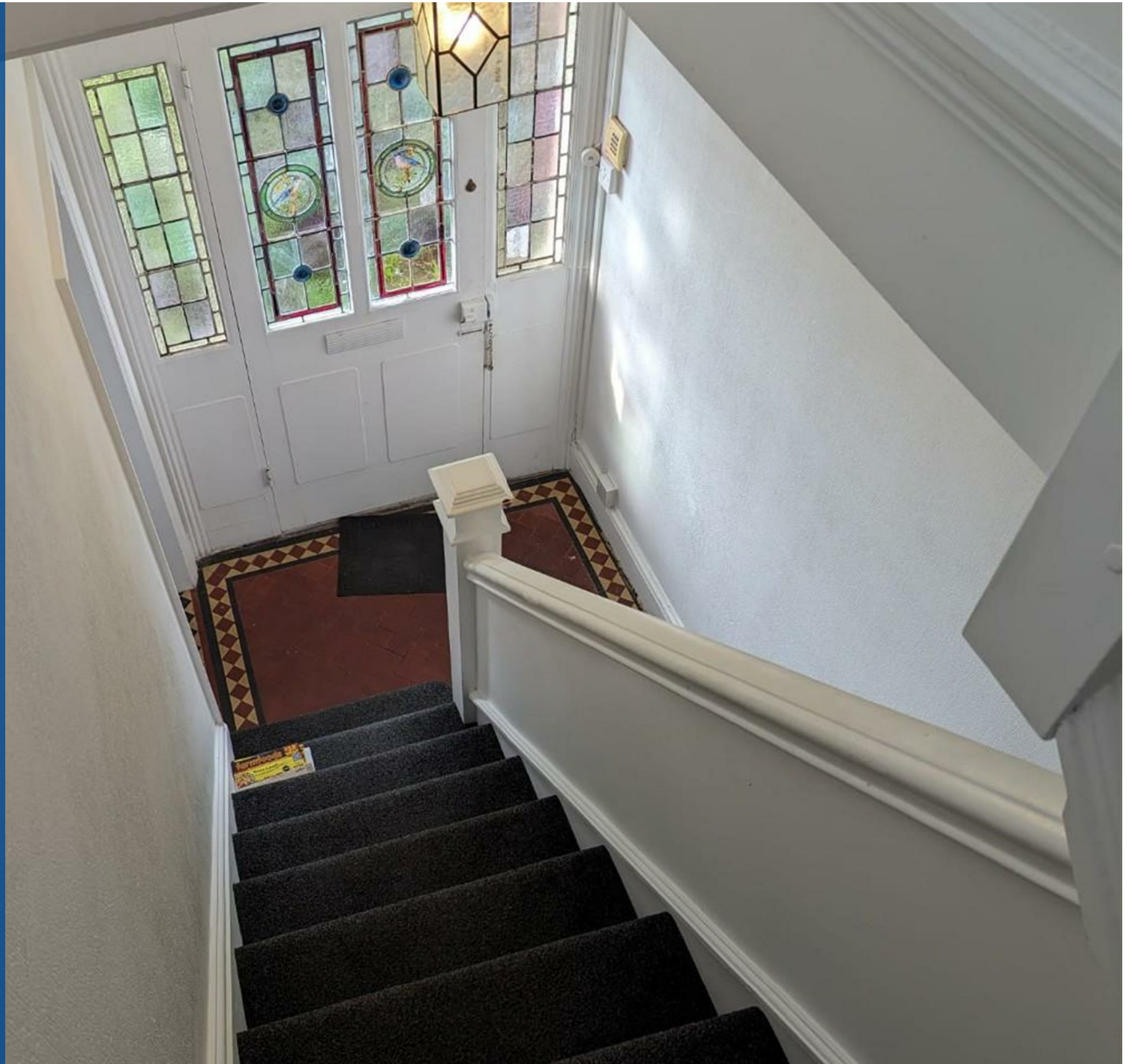
LAND AND  
PROPERTY  
PROFESSIONALS



# Property Description

\*\*\* AVAILABLE IMMEDIATELY \*\*\*

Welcome to this charming property located on Church Lane in Coventry! This delightful end terrace house, built in 1910, offers a perfect blend of character and modern living. As you step inside, you are greeted by two spacious reception rooms, providing ample space for entertaining guests or simply relaxing with your loved ones. The property boasts three cosy bedrooms, offering a peaceful retreat at the end of a long day. With a well-maintained bathroom, you can unwind in a soothing bath or enjoy a refreshing shower in this lovely home. The property spans 1,259 sq ft, providing plenty of room for all your needs and desires. Situated in the heart of Coventry, this house offers not just a place to live, but a lifestyle. Whether you're looking to enjoy a peaceful evening in the garden or explore the vibrant city life, this property caters to all your needs. Don't miss out on the opportunity to make this house your home sweet home. Contact us today to arrange a viewing and take the first step towards owning this wonderful property on Church Lane! Council Tax Band B. EPC Rating D







GROUND FLOOR  
1025 sq.ft. (95.3 sq.m.) approx.



TOTAL FLOOR AREA : 1025 sq.ft. (95.3 sq.m.) approx.  
This floor plan is not to scale and is for guidance purposes only  
Made with Metreplex ©2024

## Key Features

- AVAILABLE IMMEDIATELY
- Three Bedroom End Terrace Property
- Two Large Reception Rooms
- Kitchen Diner with Patio Doors leading out to the rear garden
- Three Double Bedrooms
- Large Rear Garden
- On Street Parking
- Council Tax Band B
- EPC Rating D

**PCM**  
**£1,200 PCM**

EPC Rating - D

Tenure -

Council Tax Band - B

Local Authority -  
Coventry City Council