



New Green Park, Coventry, CV2 1HT

**SHELDON
BOSLEY
KNIGHT**

LAND AND
PROPERTY
PROFESSIONALS

Property Description

This lovely detached park home is situated in a great position upon the popular New Green Park estate which is an 'Over 50s' Site and will not be available to mortgage buyers.

In brief it comprises of an entrance hall; spacious lounge diner; kitchen; bathroom; two storage cupboards and two bedrooms. Externally the property also offers driveway for off road private parking, shed storage, handy under cabin storage and a tidy low maintenance garden with patio area and tidy lawns.

Other benefits include central heating and double glazing throughout.





Key Features

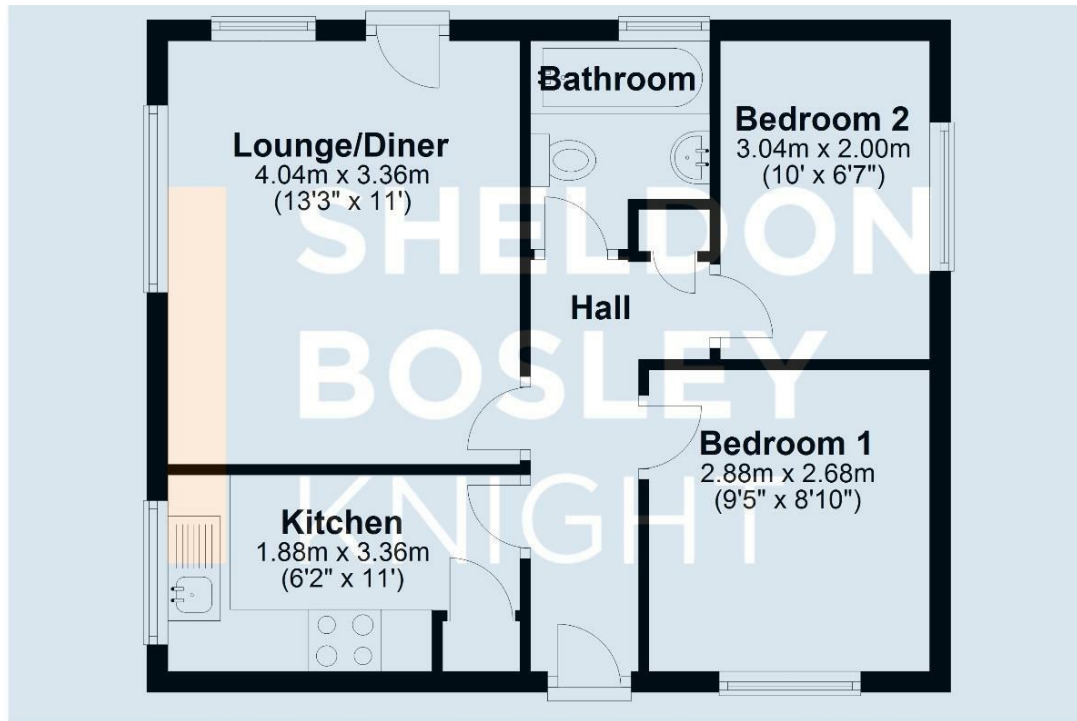
- Current management fee: including water £137.90
- Over 50s Site
- Cash Buyers Only
- Fees to Be Paid to Management
- Detached Park Home
- Two Bedrooms
- Great Position on Site
- Driveway to Front
- Ample Visitor Parking
- No Chain

£75,000



Ground Floor

Approx. 43.8 sq. metres (471.5 sq. feet)



Total area: approx. 43.8 sq. metres (471.5 sq. feet)

All efforts have been made to ensure that the measurements on this floorplan are accurate however these are for guidance purposes only.
Plan produced using PlanUp.



EPC Rating -

Tenure - Freehold

Council Tax Band - A

Local Authority
Coventry City Council



We routinely refer clients to both our recommended legal firm and a panel of financial services providers. It is your decision whether you choose to deal with these companies. In making that decision, you should know that we receive a referral fee.

**SHELDON
BOSLEY
KNIGHT**

LAND AND
PROPERTY
PROFESSIONALS