

Around the local neighbourhood

- 1** REME Museum
SN15 4XX
- 2** Lyneham Primary School
SN15 4QJ
- 3** Royal Wootton Bassett Academy
SN4 7HG
- 4** Wiltshire College & University
SN15 3QD
- 5** Lime Kiln Leisure Centre
SN4 7HG
- 6** Chippenham Community Hospital
SN15 2AJ
- 7** Sainsbury's
SN4 7AX
- 8** Tesco Superstore
SN11 9FQ
- 9** Tesco Express
SN15 4PS

Lyneham Fields Wiltshire

A brand new collection of 2, 3 & 4 bed homes in the rural village of Lyneham, Wiltshire

Lyneham Fields will offer two, three and four bedroom homes designed and built to the highest of standards and providing the best of country living complemented by access to excellent facilities in surrounding towns and villages.

Lyneham itself offers a variety of shops, pubs, and places to eat as well as a primary school. The beautiful Royal Wootton Bassett is approximately 4 miles away with its range of shopping and dining facilities, the vibrant town of Chippenham sits to the South West and Calne sits to the South providing facilities to suit a variety of tastes. For a larger variety of amenities, Swindon is less than 20 mins by car.

The Roman town of Bath is just 10 minutes away by train from Chippenham and offers a combination of shopping, leisure and entertainment with a range of chic restaurants and bars, while nearby Bristol's trendy city centre houses further amenities.

The M4 is approximately 6 miles away providing easy access to Bristol and Cardiff to the West and Swindon, Reading and London to the East. Nearby Chippenham and Swindon train stations have direct connections to Bath, Bristol, Reading and London.

Cover photograph of summer wildflowers in the English countryside, Chippenham, Wiltshire. Not view from the development. Please check the details of the homes you are interested in with our sales consultant. When you have finished with this leaflet please recycle it.

Countryside Partnerships West, H2 Harlequin, Emersons Green, Bristol, BS16 7FN T: 0117 457 8889

lindenhomes.co.uk



Linden
HOMES

Lyneham Fields
South View, Lyneham, Wiltshire SN15 4PG | 01249 510 095
lindenhomes.co.uk

Linden
HOMES




Lyneham Fields

Wiltshire



Development layout




4 bedroom home

-  The Kempthorne
-  The Mylne
-  The Pembroke


3 bedroom home

-  The Beckett
-  The Ledbury

2 bedroom home

-  The Sycamore

-  Shared Ownership

-  Affordable Housing

v visitor space

• removable bollard

This plan has been produced for home identification purposes only and is not to scale. The development layout, landscaping and tenure of all dwellings may be subject to change throughout the course of the development. Finishes and materials may vary from those shown on the plan. Please check the details of your chosen plot and house type with the sales consultant. Development layout plan correct at time of production.



The Sycamore

2 bedroom home

Lyneham Fields

South View, Lyneham, Wiltshire SN15 4PG | 01249 510 095

lindenhomes.co.uk

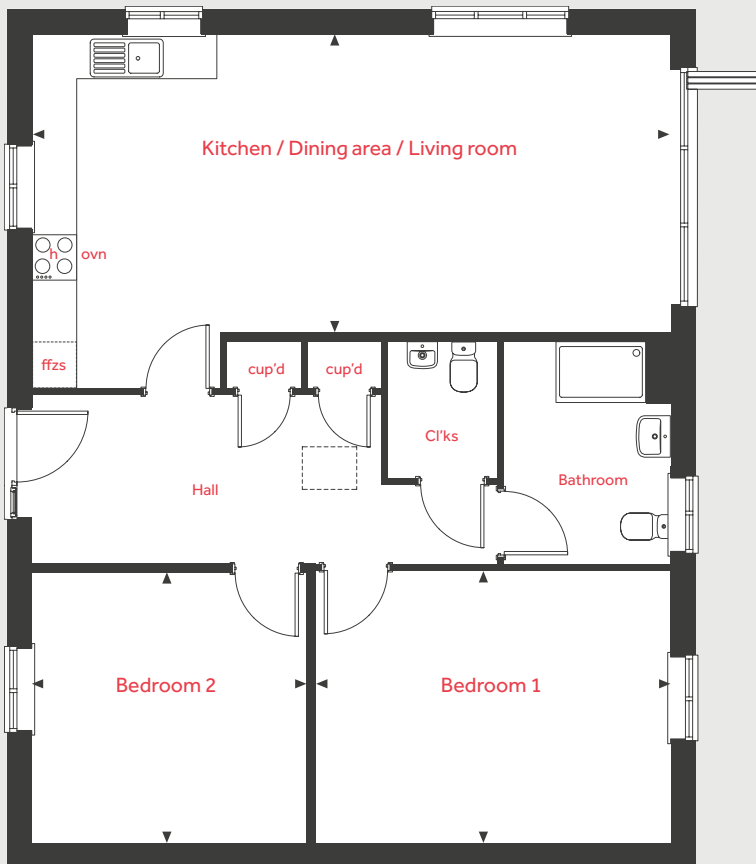
Linden
HOMES

The Sycamore

2 bedroom home

Homes 18, 19

Ground Floor



Ground Floor

Kitchen / Dining area / Living room

8.45m x 3.95m 27'8" x 13'0"

Bedroom 1

4.69m x 3.60m 15'5" x 11'10"

Bedroom 2

3.64m x 3.57m 11'11" x 11'8"

ovn	oven	cup'd	cupboard
h	hob	◀ ▶	measuring points
ffzs	loft hatch	---	reduced ceiling height
	fridge freezer space		

The illustrations shown are computer generated impressions of how the property may look and are indicative only. External details or finishes may vary on individual plots and homes may be built in either detached or attached styles depending on the development layout. Exact specifications, window styles and whether a property is left or righthanded may differ from plot to plot. Please speak to our sales consultant for specific plot details.

The floorplan has been produced for illustrative purposes only. Room sizes shown are between arrow points as indicated on plan. The dimensions have tolerances of + or - 50mm and should not be used other than for general guidance. If specific dimensions are required, enquiries should be made to the sales consultant. The floor plans shown are not to scale. Measurements are based on the original drawings. Slight variations may occur during construction.

08.23

Linden
HOMES



The Beckett

3 bedroom home

Lyneham Fields

South View, Lyneham, Wiltshire SN15 4PG | 01249 510 095

lindenhomes.co.uk

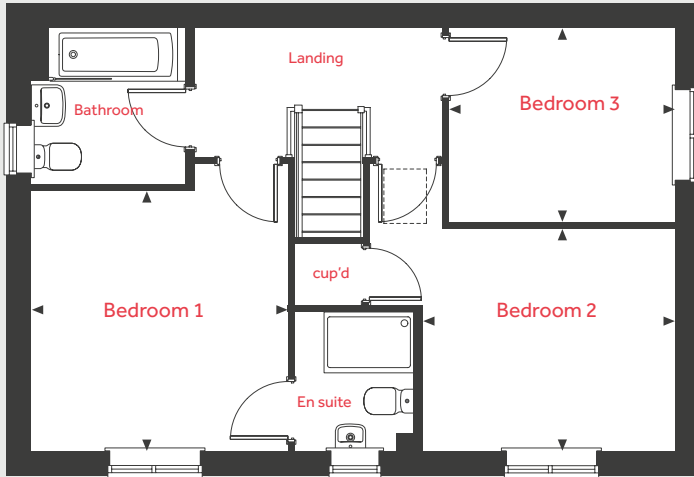
Linden
HOMES

The Beckett

3 bedroom home

Home 31

First Floor



Ground Floor

Kitchen / Dining area

5.59m x 2.94m 18'4" x 9'8"

Living room

5.59m x 3.33m 18'4" x 10'11"

First Floor

Bedroom 1

3.44m x 3.39m 11'3" x 11'2"

Bedroom 2

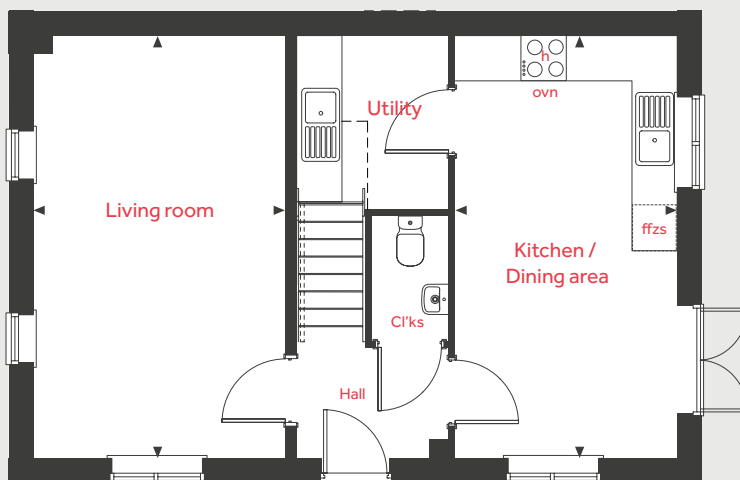
3.34m x 2.94m 10'11" x 9'8"

Bedroom 3

2.99m x 2.56m 9'10" x 8'5"

ovn	oven	cup'd	cupboard
h	hob	◀ ▶	measuring points
▤	loft hatch	---	reduced ceiling height
ffzs	fridge freezer space		

Ground Floor



The illustrations shown are computer generated impressions of how the property may look and are indicative only. External details or finishes may vary on individual plots and homes may be built in either detached or attached styles depending on the development layout. Exact specifications, window styles and whether a property is left or righthanded may differ from plot to plot. Please speak to our sales consultant for specific plot details.

The floorplan has been produced for illustrative purposes only. Room sizes shown are between arrow points as indicated on plan. The dimensions have tolerances of + or -50mm and should not be used other than for general guidance. If specific dimensions are required, enquiries should be made to the sales consultant. The floor plans shown are not to scale. Measurements are based on the original drawings. Slight variations may occur during construction.

08.23

Linden
HOMES



The Beckett

3 bedroom home

Lyneham Fields

South View, Lyneham, Wiltshire SN15 4PG | 01249 510 095

lindenhomes.co.uk

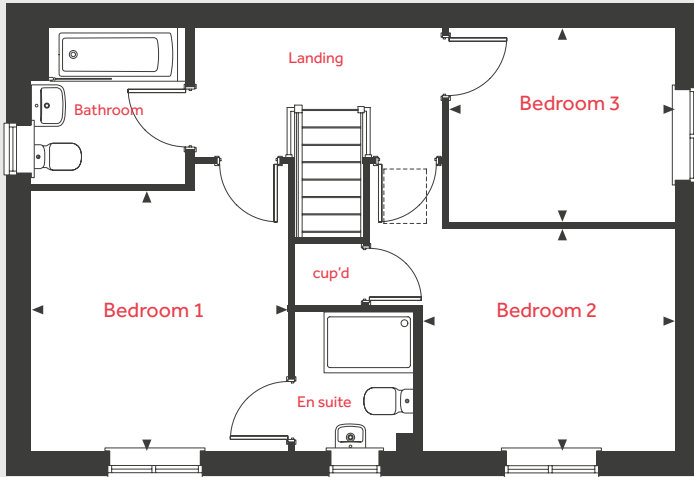
Linden
HOMES

The Beckett

3 bedroom home

Home 50

First Floor



Ground Floor

Kitchen / Dining area

5.59m x 2.94m 18'4" x 9'8"

Living room

5.59m x 3.33m 18'4" x 10'11"

First Floor

Bedroom 1

3.44m x 3.39m 11'3" x 11'2"

Bedroom 2

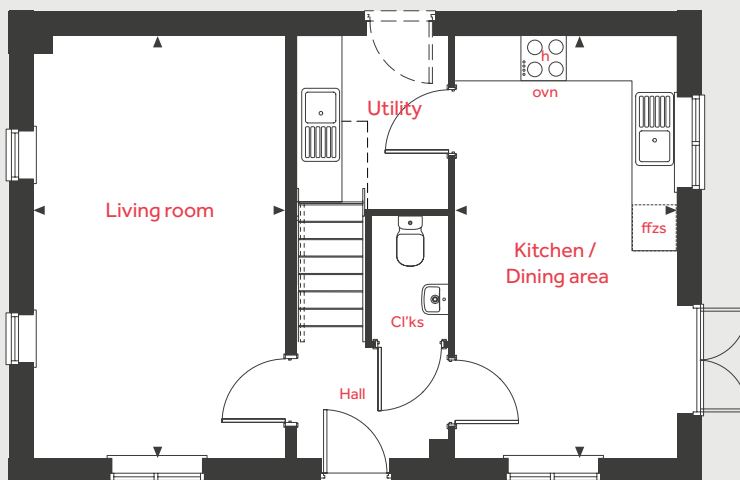
3.34m x 2.94m 10'11" x 9'8"

Bedroom 3

2.99m x 2.56m 9'10" x 8'5"

ovn	oven	cup'd	cupboard
h	hob	< >	measuring points
[dashed box]	loft hatch	- - -	reduced ceiling height
ffzs	fridge freezer space		

Ground Floor



The illustrations shown are computer generated impressions of how the property may look and are indicative only. External details or finishes may vary on individual plots and homes may be built in either detached or attached styles depending on the development layout. Exact specifications, window styles and whether a property is left or righthanded may differ from plot to plot. Please speak to our sales consultant for specific plot details.

The floorplan has been produced for illustrative purposes only. Room sizes shown are between arrow points as indicated on plan. The dimensions have tolerances of + or -50mm and should not be used other than for general guidance. If specific dimensions are required, enquiries should be made to the sales consultant. The floor plans shown are not to scale. Measurements are based on the original drawings. Slight variations may occur during construction.

08.23

Linden
HOMES



The Ledbury

3 bedroom home

Lyneham Fields

South View, Lyneham, Wiltshire SN15 4PG | 01249 510 095

lindenhomes.co.uk

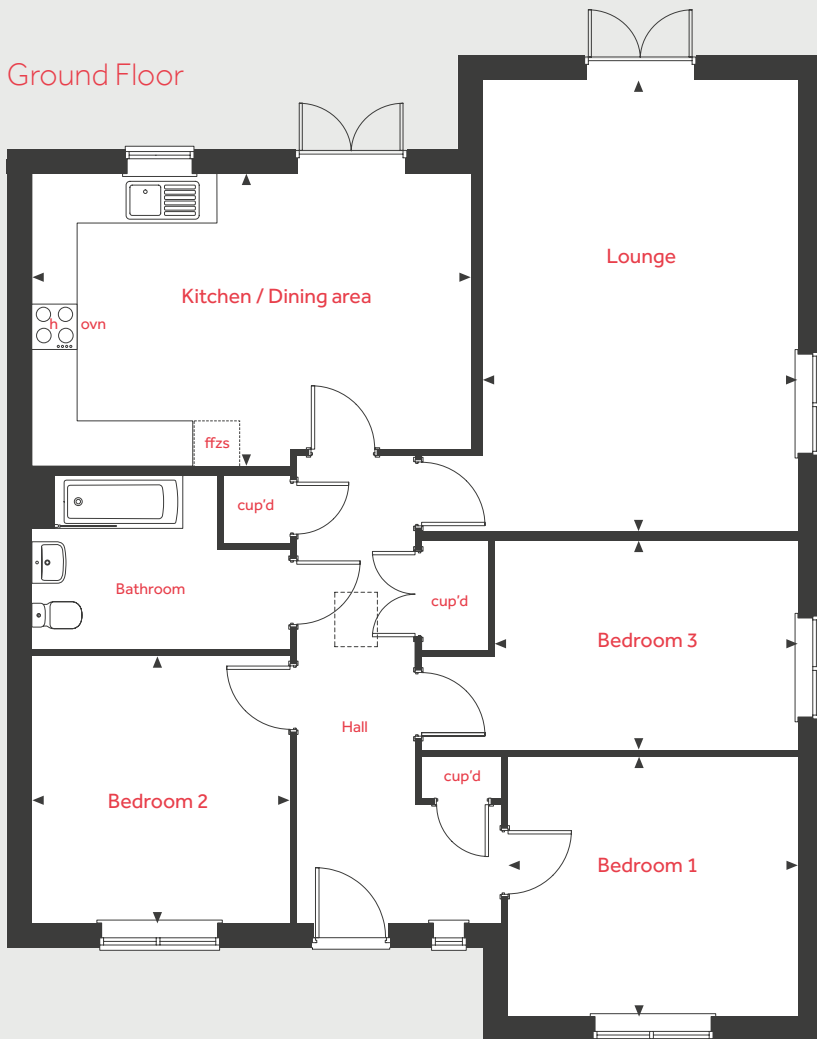
Linden
HOMES

The Ledbury

3 bedroom home

Home 21

Ground Floor



Ground Floor

Kitchen / Dining area

5.89m x 3.92m 19'4" x 12'10"

Lounge

6.02m x 4.22m 19'9" x 13'10"

Bedroom 1

3.89m x 3.48m 12'9" x 11'5"

Bedroom 2

3.57m x 3.46m 11'9" x 11'4"

Bedroom 3

4.05m x 2.80m 13'3" x 9'2"

ovn	oven	cup'd	cupboard
h	hob	< >	measuring points
	loft hatch	- - -	reduced ceiling height
ffzs	fridge freezer space		

The illustrations shown are computer generated impressions of how the property may look and are indicative only. External details or finishes may vary on individual plots and homes may be built in either detached or attached styles depending on the development layout. Exact specifications, window styles and whether a property is left or righthanded may differ from plot to plot. Please speak to our sales consultant for specific plot details.

The floorplan has been produced for illustrative purposes only. Room sizes shown are between arrow points as indicated on plan. The dimensions have tolerances of + or - 50mm and should not be used other than for general guidance. If specific dimensions are required, enquiries should be made to the sales consultant. The floor plans shown are not to scale. Measurements are based on the original drawings. Slight variations may occur during construction.

08.23

Linden
HOMES



The Ledbury

3 bedroom home

Lyneham Fields

South View, Lyneham, Wiltshire SN15 4PG | 01249 510 095

lindenhomes.co.uk

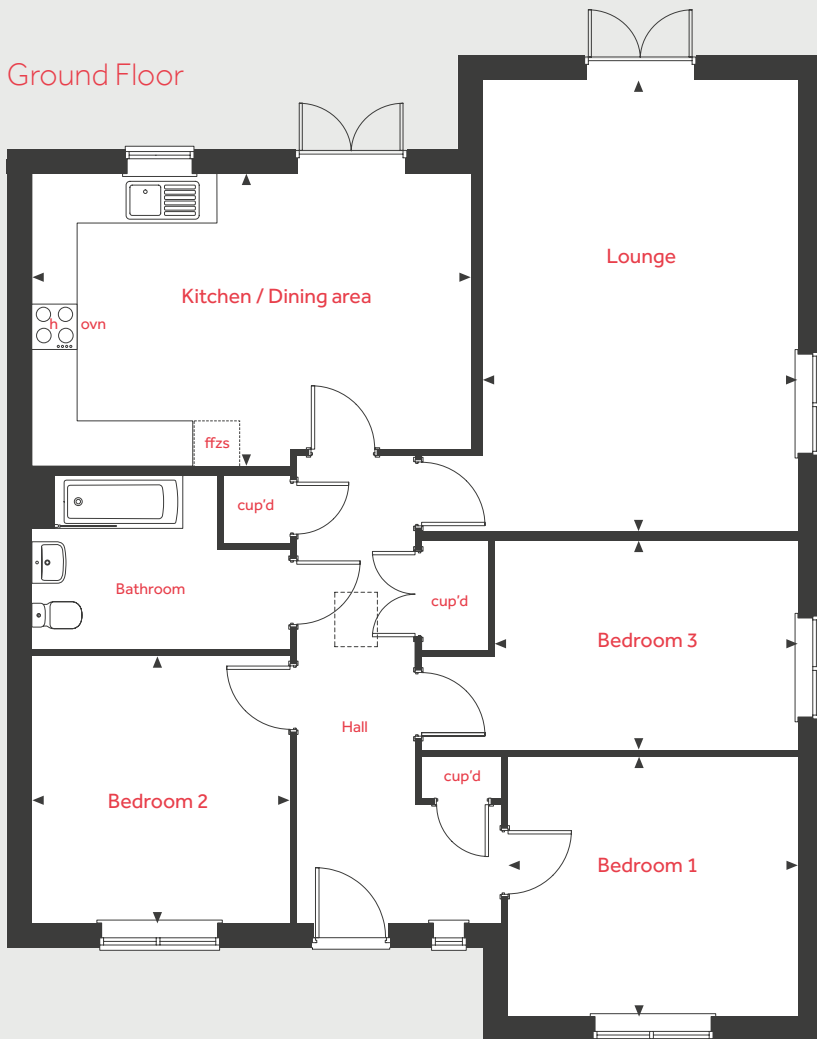
Linden
HOMES

The Ledbury

3 bedroom home

Home 20

Ground Floor



Ground Floor

Kitchen / Dining area

5.89m x 3.92m 19'4" x 12'10"

Lounge

6.02m x 4.22m 19'9" x 13'10"

Bedroom 1

3.89m x 3.48m 12'9" x 11'5"

Bedroom 2

3.57m x 3.46m 11'9" x 11'4"

Bedroom 3

4.05m x 2.80m 13'3" x 9'2"

ovn	oven	cup'd	cupboard
h	hob	< >	measuring points
hatched box	loft hatch	---	reduced ceiling height
ffzs	fridge freezer space		

The illustrations shown are computer generated impressions of how the property may look and are indicative only. External details or finishes may vary on individual plots and homes may be built in either detached or attached styles depending on the development layout. Exact specifications, window styles and whether a property is left or righthanded may differ from plot to plot. Please speak to our sales consultant for specific plot details.

The floorplan has been produced for illustrative purposes only. Room sizes shown are between arrow points as indicated on plan. The dimensions have tolerances of + or - 50mm and should not be used other than for general guidance. If specific dimensions are required, enquiries should be made to the sales consultant. The floor plans shown are not to scale. Measurements are based on the original drawings. Slight variations may occur during construction.

08.23

Linden
HOMES



The Kempthorne

4 bedroom home

Lyneham Fields

South View, Lyneham, Wiltshire SN15 4PG | 01249 510 095

lindenhomes.co.uk

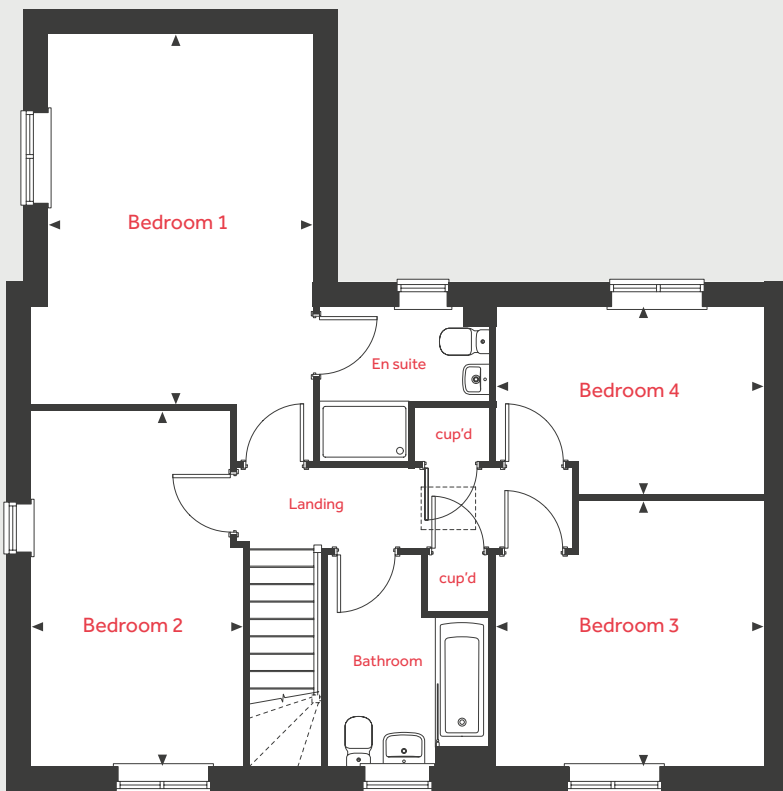
Linden
HOMES

The Kempthorne

4 bedroom home

Homes 2, 4, 7, 24, 28, 35, 49

First Floor



Ground Floor

Kitchen / Dining area

5.61m x 3.50m 18'5" x 11'6"

Living room

6.09m x 3.88m 20'0" x 12'9"

Dining room / Study

2.80m x 2.59m 9'2" x 8'6"

First Floor

Bedroom 1

4.90m x 3.50m 16'1" x 11'6"

Bedroom 2

4.70m x 2.80m 15'5" x 9'2"

Bedroom 3

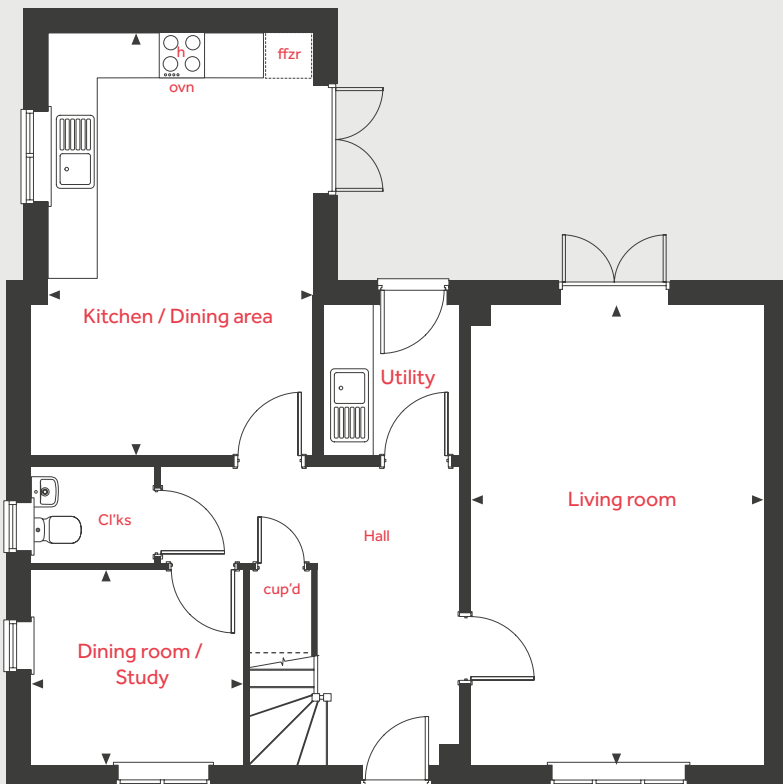
3.54m x 3.51m 11'7" x 11'6"

Bedroom 4

3.57m x 2.53m 11'7" x 8'2"

ovn	oven	cup'd	cupboard
h	hob	< >	measuring points
	loft hatch	---	reduced ceiling height
ffzr	fridge freezer		

Ground Floor



The illustrations shown are computer generated impressions of how the property may look and are indicative only. External details or finishes may vary on individual plots and homes may be built in either detached or attached styles depending on the development layout. Exact specifications, window styles and whether a property is left or righthanded may differ from plot to plot. Please speak to our sales consultant for specific plot details.

The floorplan has been produced for illustrative purposes only. Room sizes shown are between arrow points as indicated on plan. The dimensions have tolerances of + or -50mm and should not be used other than for general guidance. If specific dimensions are required, enquiries should be made to the sales consultant. The floor plans shown are not to scale. Measurements are based on the original drawings. Slight variations may occur during construction.

08.23

Linden
HOMES



The Kempthorne

4 bedroom home

Lyneham Fields

South View, Lyneham, Wiltshire SN15 4PG | 01249 510 095

lindenhomes.co.uk

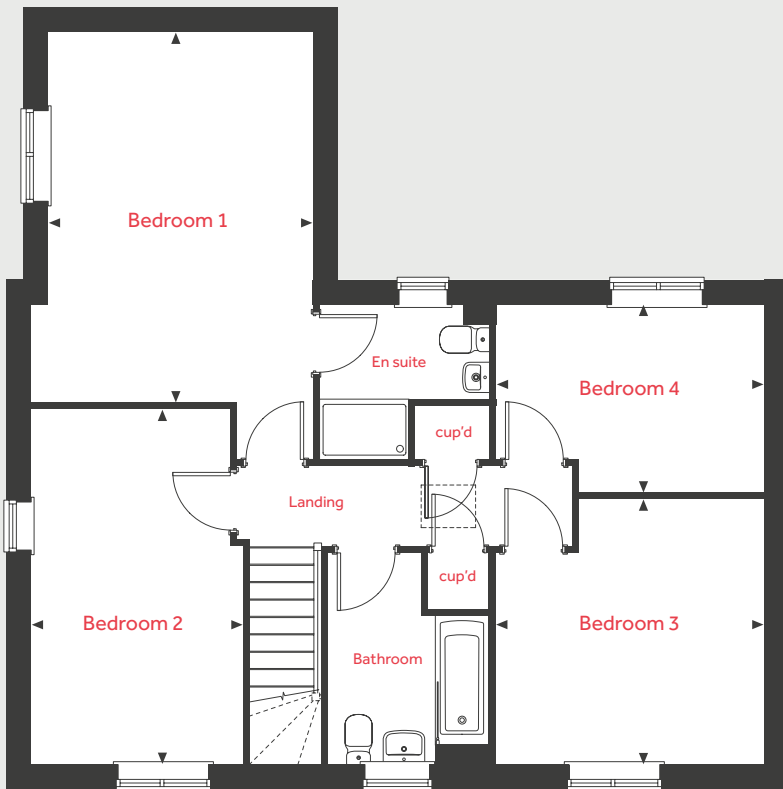
Linden
HOMES

The Kempthorne

4 bedroom home

Home 1

First Floor



Ground Floor

Kitchen / Dining area

5.61m x 3.50m 18'5" x 11'6"

Living room

6.09m x 3.88m 20'0" x 12'9"

Dining room / Study

2.80m x 2.59m 9'2" x 8'6"

First Floor

Bedroom 1

4.90m x 3.50m 16'1" x 11'6"

Bedroom 2

4.70m x 2.80m 15'5" x 9'2"

Bedroom 3

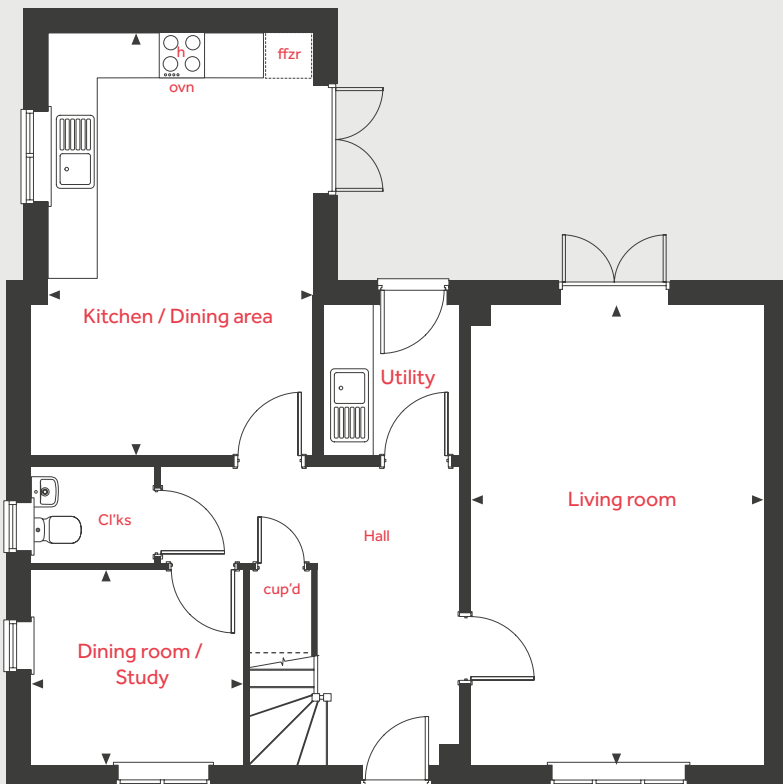
3.54m x 3.51m 11'7" x 11'6"

Bedroom 4

3.57m x 2.53m 11'7" x 8'2"

ovn	oven	cup'd	cupboard
h	hob	< >	measuring points
	loft hatch	- - -	reduced ceiling height
ffzr	fridge freezer		

Ground Floor



The illustrations shown are computer generated impressions of how the property may look and are indicative only. External details or finishes may vary on individual plots and homes may be built in either detached or attached styles depending on the development layout. Exact specifications, window styles and whether a property is left or righthanded may differ from plot to plot. Please speak to our sales consultant for specific plot details.

The floorplan has been produced for illustrative purposes only. Room sizes shown are between arrow points as indicated on plan. The dimensions have tolerances of + or -50mm and should not be used other than for general guidance. If specific dimensions are required, enquiries should be made to the sales consultant. The floor plans shown are not to scale. Measurements are based on the original drawings. Slight variations may occur during construction.

08.23

Linden
HOMES



The Mylne

4 bedroom home

Lyneham Fields

South View, Lyneham, Wiltshire SN15 4PG | 01249 510 095

lindenhomes.co.uk

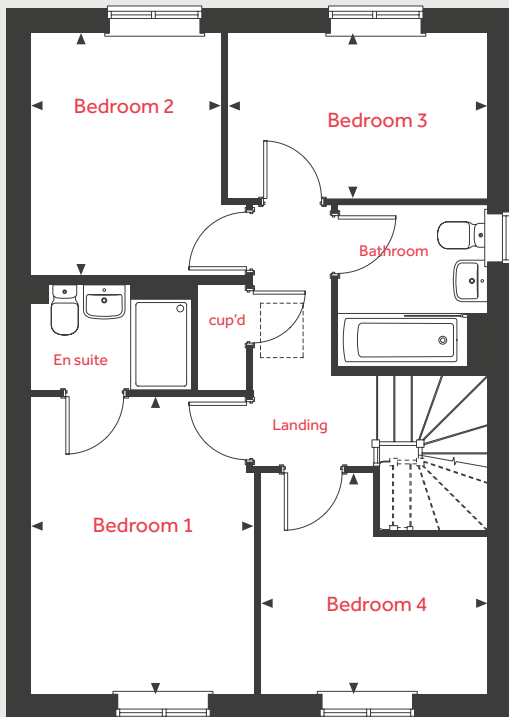
Linden
HOMES

The Mylne

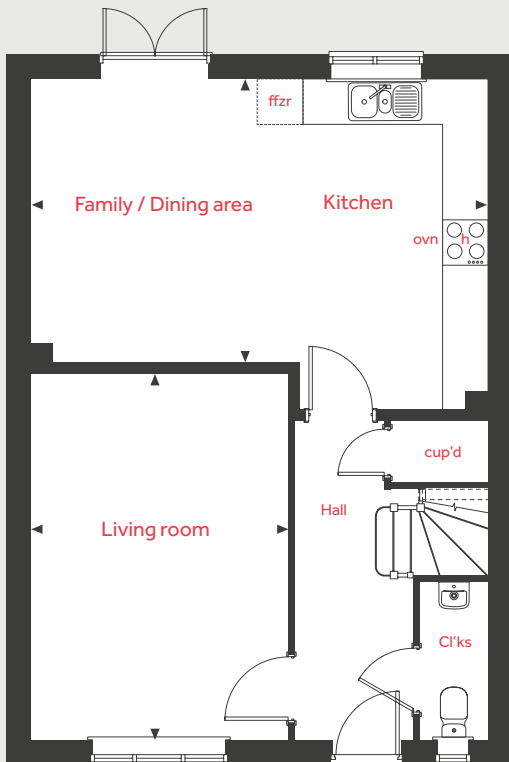
4 bedroom home

Homes 25, 27, 33

First Floor



Ground Floor



Ground Floor

Kitchen / Family / Dining area

6.04m x 3.76m 19'10" x 12'4"

Living room

4.84m x 3.40m 15'10" x 11'2"

First Floor

Bedroom 1

3.94m x 2.95m 12'11" x 9'8"

Bedroom 2

3.21m x 2.52m 10'6" x 8'3"

Bedroom 3

3.43m x 2.19m 11'3" x 7'2"

Bedroom 4

3.00m x 2.09m 9'10" x 6'10"

ovn	oven	cup'd	cupboard
h	hob	< >	measuring points
ffzr	loft hatch	---	reduced ceiling height
	ffzr		fridge freezer

The illustrations shown are computer generated impressions of how the property may look and are indicative only. External details or finishes may vary on individual plots and homes may be built in either detached or attached styles depending on the development layout. Exact specifications, window styles and whether a property is left or righthanded may differ from plot to plot. Please speak to our sales consultant for specific plot details.

The floorplan has been produced for illustrative purposes only. Room sizes shown are between arrow points as indicated on plan. The dimensions have tolerances of + or -50mm and should not be used other than for general guidance. If specific dimensions are required, enquiries should be made to the sales consultant. The floor plans shown are not to scale. Measurements are based on the original drawings. Slight variations may occur during construction.

08.23

Linden
HOMES



The Pembroke

4 bedroom home

Lyneham Fields

South View, Lyneham, Wiltshire SN15 4PG | 01249 510 095

lindenhomes.co.uk

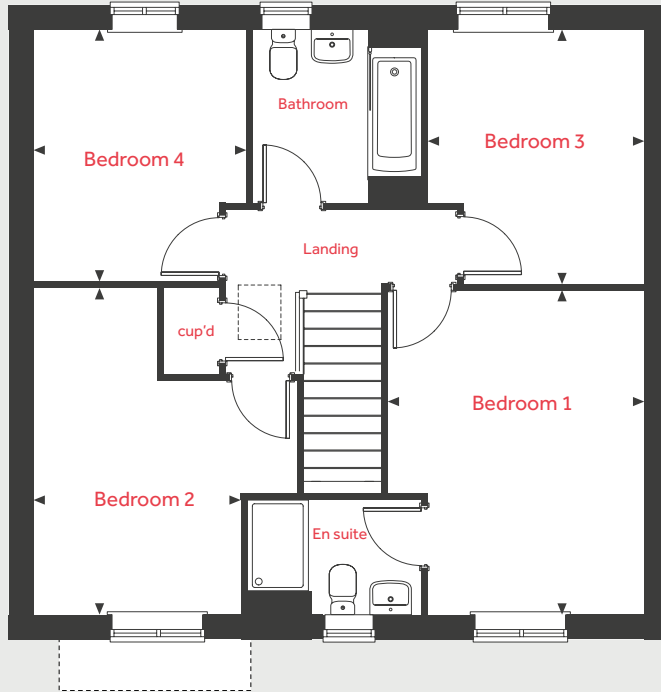
Linden
HOMES

The Pembroke

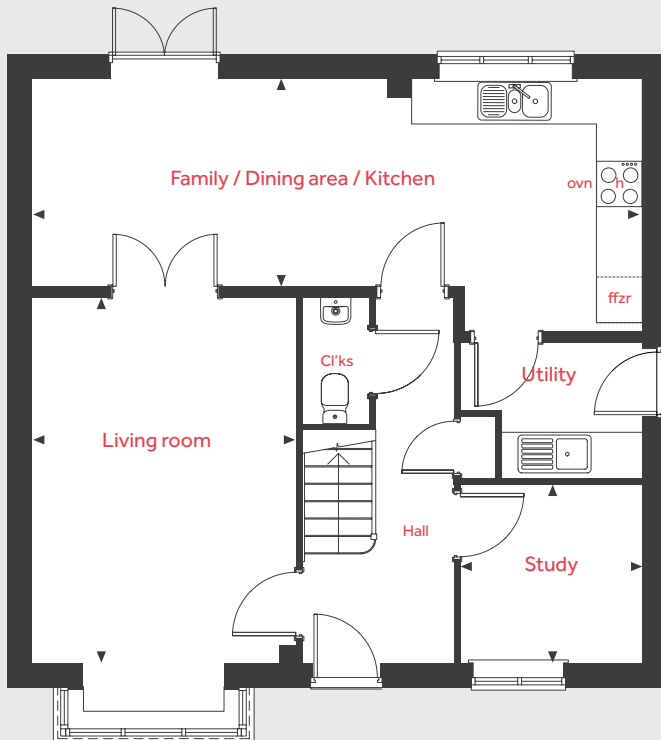
4 bedroom home

Homes 3, 5, 6, 26, 29, 30, 32, 34

First Floor



Ground Floor



Ground Floor

Family / Dining area / Kitchen

8.07m x 2.75m 26'6" x 9'0"

Living room

4.83m x 3.49m 15'10" x 11'5"

Study

2.40m x 2.36m 7'11" x 7'9"

First Floor

Bedroom 1

4.28m x 3.39m 14'1" x 11'1"

Bedroom 2

4.31m x 2.74m 14'2" x 9'0"

Bedroom 3

3.36m x 2.87m 11'0" x 9'5"

Bedroom 4

3.33m x 2.81m 10'11" x 9'3"

ovn	oven	cup'd	cupboard
h	hob	< >	measuring points
ffzr	loft hatch	---	reduced ceiling height
	ffzr		fridge freezer

The illustrations shown are computer generated impressions of how the property may look and are indicative only. External details or finishes may vary on individual plots and homes may be built in either detached or attached styles depending on the development layout. Exact specifications, window styles and whether a property is left or righthanded may differ from plot to plot. Please speak to our sales consultant for specific plot details.

The floorplan has been produced for illustrative purposes only. Room sizes shown are between arrow points as indicated on plan. The dimensions have tolerances of + or - 50mm and should not be used other than for general guidance. If specific dimensions are required, enquiries should be made to the sales consultant. The floor plans shown are not to scale. Measurements are based on the original drawings. Slight variations may occur during construction.

08.23

Linden
HOMES