



26 Holdenby Drive  
Corby NN17 5EH  
**£345,000**





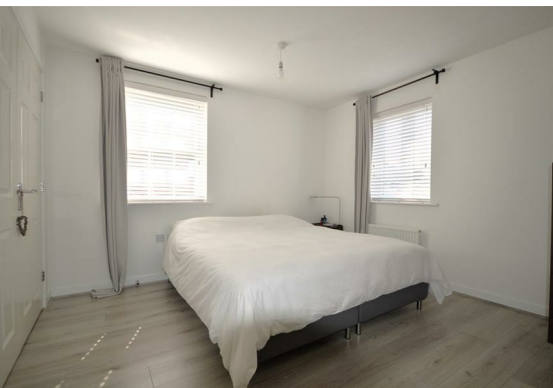
## 26 Holdenby Drive

Corby NN17 5EH

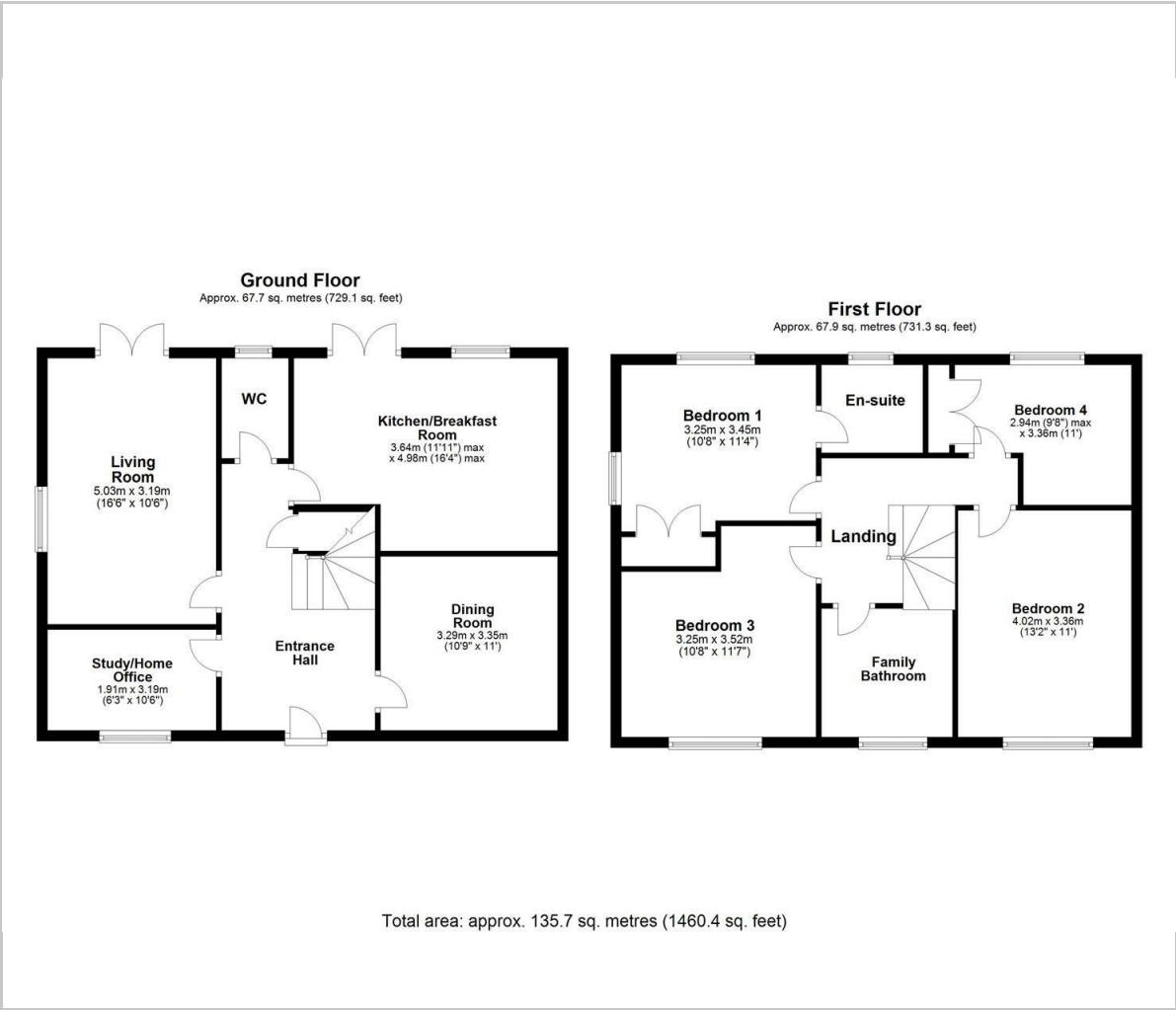
Epic Proportions! Situated on the sought after Priors Hall Park development, this spacious detached property boasts 3 reception rooms and 4 double bedrooms and is ideally positioned within a 'stones-throw' of the local schools, shops and play areas. Offering fabulous family friendly accommodation throughout, expect to be impressed by the stunning entrance hall, superb contemporary kitchen/breakfast room, light and airy living room, separate dining room and further study/home office. Upstairs, the generous landing leads to four good sized bedrooms, the main bedroom benefitting from fitted wardrobes and an en-suite shower room, whilst a contemporary family bathroom also awaits. Outside, a paved patio leads to an enclosed lawned garden, whilst a driveway providing off road parking for several vehicles leads to a garage. Further benefits include double glazing throughout and gas radiator central heating complete with a **BRAND NEW BOILER!** A full internal inspection is a must in order to appreciate the space and the flexibility that this home has to offer. Call PRIORS now, for your viewing.







Floor Plan



Viewing

Please contact our Priors Estate Agents Office on 07721396411 if you wish to arrange a viewing appointment for this property or require further information.

These particulars, whilst believed to be accurate are set out as a general outline only for guidance and do not constitute any part of an offer or contract. Intending purchasers should not rely on them as statements of representation of fact, but must satisfy themselves by inspection or otherwise as to their accuracy. No person in this firms employment has the authority to make or give any representation or warranty in respect of the property.

Corby Enterprise Centre London Road, Corby, Northants, NN17 5EU  
Tel: 07721396411 Email: [simon@priorsestateagents.co.uk](mailto:simon@priorsestateagents.co.uk) [priorsestateagents.co.uk](http://priorsestateagents.co.uk)

Area Map



Energy Efficiency Graph

