



16 Silvester Road
Weldon, Corby NN17 3LZ

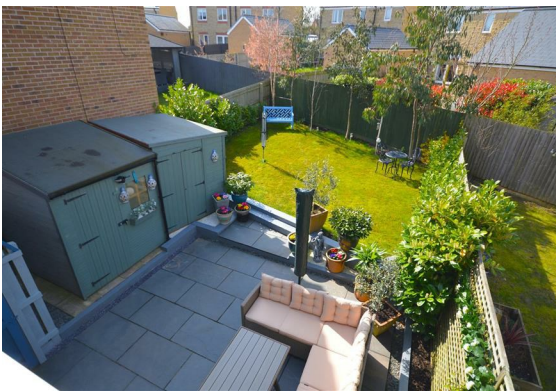
£260,000



16 Silvester Road

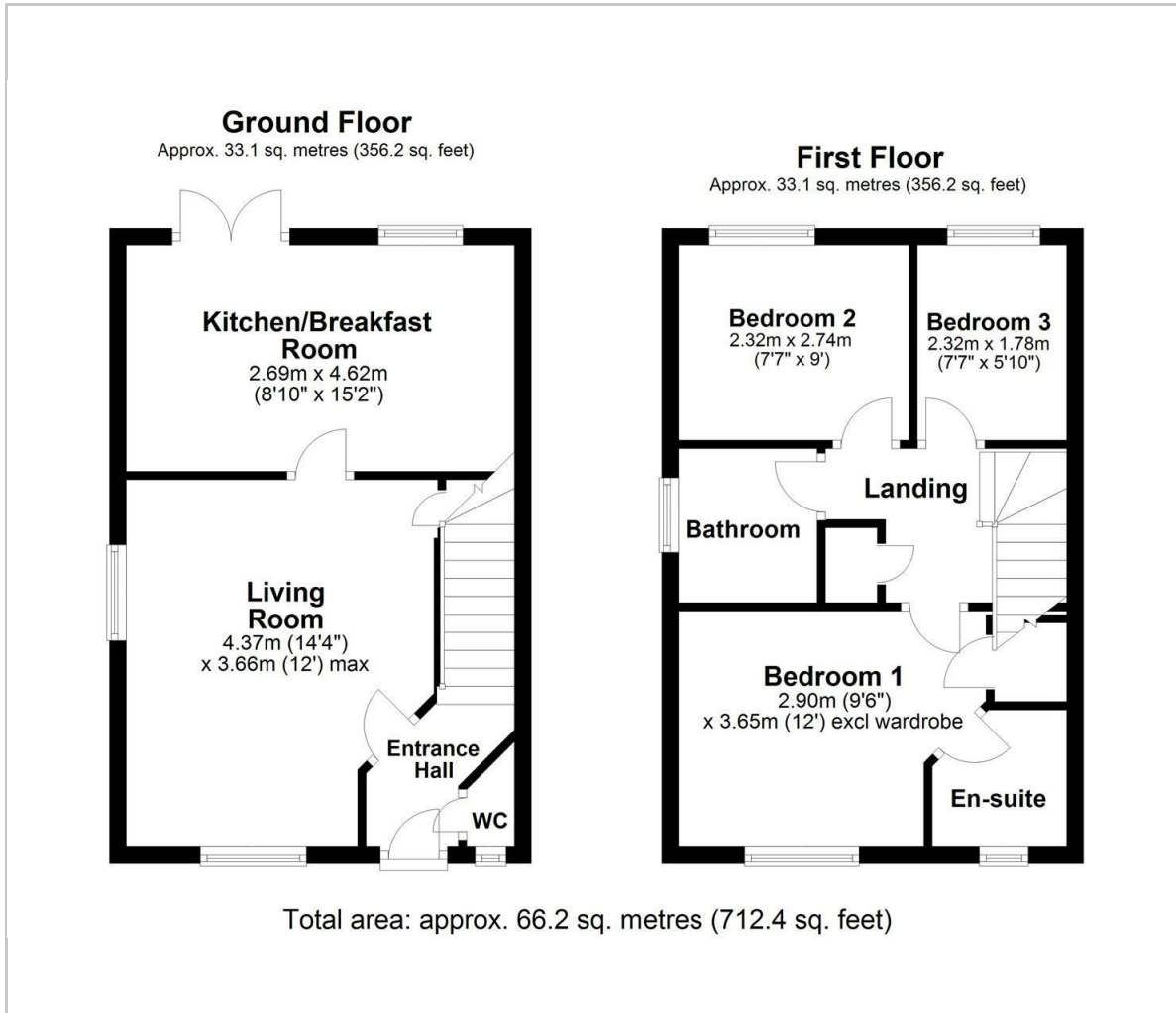
Weldon, Corby NN17 3LZ

Pick Of The Plots! This outstanding semi detached property is situated on a superb corner plot on the Weldon Park development and must be seen to be appreciated. Features include a light and airy living room, fabulous and much improved kitchen/breakfast room and a downstairs WC. Upstairs offers three bedrooms with a contemporary en-suite to the principal bedroom and further fitted family bathroom. What sets this property apart is the spacious private driveway to the side and the generous rear gardens that have been superbly levelled and landscaped providing a wonderful paved entertaining space, lawn and two sheds to give that all important storage space. Prepare to be wowed !





Floor Plan



Viewing

Please contact our Priors Estate Agents Office on 07721396411 if you wish to arrange a viewing appointment for this property or require further information.

These particulars, whilst believed to be accurate are set out as a general outline only for guidance and do not constitute any part of an offer or contract. Intending purchasers should not rely on them as statements of representation of fact, but must satisfy themselves by inspection or otherwise as to their accuracy. No person in this firm's employment has the authority to make or give any representation or warranty in respect of the property.

Corby Enterprise Centre London Road, Corby, Northants, NN17 5EU
 Tel: 07721396411 Email: simon@priorsestateagents.co.uk priorsestateagents.co.uk

Area Map



Energy Efficiency Graph

