



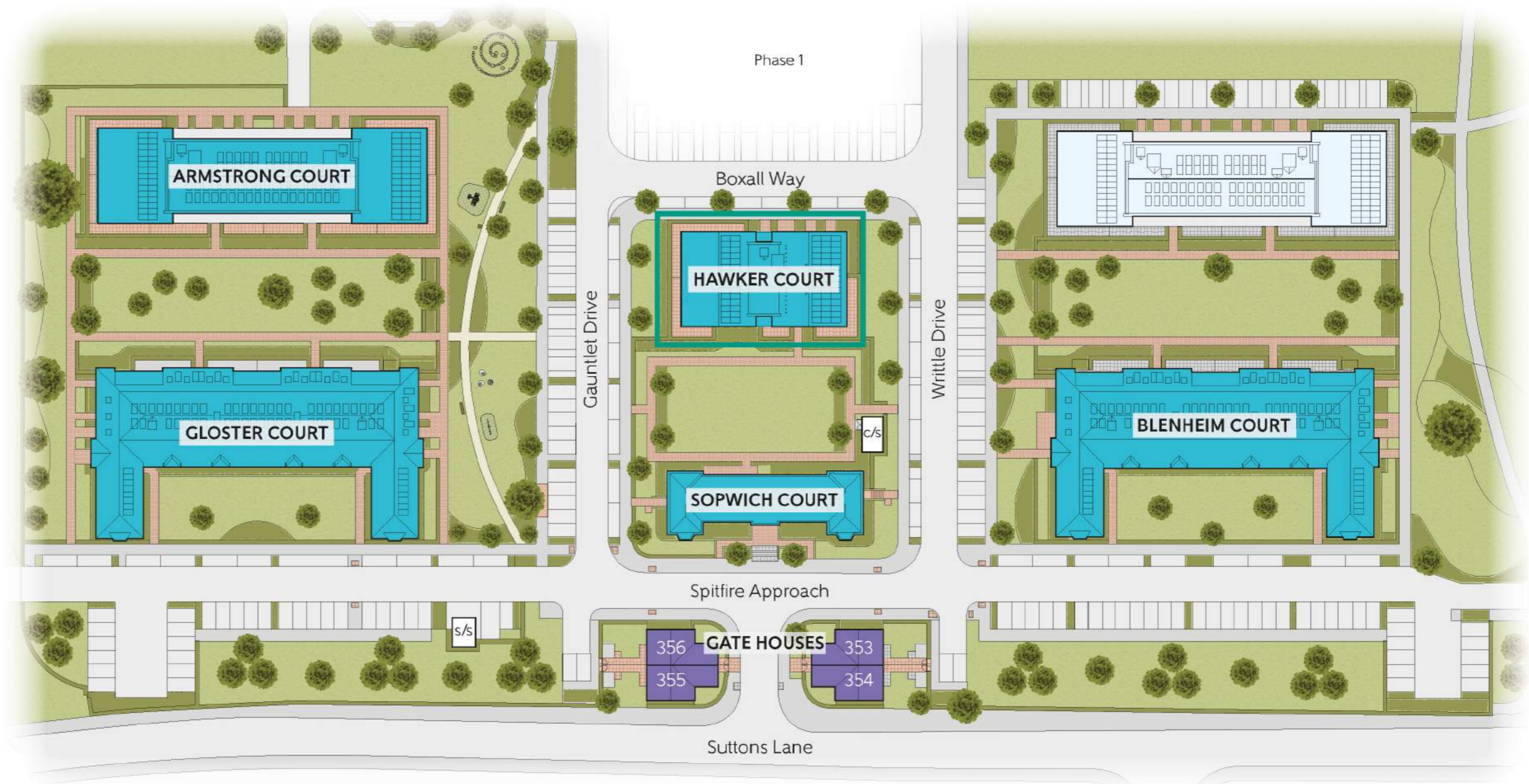
St George's Park

Hornchurch

HAWKER COURT FLOOR PLANS

1 AND 2 BEDROOM APARTMENTS
PLOTS 269-286






St George's Park
 Hornchurch
DEVELOPMENT PLAN

DEVELOPMENT PLAN

- Blenheim Court: 1 & 2 Bedroom Apartments
plots 195-224
- Sopwich Court: 1 & 2 Bedroom Apartments (Refurbished)
plots 261-268
- Hawker Court: 1 & 2 Bedroom Apartments
plots 269-286
- Gloster Court: 1 & 2 Bedroom Apartments
plots 287-316
- Armstrong Court: 1 & 2 Bedroom Apartments
plots 317-352
- The Gatehouses: 3 Bedroom Homes
plots 353-356
- Affordable Homes

The site plan is drawn to show the relative position of individual properties. Not to scale. These are drawings and will not show land contours and gradients, boundary treatments, landscaping or local authority street lighting. Footpaths subject to change. For details of individual properties and availability please refer to our Sales Advisor. Hard and soft landscaping is indicative only.

HAWKER COURT

GROUND FLOOR

PLOT 269 THE DANDELION

Kitchen/Living/ Dining Room	7.905m x 3.121m	25'11" x 10'3"
Bedroom	4.145m x 3.840m	13'7" x 12'7"
Total area	57.7 sq.m.	621 sq.ft.

PLOT 270 THE DAISY (WCH)

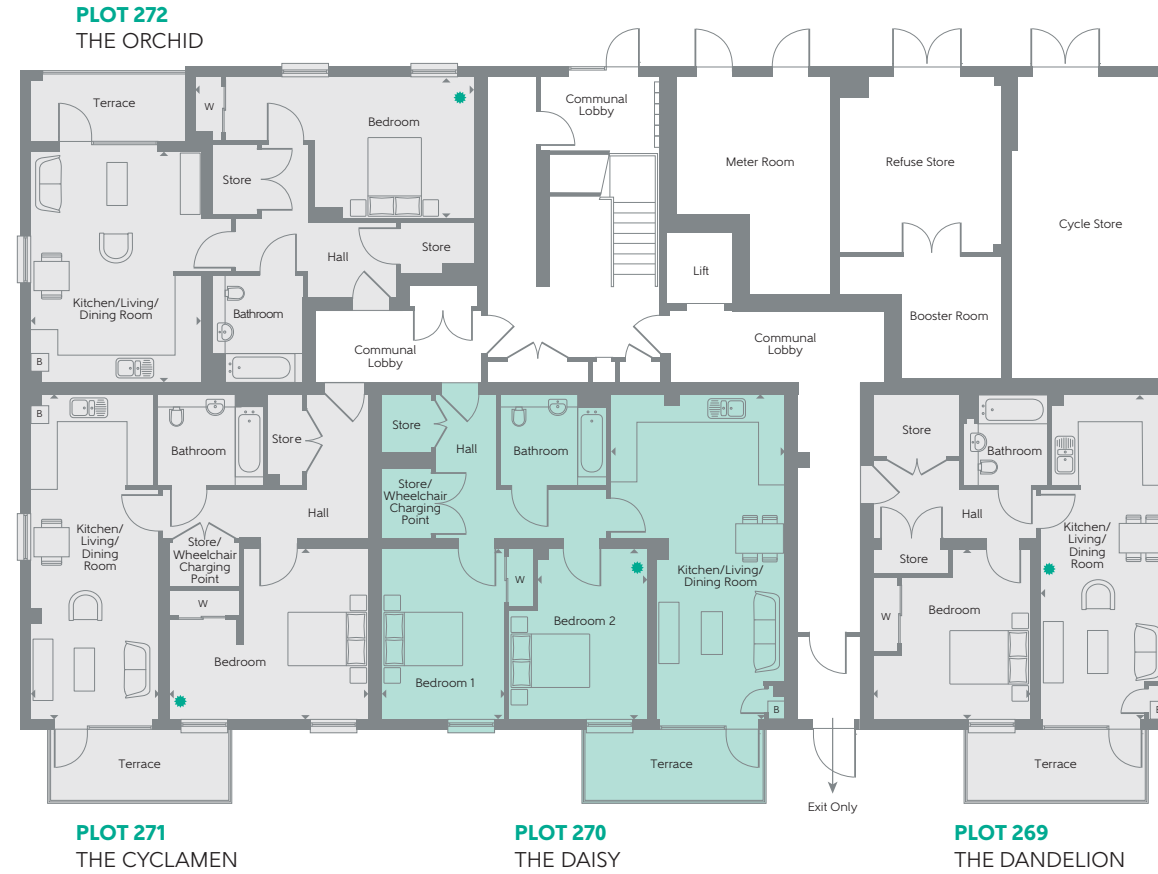
Kitchen/Living/ Dining Room	7.905m x 4.263m	25'11" x 14'0"
Bedroom 1	4.145m x 3.000m	13'7" x 9'10"
Bedroom 2	4.145m x 2.676m	13'7" x 8'9"
Total area	78.5 sq.m.	845 sq.ft.

PLOT 271 THE CYCLAMEN (WCH)

Kitchen/Living/ Dining Room	7.905m x 3.121m	25'11" x 10'3"
Bedroom	4.864m x 4.145m	15'11" x 13'7"
Total area	65.8 sq.m.	708 sq.ft.

PLOT 272 THE ORCHID (WCH)

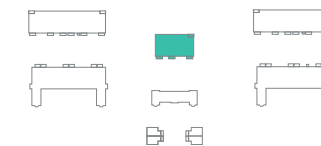
Kitchen/Living/ Dining Room	5.625m x 4.170m	18'5" x 13'8"
Bedroom	6.775m x 3.435m	22'3" x 11'3"
Total area	64.0 sq.m.	688 sq.ft.



Some items shown in this key may be subject to change, and positions could vary from those indicated on this floorplan. Please refer to Sales Advisor for details of your selected plot. External finishes, landscaping and configuration may vary from plot to plot. Please refer to Sales Advisor for further details. All dimensions are approximate and should not be used for carpet sizes, appliance spaces or furniture. Furniture not to scale and all positions are indicative. **Kitchen layouts are subject to change.** We operate a policy of continuous improvement and individual features such as kitchen and bathroom layouts, doors, windows, garages and elevational treatments may vary from time to time. Consequently these particulars should be treated as general guidance only and do not constitute a contract, part of a contract or a warranty.



Front Elevation



Ground Floor

KEY

- 1 Bedroom
- 2 Bedroom
- Fitted Wardrobe
- Boiler
- Indicates where dimensions are taken from
- Suggested working from home area with USB socket
- WCH Wheelchair Adaptable

HAWKER COURT

FIRST & SECOND FLOORS

PLOTS 273, 274, 278 & 279 THE POPPY

Kitchen/Living/ Dining Room	7.905m x 3.121m	25'11" x 10'3"
Bedroom 1	4.145m x 2.795m	13'7" x 9'2"
Bedroom 2	4.145m x 2.775m	13'7" x 9'1"
Total area	72.2 sq.m.	777 sq.ft.

PLOTS 275 & 280 THE PEONY

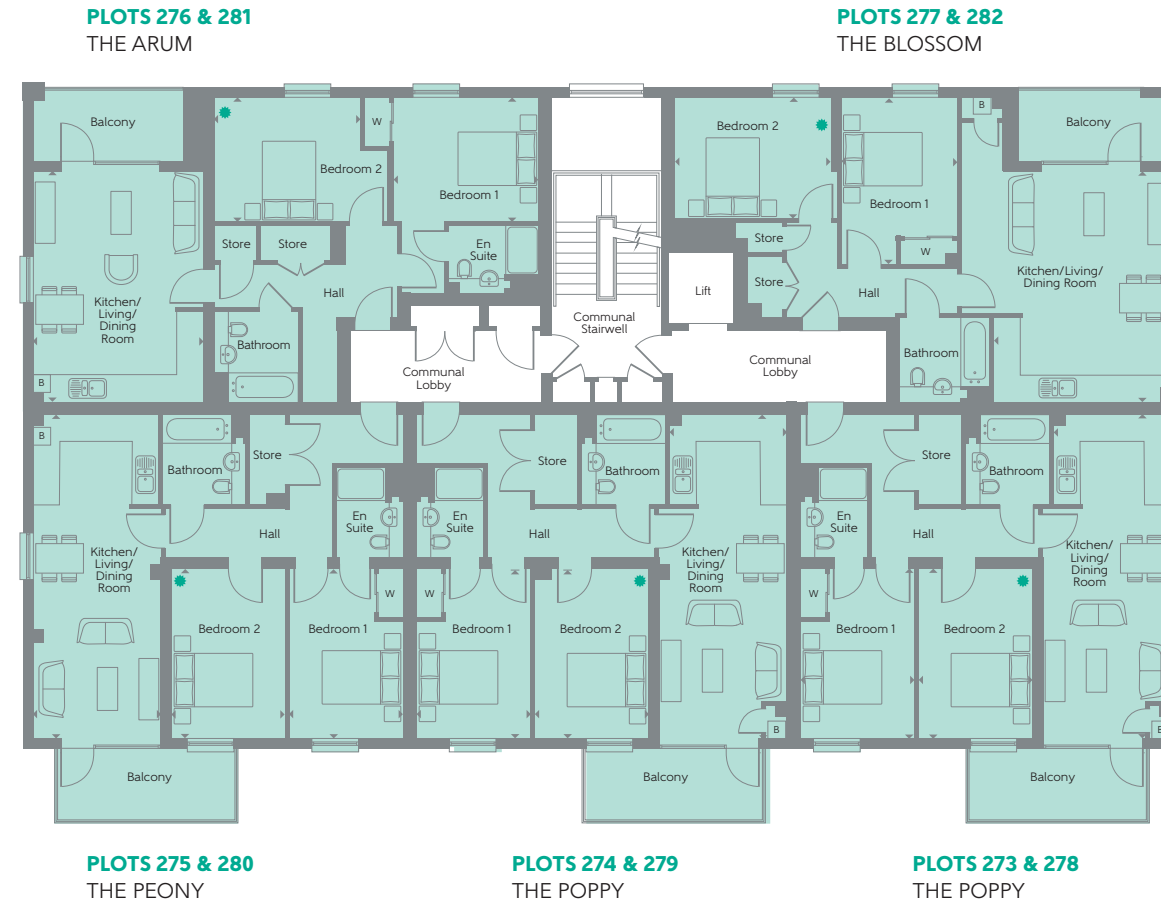
Kitchen/Living/ Dining Room	7.905m x 3.121m	25'11" x 10'3"
Bedroom 1	4.145m x 2.795m	13'7" x 9'2"
Bedroom 2	4.145m x 2.775m	13'7" x 9'1"
Total area	72.2 sq.m.	777 sq.ft.

PLOTS 276 & 281 THE ARUM

Kitchen/Living/ Dining Room	5.625m x 4.170m	18'5" x 13'8"
Bedroom 1	3.550m x 3.030m	11'8" x 9'11"
Bedroom 2	3.960m x 3.040m	13'0" x 10'0"
Total area	72.9 sq.m.	785 sq.ft.

PLOTS 277 & 282 THE BLOSSOM

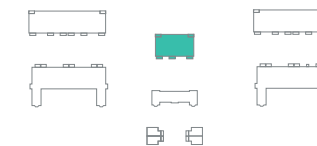
Kitchen/Living/ Dining Room	5.625m x 4.331m	18'5" x 14'3"
Bedroom 1	4.080m x 2.820m	13'5" x 9'3"
Bedroom 2	3.821m x 2.960m	12'6" x 9'9"
Total area	68.5 sq.m.	737 sq.ft.



Some items shown in this key may be subject to change, and positions could vary from those indicated on this floorplan. Please refer to Sales Advisor for details of your selected plot. External finishes, landscaping and configuration may vary from plot to plot. Please refer to Sales Advisor for further details. All dimensions are approximate and should not be used for carpet sizes, appliance spaces or furniture. Furniture not to scale and all positions are indicative. **Kitchen layouts are subject to change.** We operate a policy of continuous improvement and individual features such as kitchen and bathroom layouts, doors, windows, garages and elevational treatments may vary from time to time. Consequently these particulars should be treated as general guidance only and do not constitute a contract, part of a contract or a warranty.



Front Elevation



First & Second Floors

KEY

- 2 Bedroom
- Fitted Wardrobe
- Boiler
- Indicates where dimensions are taken from
- Suggested working from home area with USB socket

HAWKER COURT

THIRD FLOOR

PLOT 283 THE VIOLET

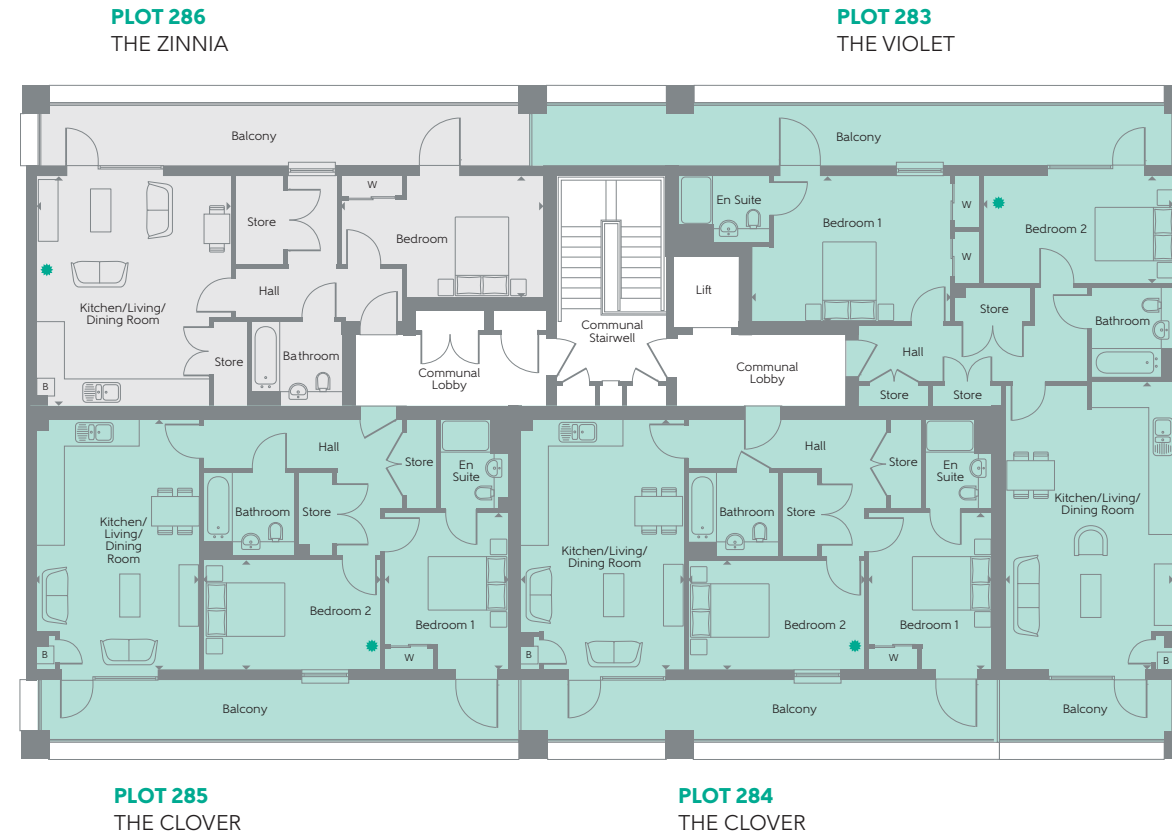
Kitchen/Living/ Dining Room	7.035m x 4.150m	23'1" x 13'7"
Bedroom 1	4.845m x 3.575m	15'11" x 11'9"
Bedroom 2	4.703m x 2.630m	15'5" x 8'8"
Total area	83.0 sq.m.	893 sq.ft.

PLOTS 284 & 285 THE CLOVER

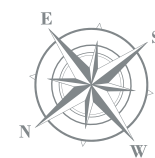
Kitchen/Living/ Dining Room	6.105m x 3.971m	20'0" x 13'0"
Bedroom 1	3.810m x 3.025m	12'6" x 9'11"
Bedroom 2	4.315m x 2.665m	14'2" x 8'9"
Total area	70.8 sq.m.	762 sq.ft.

PLOT 286 THE ZINNIA

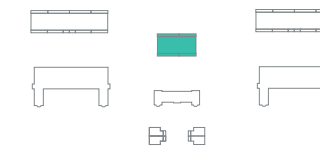
Kitchen/Living/ Dining Room	5.625m x 4.733m	18'5" x 15'6"
Bedroom	4.932m x 2.975m	16'2" x 9'9"
Total area	57.9 sq.m.	623 sq.ft.



Some items shown in this key may be subject to change, and positions could vary from those indicated on this floorplan. Please refer to Sales Advisor for details of your selected plot. External finishes, landscaping and configuration may vary from plot to plot. Please refer to Sales Advisor for further details. All dimensions are approximate and should not be used for carpet sizes, appliance spaces or furniture. Furniture not to scale and all positions are indicative. **Kitchen layouts are subject to change.** We operate a policy of continuous improvement and individual features such as kitchen and bathroom layouts, doors, windows, garages and elevational treatments may vary from time to time. Consequently these particulars should be treated as general guidance only and do not constitute a contract, part of a contract or a warranty.



Front Elevation



Third Floor

KEY

- 1 Bedroom
- 2 Bedroom
- Fitted Wardrobe
- Boiler
- Indicates where dimensions are taken from
- Suggested working from home area with USB socket



THE LIVING SPACE

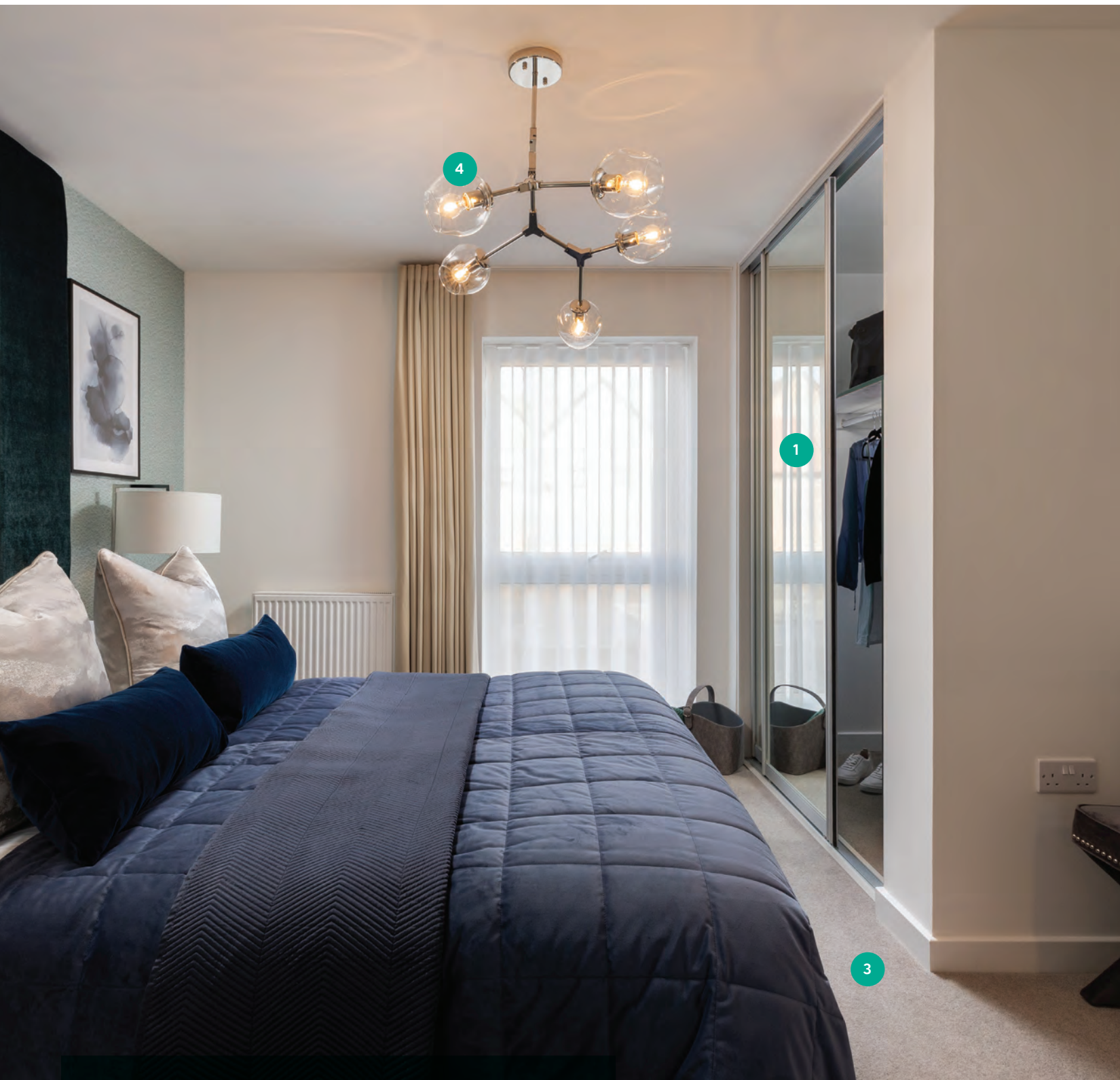
- 1 | Walls and ceilings finished in white
- 2 | Laminate wood flooring
- 3 | Pencil rounded skirting
- 4 | Media plate to living room with Sky Q/Sky+ HD (connection to Sky to be arranged by purchaser via satellite dish)
- 5 | Lower energy downlights to living area with dimmer switch
- 6 | Mains linked smoke detector
- 7 | uPVC French doors and windows
- 8 | Video door entry system



THE KITCHEN

- 1 | Soft close doors and drawers
- 2 | Handle-less wall units
- 3 | Integrated oven (typically in tall housing unit where space permits)
- 4 | Glass splashback with ceramic hob and telescopic extractor hood
- 5 | Integrated fridge/freezer
- 6 | Removable cupboard with space for a dishwasher and microwave where possible
- 7 | Feature LED lighting
- 8 | Satin chrome sockets and switches

All appliances come complete with manufacturer warranties for your peace of mind.



THE BEDROOMS

- 1 | Fitted wardrobes to bedroom 1
- 2 | BT socket and TV/data point to bedroom 1
- 3 | Cormar Oaklands carpets to all bedrooms
- 4 | Energy efficient pendant lighting to all bedrooms



THE BATHROOM AND EN SUITE

- 1 | White Roca sanitaryware
- 2 | Chrome Bristan fittings
- 3 | Soft close WC with concealed cistern
- 4 | Dual chrome flush
- 5 | Fully ceramic tiled walls around bath/shower (half tiled to remaining walls)
- 6 | Ceramic tiles to floor
- 7 | Armarii slot-in shelving
- 8 | Mira thermostatic shower
- 9 | Heated chrome towel rail
- 10 | Mirror

