

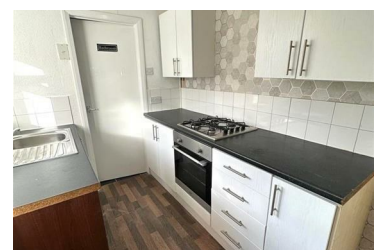


28 Station Avenue South, Houghton Le Spring, DH4 6HN

£65,000



FULL OF POTENTIAL... this three bedroom terrace property could be a great family home! The spacious accommodation briefly comprises: Entrance door to hallway, large lounge and dining room, fitted kitchen, bathroom with white suite, stairs to first floor landing provide access to three good size bedrooms. Externally there is an enclosed yard to the rear. Additional benefits include: Gas central heating, double glazing and no chain.



- Three Bedroom Terrace House
- Gas Central Heating
- Fitted Kitchen & Bathroom
- IN NEED OF REFURBISHMENT
- Double Glazing
- Spacious Lounge & Dining Room
- No Chain