



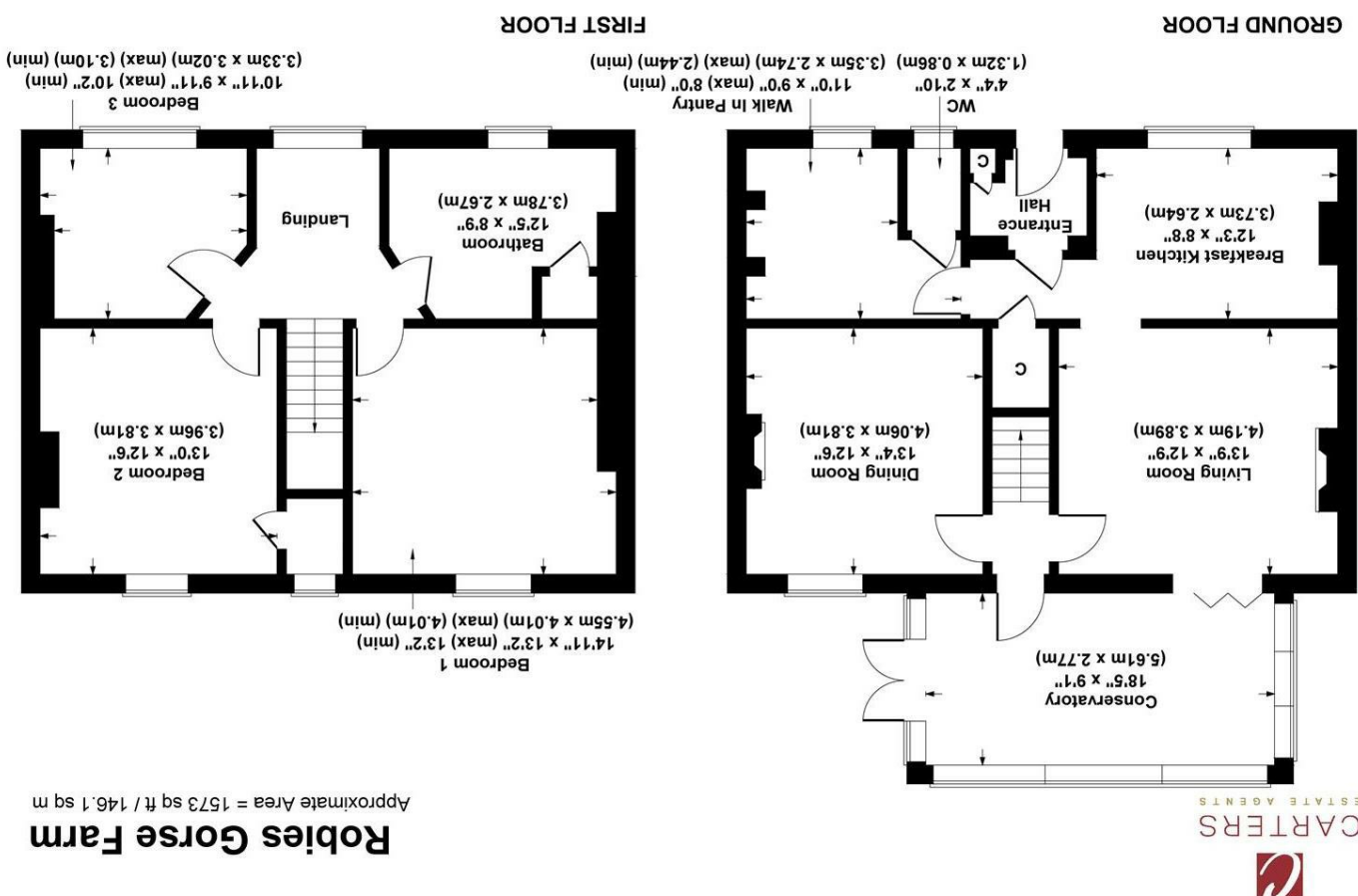
Robies Gorse Farmhouse Robies Gorse Farm, Bosworth Road
Nuneaton, CV13 0BL

£649,950



COUNCIL TAX BAND

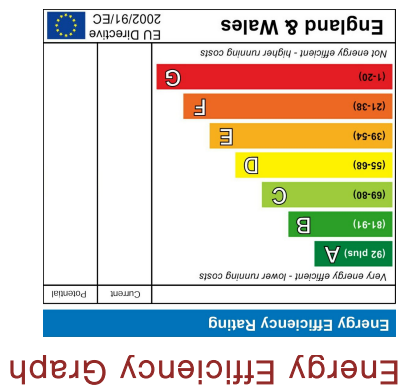
Floor Plan



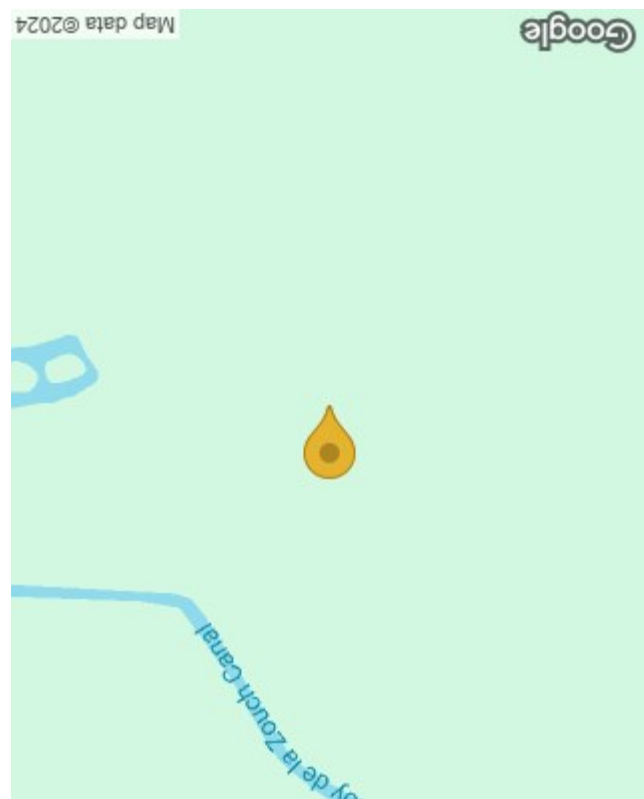
Not to Scale. Produced by The Plan Portal 2024
For Illustrative Purposes Only.

Please contact our Atherstone Office on 01827 215 100
if you wish to arrange a viewing appointment for this property or require further information.

These particulars, whilst believed to be accurate are set out as a general outline only for guidance and do not constitute any part of an offer or contract. Intending purchasers should not rely on them as statements of representation of fact, but must satisfy themselves by inspection or otherwise as to their accuracy. No person in this firm's employment has the authority to make or give any representation or warranty in respect of the property.



Energy Efficiency Graph



Area Map

Robies Gorse Farmhouse Robie
Nuneaton, CV13 0BL

Nestled on the outskirts of the picturesque village of Congerstone, this charming double-fronted farmhouse exudes timeless elegance and offers panoramic views of the Leicestershire countryside. Tucked away from the bustle of daily life, the property is accessed via a private lane leading exclusively to two residences.

Positioned just a mile from the village pub and a short drive from Market Bosworth, this farmhouse offers the perfect blend of tranquillity and convenience. Its secluded location ensures a high level of privacy, allowing residents to enjoy the serene countryside surroundings. Yet, with amenities and dining options within easy reach, the property offers both seclusion and accessibility, making it an ideal retreat for those seeking a balanced lifestyle.

Having undergone a comprehensive modernisation by the current owners, this farmhouse epitomises contemporary living while retaining its traditional charm. The interior welcomes you through a porch into a hallway, leading to the front-facing breakfast kitchen. Featuring integrated appliances and ample dining space, this area is ideal for culinary enthusiasts. A convenient walk-in pantry and guest cloakroom/WC complete the



ground floor layout.

The living room, situated at the rear, boasts a multi-fuel burner and bi-fold doors opening onto a captivating conservatory, offering breath-taking countryside vistas. An additional reception room, currently serving as a dining area, provides versatility and comfort.

Ascending the stairs to the first floor, you'll discover three spacious double bedrooms, two benefiting from rear-facing views and one showcasing stunning front-facing scenery. A generously sized family bathroom with a double walk-in shower unit completes the upper level. The expansive loft space presents an opportunity for conversion, subject to the necessary planning approvals.

