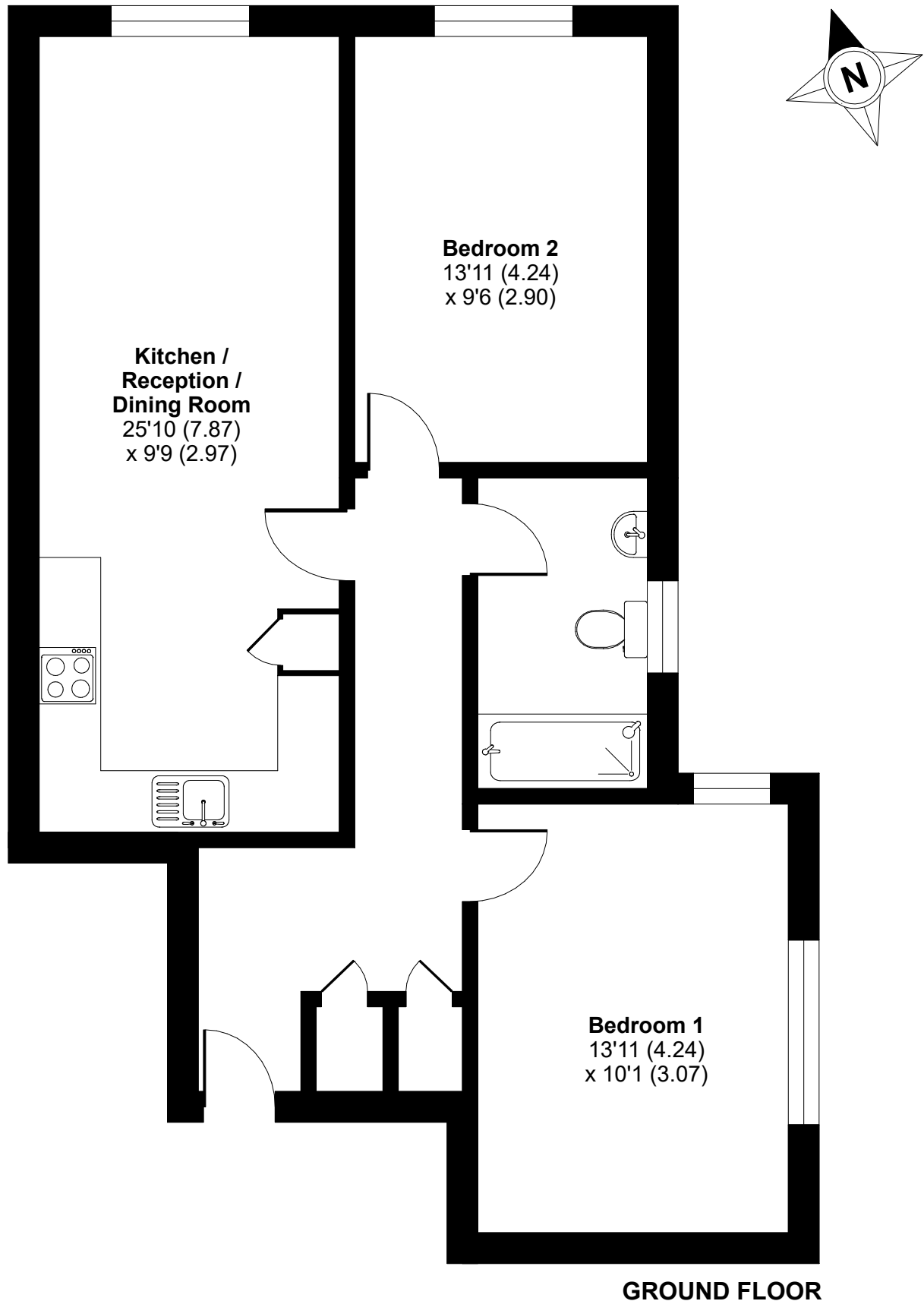


# Holden Road, London, N12

Approximate Area = 721 sq ft / 66.9 sq m

For identification only - Not to scale



Floor plan produced in accordance with RICS Property Measurement 2nd Edition, Incorporating International Property Measurement Standards (IPMS2 Residential). © n1cheom 2025. Produced for Red Loft Limited Liability Partnership. REF: 1257631

**redloft**