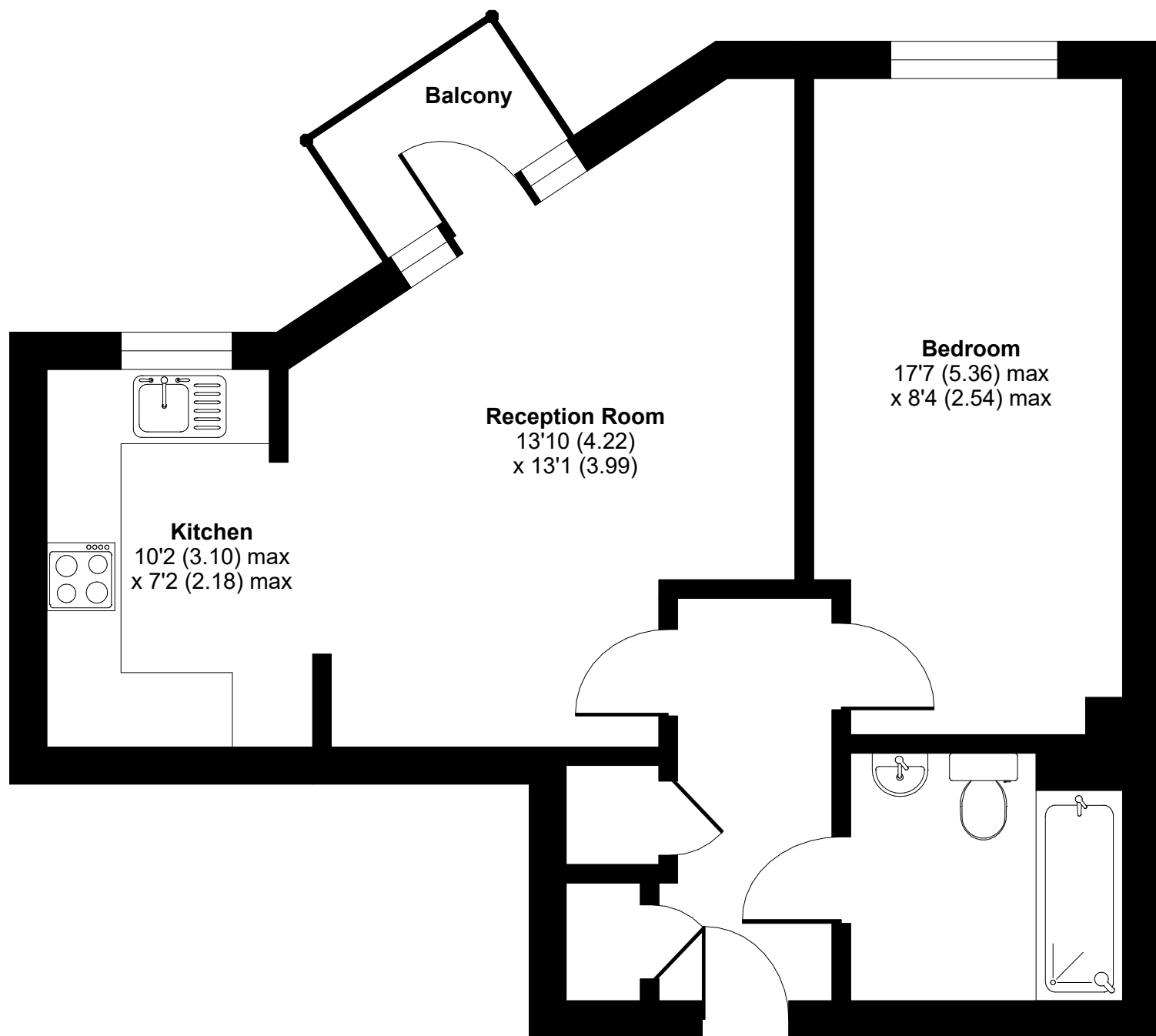
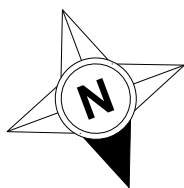


# Ainsworth Court, Plough Close, London, NW10

Approximate Area = 527 sq ft / 48.9 sq m

For identification only - Not to scale



**FOURTH FLOOR**



Floor plan produced in accordance with RICS Property Measurement 2nd Edition, Incorporating International Property Measurement Standards (IPMS2 Residential). © nitchecom 2025. Produced for Red Loft Limited Liability Partnership. REF: 1249263

**redloft**