

1b Ridge Road, Mitcham  
£600,000 Leasehold



haboodle



## Stylish, spacious and brilliantly located – welcome to Ridge Road.

This modern home offers an ideal blend of comfort, space and innovative design. Set in a quiet residential street, it features a private front garden and a light-filled interior that feels instantly inviting.

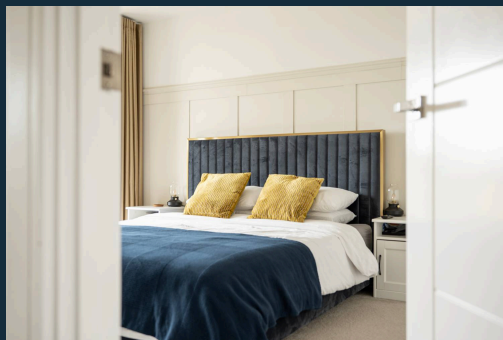
High ceilings and elegant Karndean flooring on the ground floor lead into a generous kitchen-diner, perfect for daily life and entertaining. The contemporary kitchen is thoughtfully laid out with ample storage and large windows that bring in plenty of natural light.

The sleek family bathroom includes a walk-in shower, bathtub, underfloor heating, and modern finishes. It also has a useful utility cupboard and a cleverly designed storage area under the stairs.

Upstairs, all three bedrooms are spacious doubles. The primary and second bedrooms have access to private balconies, while the second also includes built-in wardrobes. The living room is bright and airy, opening to

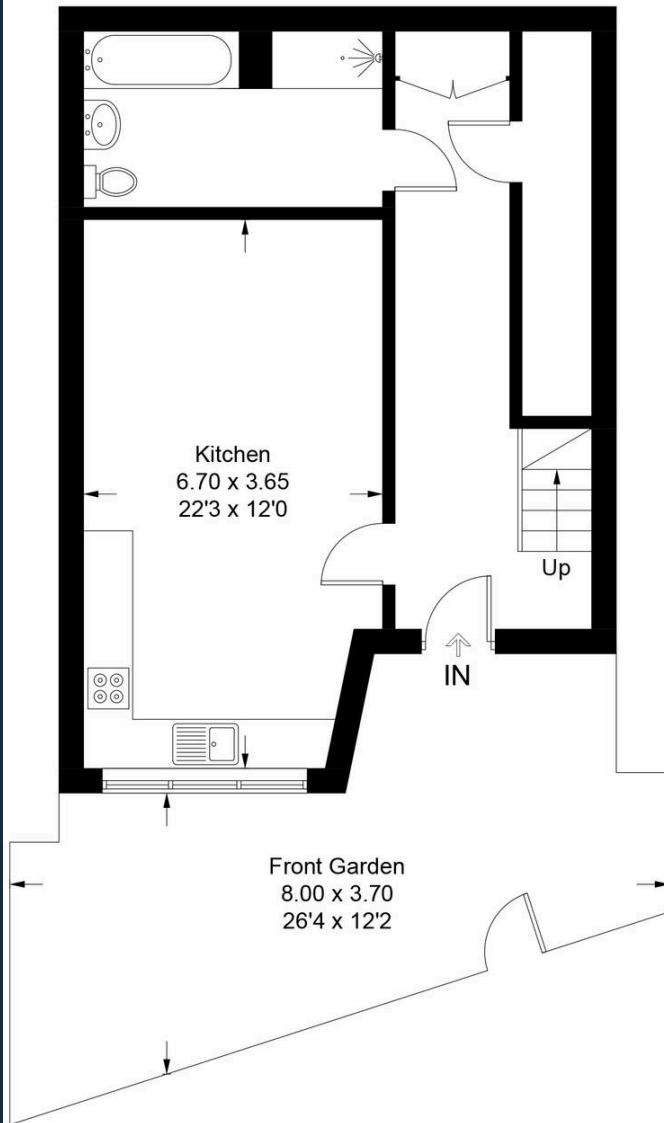


- Three spacious double bedrooms, two with private balcony access
- Bright and airy living room opening onto a rear terrace
- Stylish, contemporary kitchen-diner with ample storage
- High ceilings and Karndean flooring throughout the ground floor
- Modern family bathroom with walk-in shower, bathtub and underfloor heating
- Cleverly designed utility cupboard and large understairs storage
- Private front garden and access

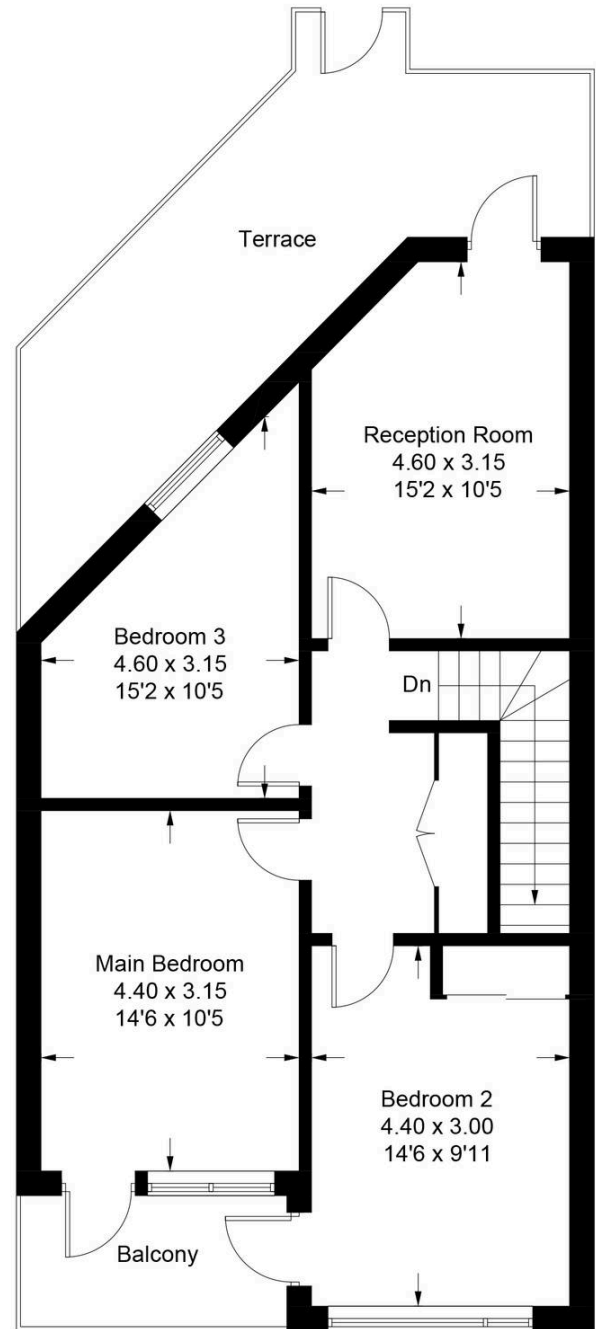


# Ridge Road, Tooting, CR4

Approximate Gross Internal Area = 116.03 sq m / 1249 sq ft



**Ground Floor**



**First Floor**

Illustration for identification purposes only, measurements are approximate, not to scale. Produced by Haboodle Estate Agents (ID1194223)



**haboodle**