



98 Norbury Hill, London

£900,000 Freehold



haboodle

A spacious 1930s family home with off-street parking, a 100ft garden and an immaculate garden room, set on one of Norbury's most sought-after roads.

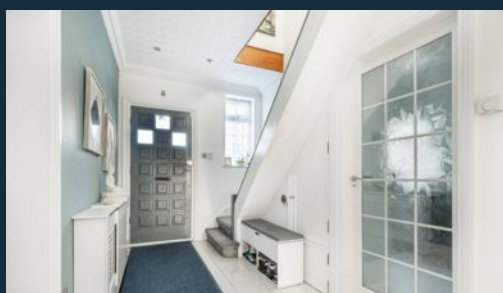
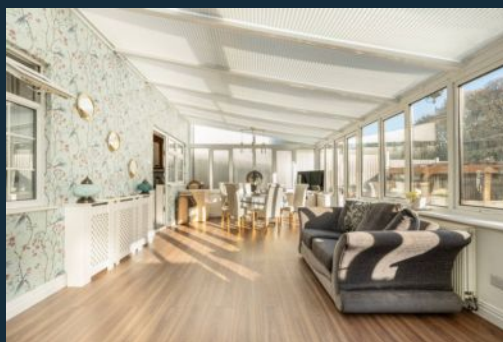
Set back behind a large private driveway, this impressive four-bedroom detached home on ever-popular Norbury Hill offers the perfect blend of space, character and convenience. It's a fantastic option for growing families and busy professionals, just a short walk from excellent transport links, local amenities, and sought-after schools.

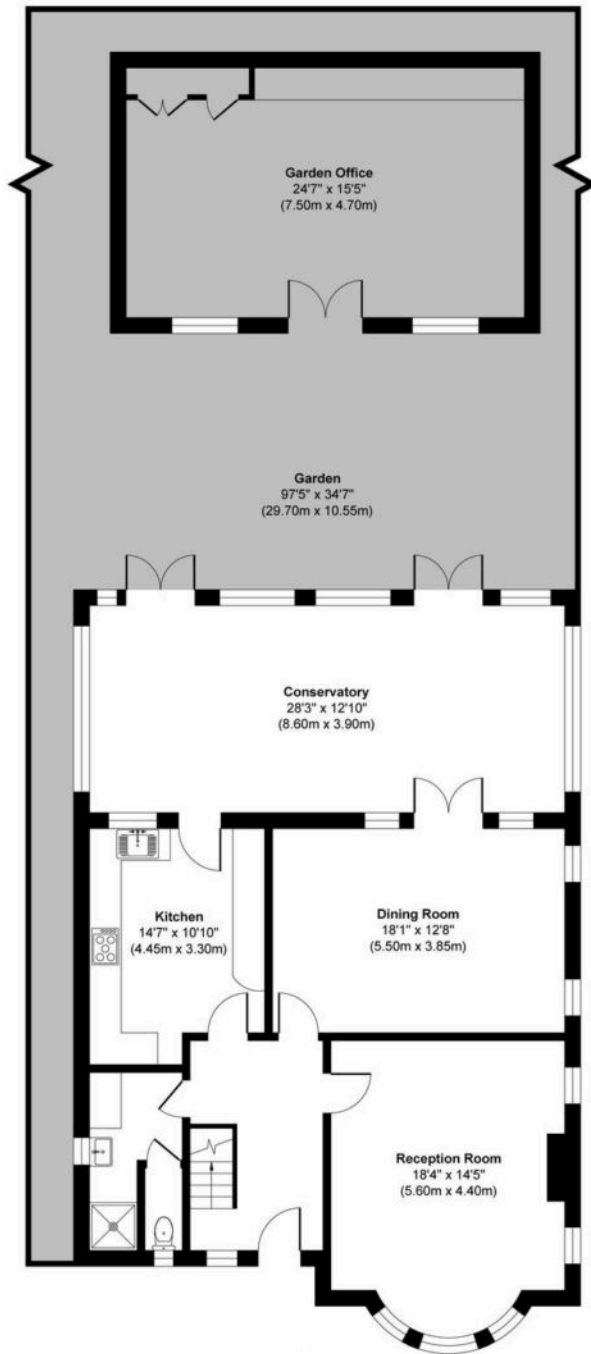
Inside, the sense of space is immediately apparent. A vast entrance hall leads to two generously proportioned reception rooms, a separate fitted kitchen, and a useful downstairs cloakroom. To the rear, a full-width conservatory floods the space with natural light and opens onto the garden, ideal for entertaining or simply relaxing at the end of the day.

Upstairs, you'll find three large double bedrooms and a fourth single room, perfect for a nursery, study or dressing room. A modern family bathroom

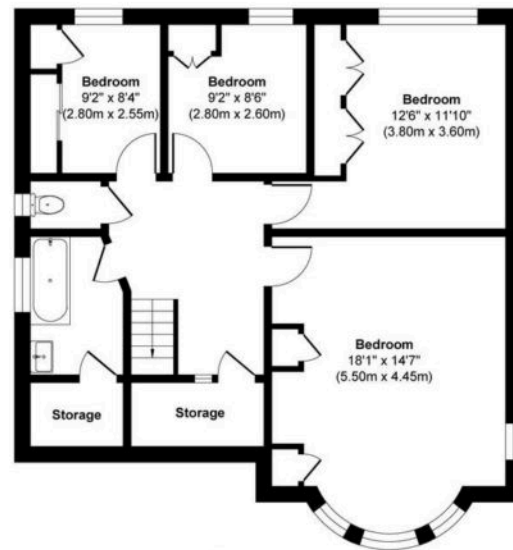


- › Detached 1930s family home on sought-after Norbury Hill
- › Four bedrooms, including three spacious doubles
- › Off-street parking for at least three cars
- › Two bright reception rooms and a separate kitchen
- › Full-width conservatory with views over the garden
- › Downstairs cloakroom for added convenience
- › Modern family bathroom and fitted wardrobes
- › Beautifully maintained 100ft rear garden
- › Immaculate brick-built garden





Ground Floor



First Floor

Norbury Hill, London SW16

Approx. Gross Internal Area 2,046 sq. ft / 190.06 sq. meters (Excluding Outbuilding)

Whilst every attempt has been made to ensure the accuracy of the floorplan shown, all measurements, positioning fixtures fittings and any other data shown are an approximate interpretation for illustrative purposes only and are not to scale. No responsibility is taken for any errors, omission, miss-statement or use of data show.

Plan produced by AR Net Media-www.arnetmedia.uk



haboodle