



256 Durnsford Road, London

£700,000 Freehold



habboodle

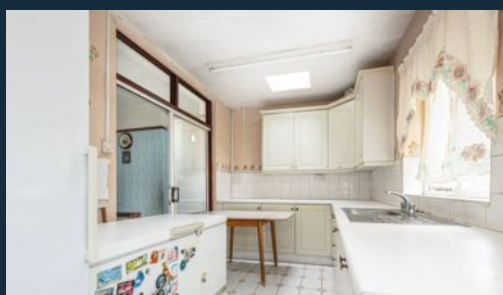
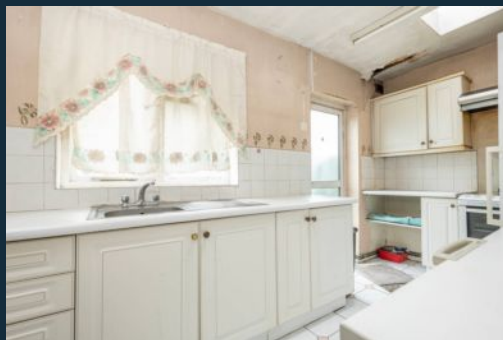


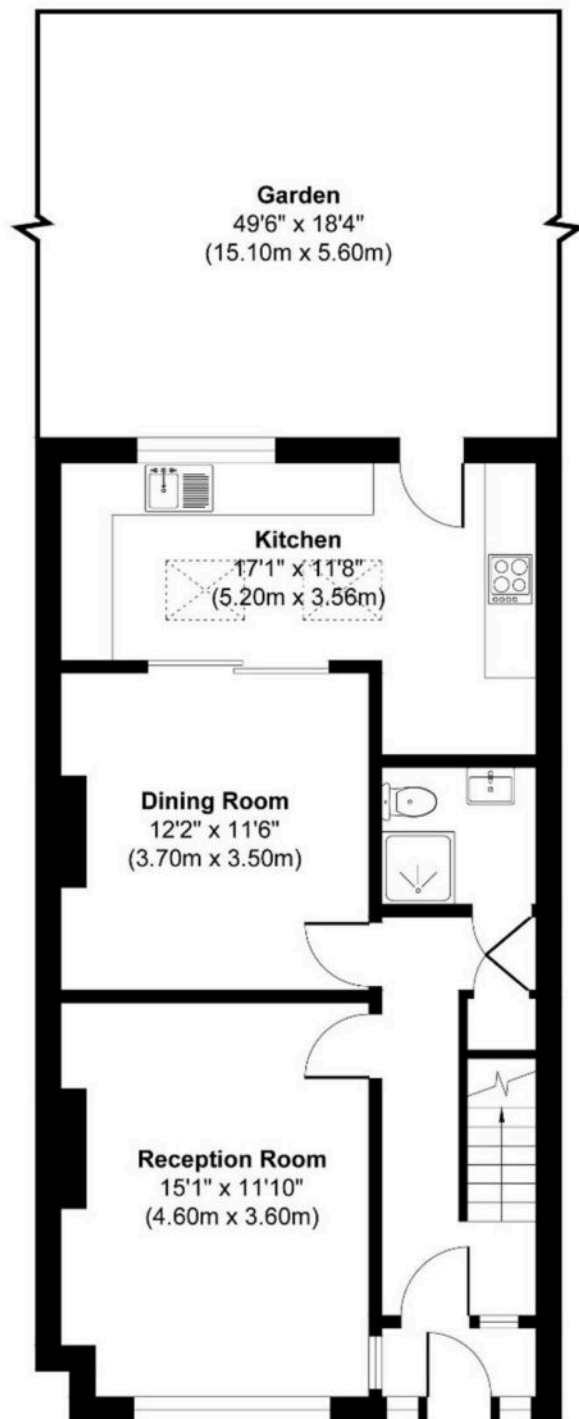
This charming three-bedroom Edwardian house, located on Durnsford Road in the heart of Wimbledon Park, presents a unique opportunity for renovation. While retaining its period charm, the property offers enormous potential for transformation. With scope for a rear extension and loft conversion, it's ideal for creating a bespoke family home.

Positioned in a desirable location, Wimbledon Park offers a vibrant community atmosphere with excellent local amenities. Enjoy the green expanses of Wimbledon Park itself, renowned schools, and convenient transport links, including easy access to Central London. This property is a rare find with significant future value.



- › Three Bedroom Edwardian House
- › In Need of Modernisation
- › No Chain
- › Two Reception Rooms
- › Two Bathrooms
- › Close To Wimbledon Park Tube And Parks
- › Easy Walk To Southfields And Earlsfield
- › Potential to Extend Into The Loft & Rear (STPP)





**Ground Floor**



**First Floor**

**Durnsford Road, London, SW19**

**Approx. Gross Internal Area 1109sq ft / 103.03sq meters**

Whilst every attempt has been made to ensure the accuracy of the floorplan shown, all measurements, positioning  
Fixtures fittings and any other data shown are an approximate interpretation for illustrative purposes only and are  
not to scale. No responsibility is taken for any errors, omission, miss-statement or use of data show.

Plan produced by AR Net Media-www.arnetmedia.uk



**haboodle**