



Flat 3, Stoneworth Court Birchanger Road, London
£180,000 Leasehold



haboodle

Set within a well-maintained gated building, this bright and airy flat is in good condition throughout, with the bonus of off-street parking, making it ideal for first-time buyers, downsizers, or savvy investors. The generous living space offers a warm and inviting atmosphere.

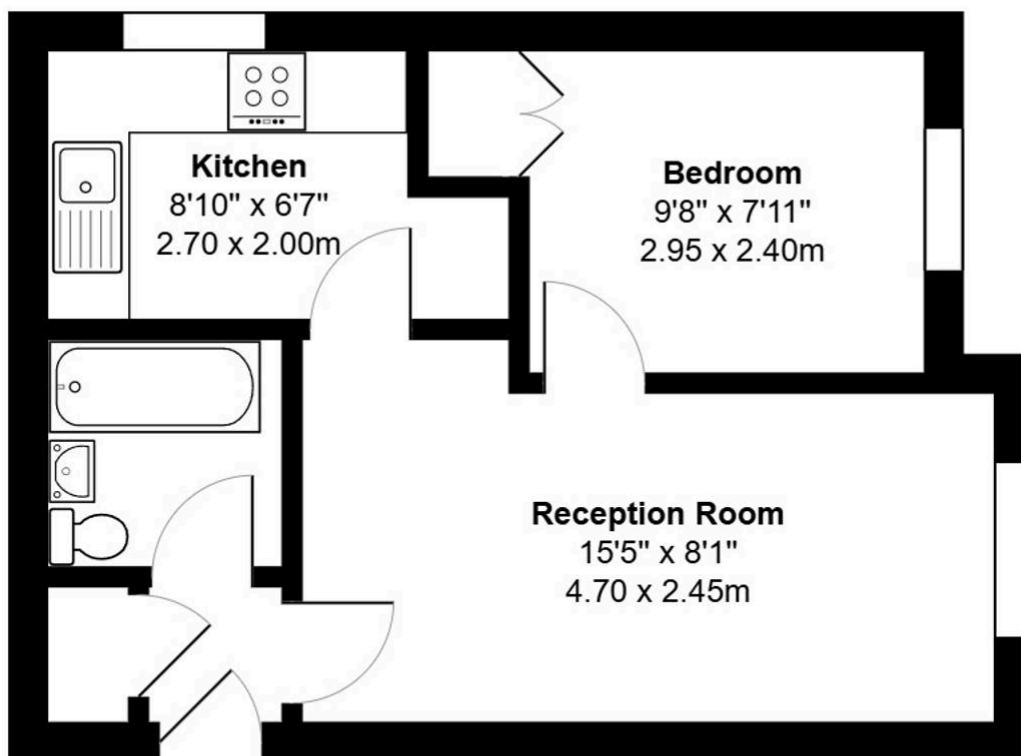
The property features a spacious double bedroom, a modern bathroom, and a well-equipped kitchen with plenty of storage. Large windows flood the space with natural light, enhancing the sense of openness and calm.

Located on Birchanger Road, you're just moments from excellent transport links, including Norwood Junction Station, which is ideal for quick commutes into Central London. Local shops, cafés, and the green open spaces of South Norwood Country Park are all within easy reach.



- › One spacious double bedroom
- › Bright living area with natural light
- › Well-maintained building
- › Modern kitchen with ample storage
- › Gated off street parking.
- › Convenient access to transport and amenities
- › No Onward Chain





Ground Floor

Stoneworth Court, Birchanger Road, London, SE25

Gross Internal Area 368sq ft / 34.2sq meters

Whilst every attempt has been made to ensure the accuracy of the floorplan shown, all measurements, positioning fixtures fittings and any other data shown are an approximate interpretation for illustrative purposes only and are not to scale. No responsibility is taken for any errors, omission, miss-statement or use of data shown.

Plan produced by AR Net Media - www.arnetmedia.uk



haboodle