



## Draxmont Court, Wimbledon, SW19

£450,000 Leasehold



haboodle

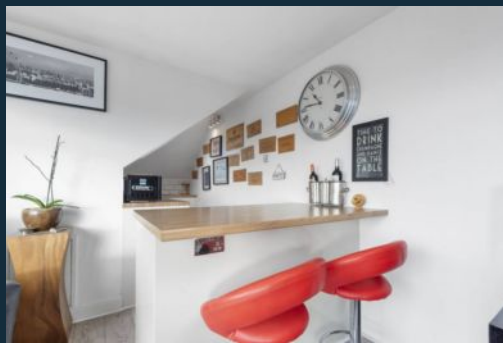


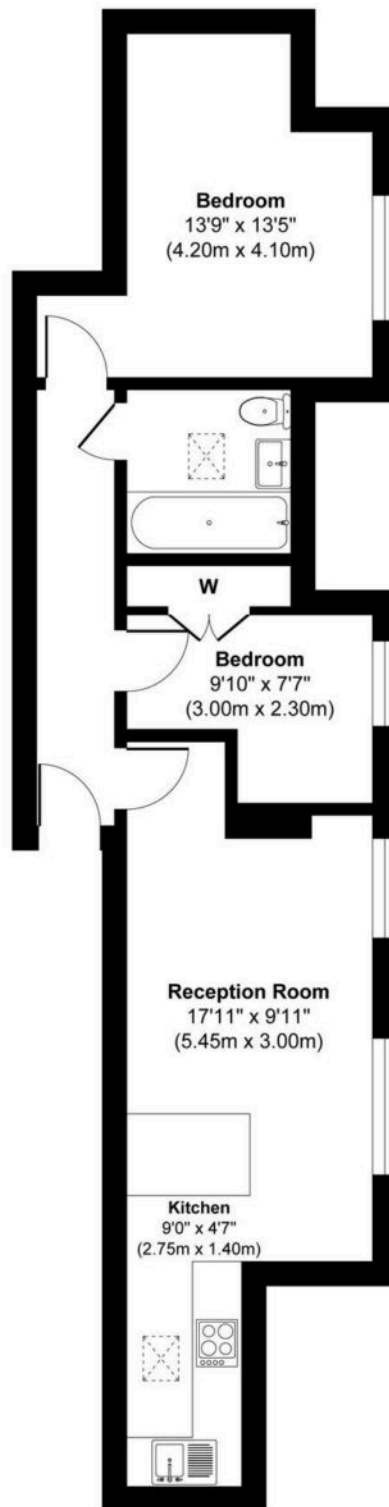
A Wimbledon Village two-bedroom apartment in immaculate condition, nestled in a quiet cul-de-sac with an easy short walk to Wimbledon Town Centre, offers modern living within this iconic South West London community. Offered with no onward chain and a long leasehold, this stunning apartment with allocated parking and well-kept communal gardens will make a perfect opportunity for anyone seeking their dream home.

The high quality and finish are immediately apparent when entering this apartment. The spacious hallway, with luxury wood-effect flooring, provides direct access to the modern open-plan kitchen and lounge, bright double bedroom, second bedroom, and elegant contemporary bathroom, which continues the luxurious feel of this home. The open-plan lounge and kitchen area are light-filled, benefitting from a stylish breakfast bar and complimented by wooden worktops. Tastefully decorated throughout with neutral, vibrant colours, this living area provides an excellent space to entertain and unwind.



- › Two Bedroom Flat
- › Chain Free
- › South West Facing Communal Garden
- › Quiet Cul-De-Sac
- › Long Lease
- › Allocated Parking
- › Immaculately Presented
- › Short Walk to Wimbledon Tube & Train Station
- › Moments from Wimbledon Village





#### First Floor

**Draxmont Court, Draxmont, London, SW19**

**Approx. Gross Internal Area 558 sq. ft / 51.87 sq. meters**

Whilst every attempt has been made to ensure the accuracy of the floorplan shown, all measurements, positioning, fixtures, fittings and any other data shown are an approximate interpretation for illustrative purposes only and are not to scale. No responsibility is taken for any errors, omission, miss-statement or use of data shown.

Plan produced by AR Net Media-[www.arnetmedia.uk](http://www.arnetmedia.uk)



**haboodle**