

269 Southcroft Road, London

£775,000 Freehold



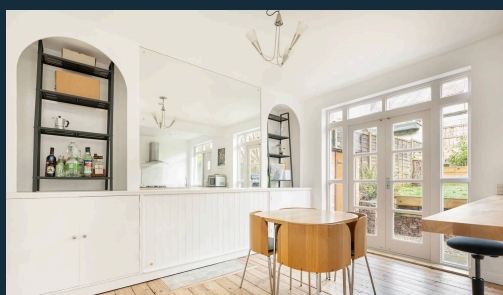
habboodle

This well-appointed property, extended over 3 floors, offers fantastic living space throughout. Located in the heart of the ever-popular Furzedown with its abundance of local amenities, this beautifully presented property will make a perfect home for first-time buyers, professionals and growing families. Combining period features with all the conveniences of modern living and a vast amount of functional space, this property will easily facilitate the whole family.

From the moment you step inside this home, you will immediately be struck by the sense of space and the natural light that floods throughout. A large entrance hall gives access to the ground floor accommodation comprising a spacious reception room, separate dining room, and an open-plan recently fitted kitchen with island-offering views and access to the rear garden. The well-laid-out fitted kitchen offers ample countertop and cupboard space, with a range of modern appliances, including a built-in oven and hob, dishwasher, washing machine and fridge freezer.

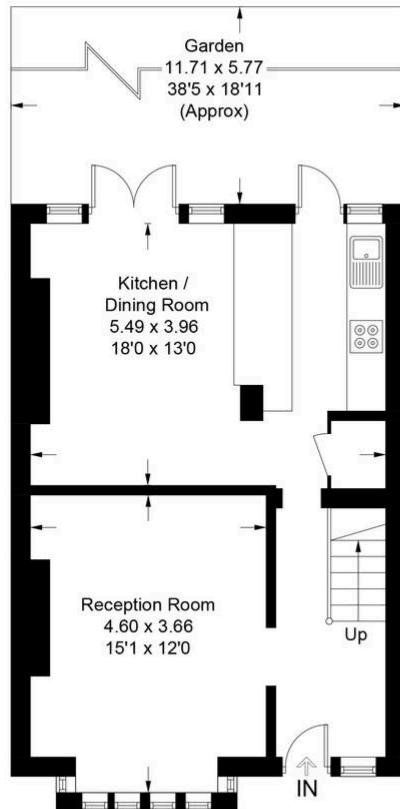


- › Four Bedroom Terrace House
- › Newly Fitted Open Plan Kitchen And Dining Room
- › Immaculately Decorated
- › Recently Fitted Modern Bathroom
- › Outstanding Graveney Secondary School & Primary Schools Nearby.
- › Fantastic Location With An Abundance of Excellent Amenities
- › Easy Access To Tooting Broadway Tube Station & Tooting Railway Station

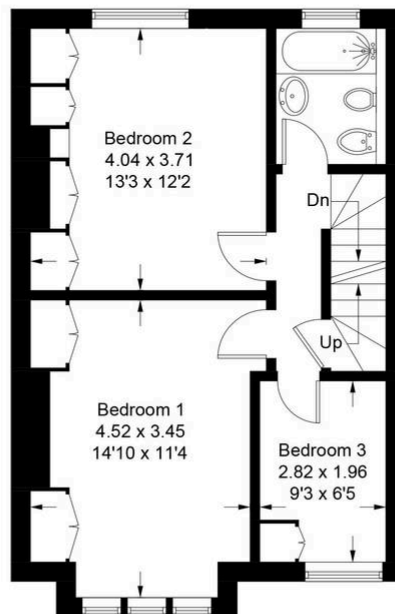


Southcroft Road, Streatham, SW16

Approximate Gross Internal Area = 112.0 sq m / 1206 sq ft

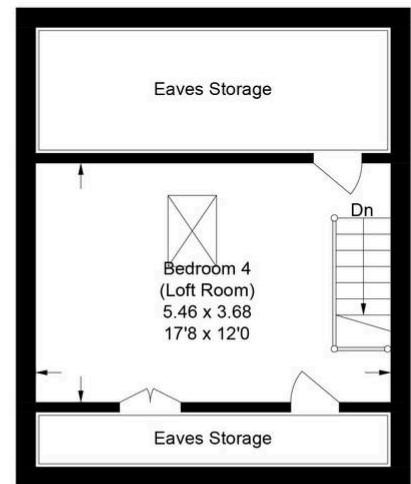


Ground Floor



First Floor

= Reduced headroom below 1.5m / 5'0"



Second Floor

Illustration for identification purposes only, measurements are approximate, not to scale. Produced by Haboodle Estate Agents (ID1158651)



haboodle