



34 Burghley Hall Close, London

£350,000 Leasehold



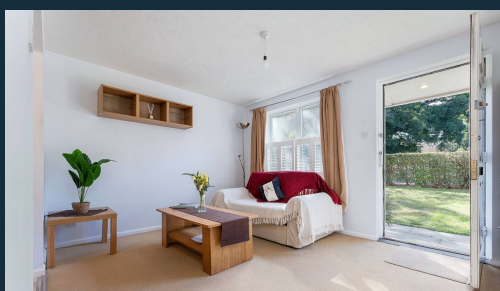
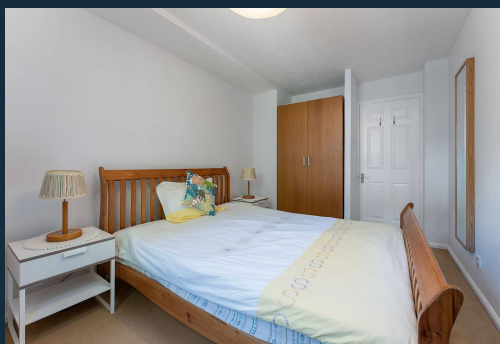
haboodle

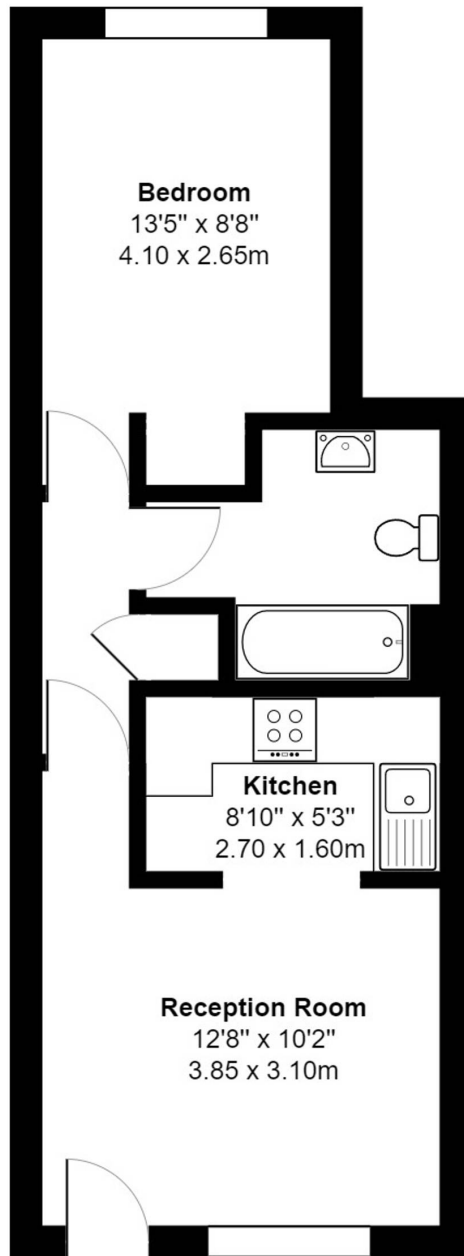
We are delighted to offer this lovely, modern one-bedroom flat in the leafy neighbourhood of Southfields. Conveniently located with just a short walk to Southfields Underground Station and many bus routes nearby, this location is ideal for those looking to get away from the busier parts of London but with all the conveniences of city living. It is also served by excellent road links – A3 & South Circular are under one mile away. With an abundance of fashionable cafes, restaurants, bars and shopping on your doorstep and easy access to some of the best parks and commons in London, it is no wonder this area is such a popular choice.

The accommodation comprises an attractive lounge, a well-fitted kitchen with an integrated hob and hood, a modern bathroom, and a double bedroom. All the rooms are well-proportioned and tastefully decorated in a neutral colour scheme. The property benefits from double glazing and electric night storage heaters. This apartment is offered with a very long lease (950 years in 2012).



- › One Double Bedroom Flat
- › Private Front Door Access
- › Modern Private Development
- › Allocated Parking
- › Communal Gardens
- › Easy Commuting – Multiple Transport Links Within Walking Distance
- › Excellent Location
- › 900+ Years on the Lease





Ground Floor

Burghley Hall Close, SW19
Gross Internal Area 390sq ft / 36.3sq meters

Whilst every attempt has been made to ensure the accuracy of the floorplan shown, all measurements, positioning fixtures fittings and any other data shown are an approximate interpretation for illustrative purposes only and are not to scale. No responsibility is taken for any errors, omission, miss-statement or use of data shown.
Plan produced by AR Net Media - www.armedia.uk



haboodle