



Flat 41, Solent Court, 1258 London Road

£250,000 Leasehold



haboodle



This superb one bedroom apartment is located on the 3rd floor of Solent Court, a modern development with an in-house gym, underground parking and a fantastic roof terrace. Located on London Road, this property has good access to a wide range of local shops and amenities and is within walking distance to Norbury railway station. Norbury further benefits from access to the tram network and several bus routes into central London.

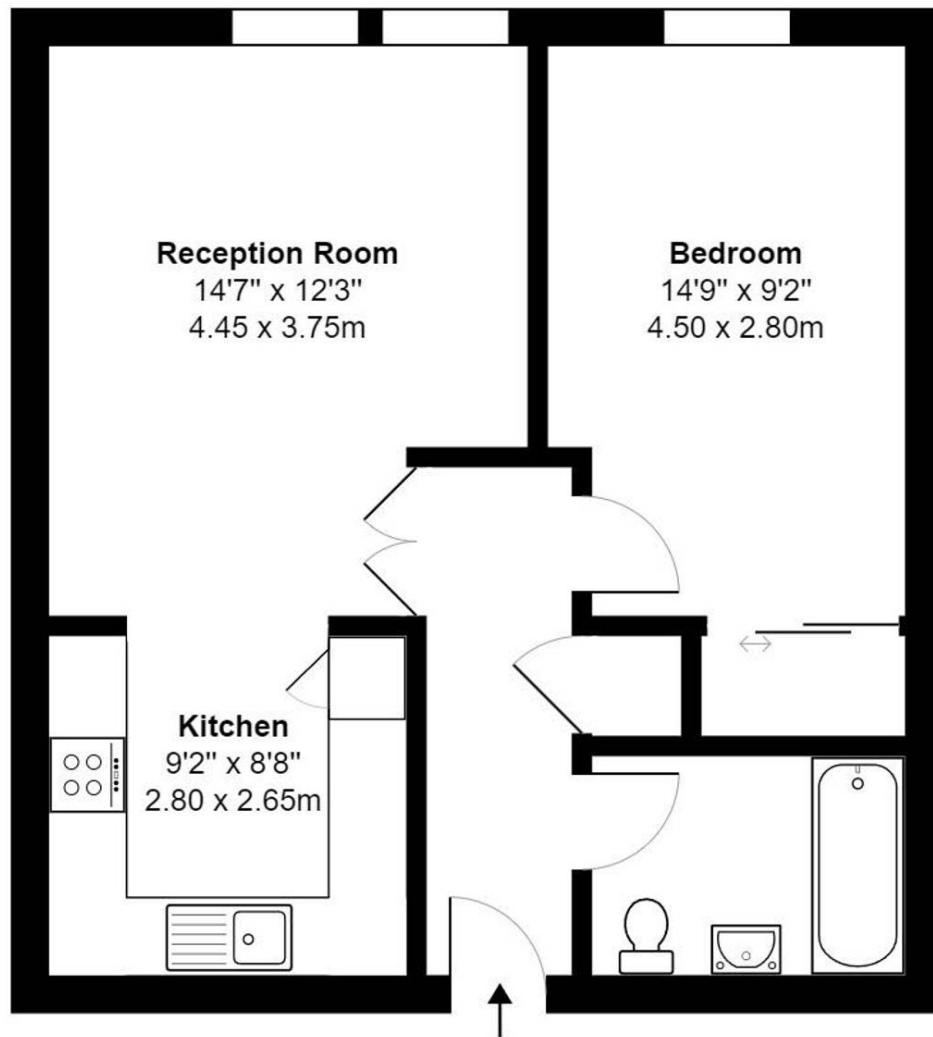
This stylish property offers a spacious reception room with a fully equipped open-plan kitchen complete with modern integrated appliances. This stylish property offers a spacious reception room with a fully equipped, modern open-plan kitchen with integrated appliances. The double bedroom is a good size with fully fitted wardrobes offering ample storage.

For added convenience there is an onsite concierge and lift.



- Concierge Service
- Spacious Reception Room
- Modern Open Plan Kitchen With Integrated Appliances
- Stunning Roof Terrace
- In-House Gym
- Lift
- Underground Parking
- Excellent Transport Links
- Within Walking Distance To Local Amenities
- Chain Free





### Third Floor

**Solent Court, 1258 London Rd, Norbury, London SW16**  
**Gross Internal Area 524sq ft / 48.7sq meters**

Whilst every attempt has been made to ensure the accuracy of the floorplan shown, all measurements, positioning fixtures fittings and any other data shown are an approximate interpretation for illustrative purposes only and are not to scale. No responsibility is taken for any errors, omission, miss-statement or use of data shown.  
Plan produced by AR Net Media - [www.arnetmedia.uk](http://www.arnetmedia.uk)



**haboodle**