

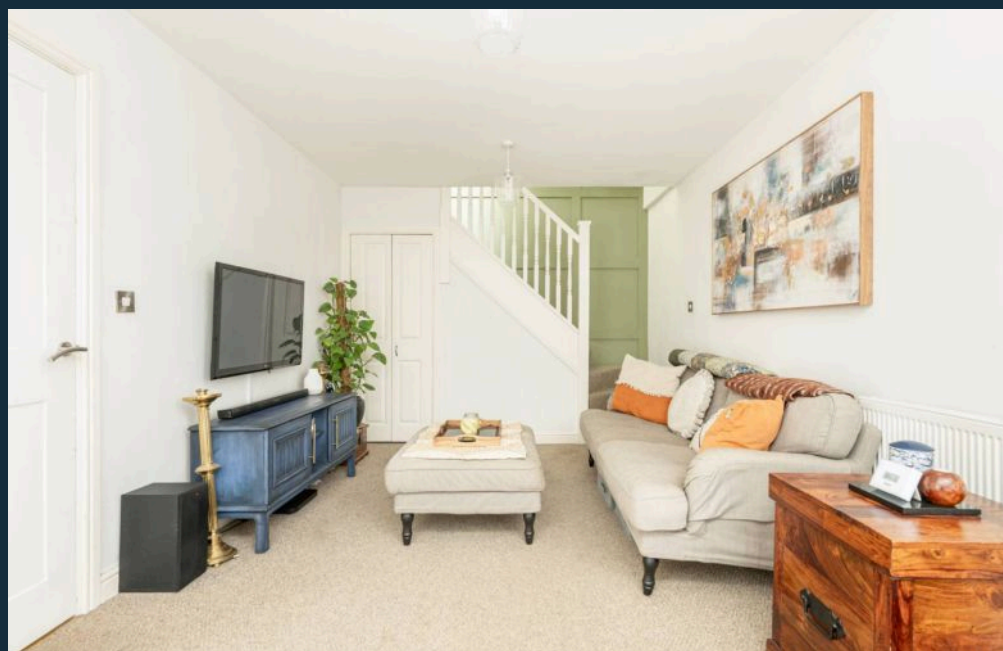
124b Greyhound Lane, London
£400,000 Freehold



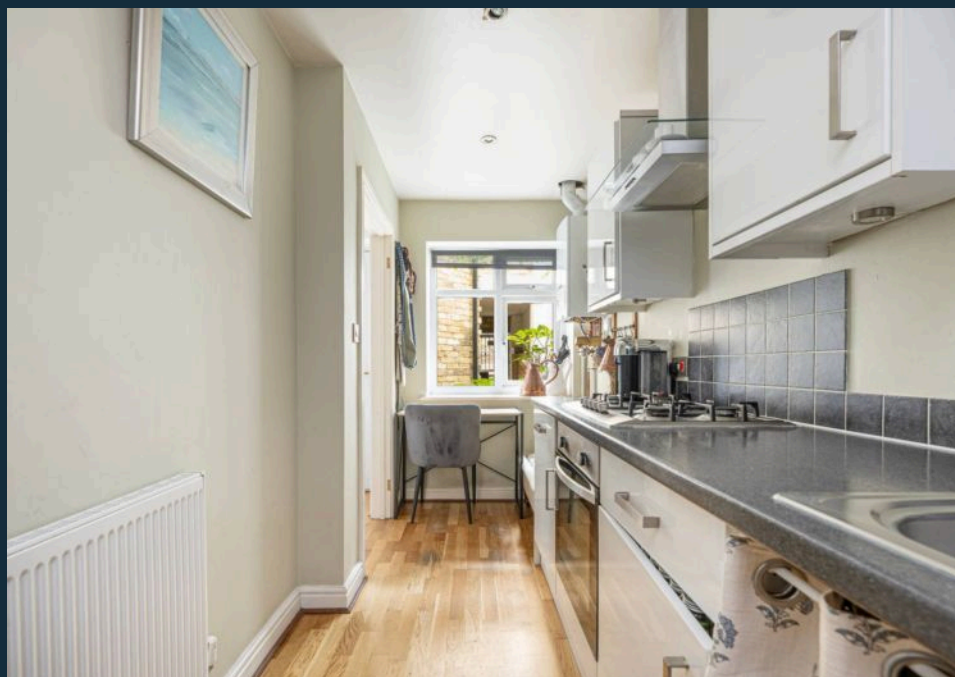
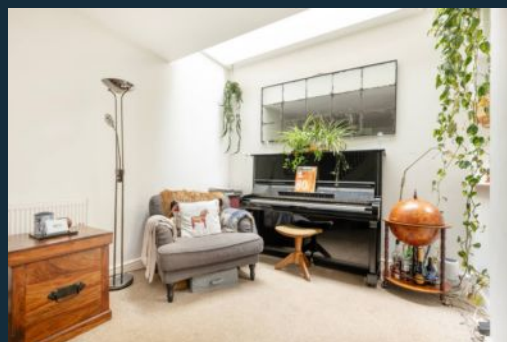
haboodle

Located moments away from the large open space that is Streatham Common, this immaculately presented Mews is ideally positioned. With just a short walk to Streatham & Streatham Common station, this delightful home is ideally positioned for commuters, offering quick services to the City via Southern Rail and City Thameslink lines. Several independent pubs, cafés, restaurants, and several outstanding schools are within close distance, as well as gyms, a leisure centre, and supermarkets, including an M&S food hall.

This character-filled property is accessed from its delightful courtyard garden, offering privacy and seclusion. The downstairs accommodation features a bright, modern kitchen with an integrated gas hob and oven, extractor fan and under-cupboard lighting. With a large window and wood effect flooring, the appealing kitchen has ample cupboard space and room for a small dining table/desk. The tastefully decorated reception room has a spacious feel that benefits from understairs storage, an open-plan staircase, and stylish wall panelling to the upper floor. This charming

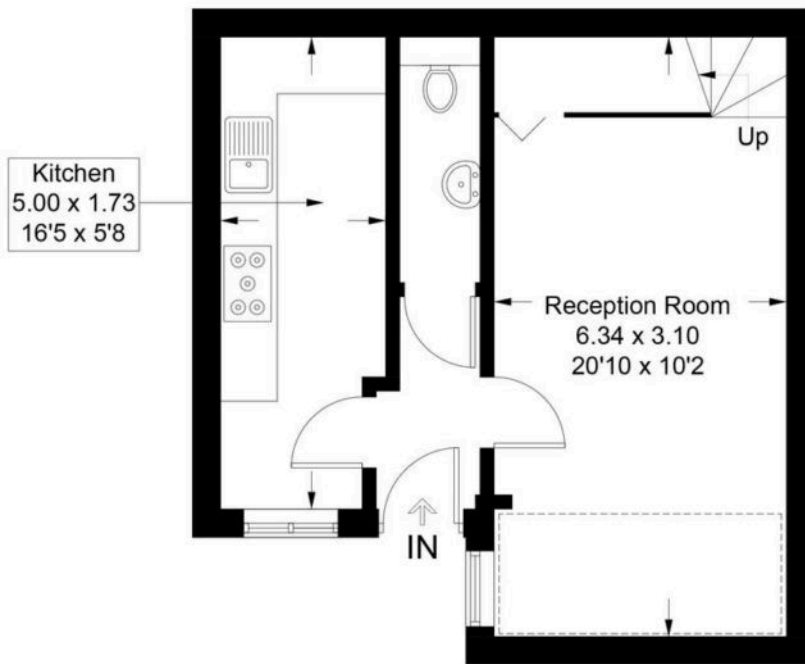


- › Two Bedroom House
- › Freehold
- › Courtyard Garden
- › Downstairs W.C.
- › Immaculately Presented
- › Good Local Amenities
- › EPC Rating C



Greyhound Lane, Streatham SW16

Approximate Gross Internal Area = 64.3 sq m / 692 sq ft



Ground Floor



First Floor

Illustration for identification purposes only, measurements are approximate, not to scale. Produced by Haboodle Estate Agents (ID1119594)



haboodle