

Flat 23, Imperial Court, 225 Streatham Road

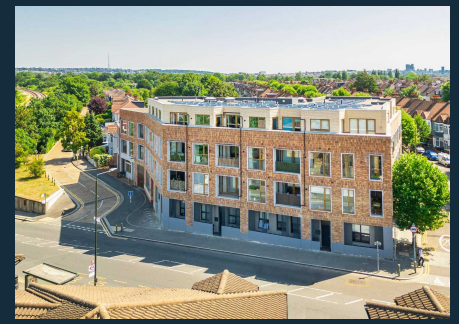
£375,000 Leasehold



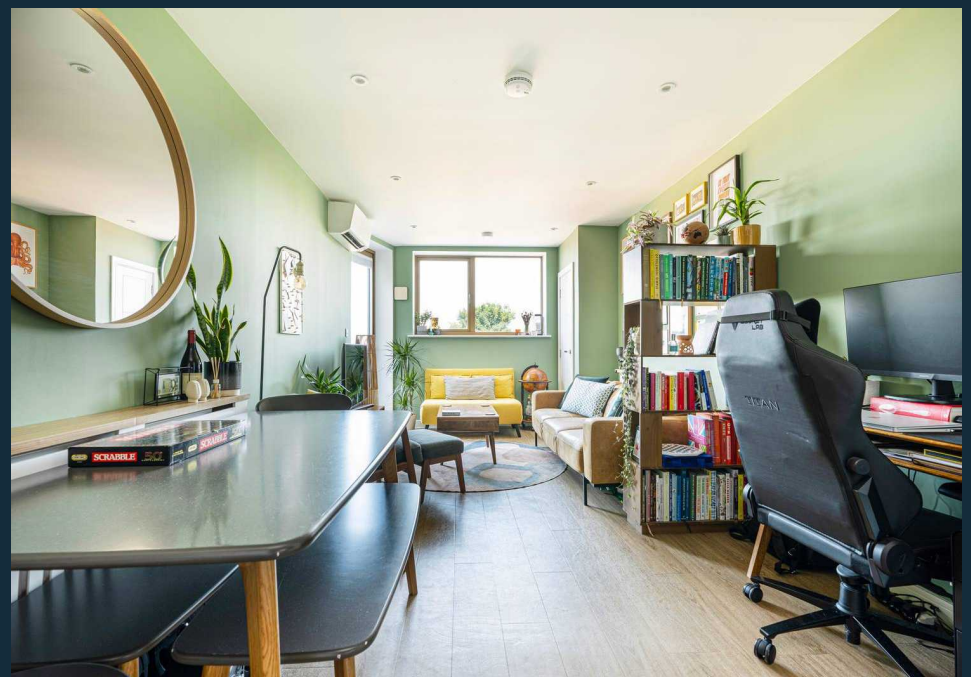
haboodle

Situated in a vibrant South London location, is this beautiful one bedroom apartment. With Streatham and Tooting transport links to the East and West, short train journeys offer convenient access to Wimbledon, Clapham Junction and Central London. This immaculately presented apartment combines convenience with high-spec, luxury modern living with immediate access to a wealth of good local shops, cafes and bar

On entering this third-floor apartment, the high quality and finish are immediately apparent. The spacious hallway with Karndean flooring provides direct access to the modern open-plan kitchen and lounge, bright double bedroom, and elegant contemporary bathroom. The open-plan lounge and kitchen area are light-filled, benefitting from direct access to the private, North West facing balcony, which is perfect for enjoying the afternoon sunshine and evening sunsets. The contemporary handleless kitchen units are complimented by stone worktops, adding a touch of luxury to this fully equipped kitchen, which features an integrated fridge freezer, built-in wine cooler, full-size integrated dishwasher and



- One Bedroom Apartment
- Modern Appliances & Granite Worktops
- Air Conditioning In Reception & Bedroom
- Long Leasehold 144 Years Remaining
- Private Roof Terrace
- Secure Underground Gated Parking
- Large Communal Garden
- Bike Storage
- Gas Central Heating
- EPC Rating B



Imperial Court - CR4

Approximate Gross Internal Area = 51.5 sq m / 554 sq ft



Third Floor

Illustration for identification purposes only, measurements are approximate, not to scale. Produced by Haboodle Estate Agents (ID1115503)



haboodle