



91 Fernlea Road, Mitcham

£500,000 Freehold



haboodle

This charming three-bedroom mid-terraced period property is beautifully presented and appointed to a good standard. The property retains a wealth of original period style features, including high ceilings and ornate cornicing, yet has been sympathetically modernised to create a superb living space. It has a bright and spacious reception room, kitchen/diner, utility, and first-floor family shower room.

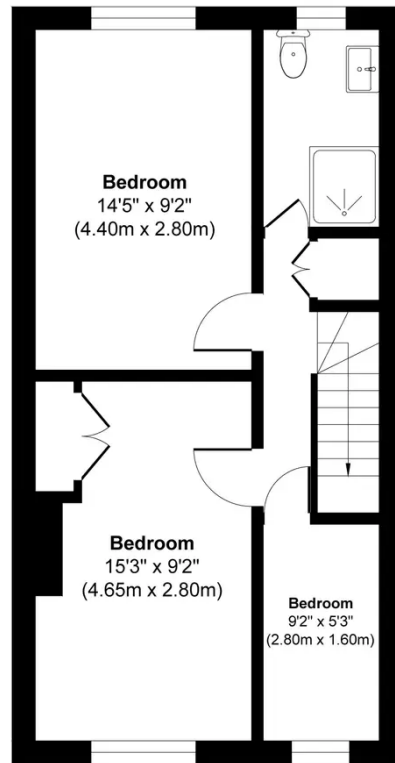
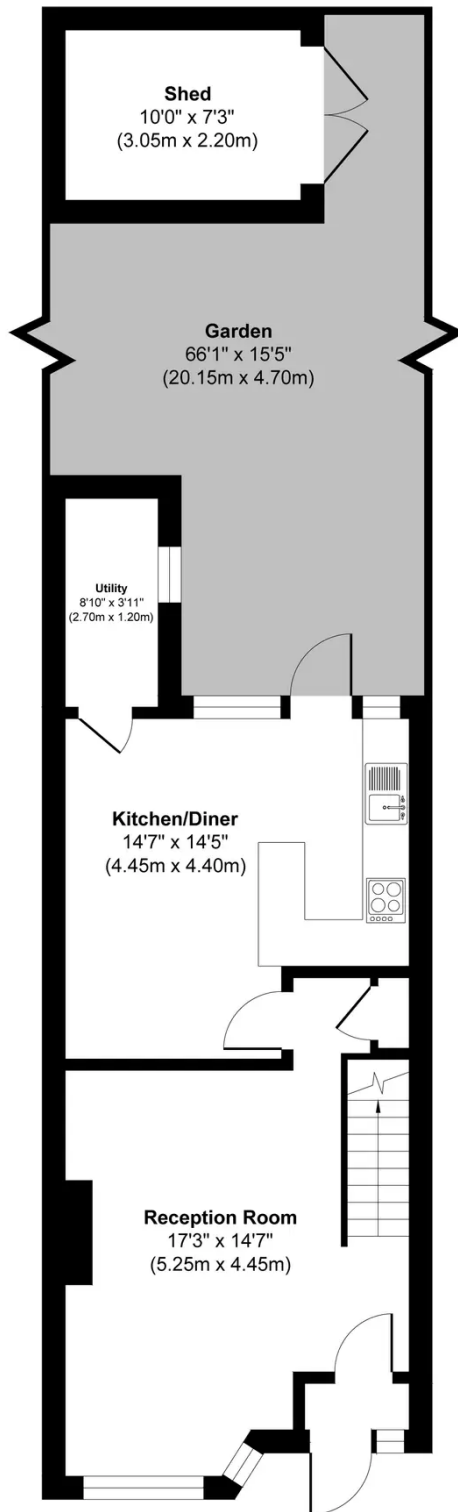
The reception leads directly into the kitchen/diner, which has views into the rear garden. The first floor provides two double bedrooms, a box bedroom/study, and a large shower room fitted to a high standard with high-quality fittings. The bedrooms are well-finished with neutral décor and carpet. Further features include attractive wooden floor flooring, gas central heating, double-glazed windows, and a large private garden with a patio and an outbuilding with power.

The property is conveniently located on a quiet private road in a residential setting within easy access of Mitcham Eastfields and Tooting



- ▶ Freehold House
- ▶ Three Bedroom Period Property
- ▶ Easy Access To Mitcham Eastfields And Tooting Stations
- ▶ Close To Local Shops And Amenities
- ▶ Potential To Extend (STPP)
- ▶ Large 66 ft Rear Garden With Outbuilding





Ground Floor

First Floor

Fernlea Rd, Mitcham CR4

Approx. Gross Internal 947.2sq ft / 88sq meters (Excluding Shed)

Whilst every attempt has been made to ensure the accuracy of the floorplan shown, all measurements, positioning, fixtures fittings and any other data shown are an approximate interpretation for illustrative purposes only and are not to scale. No responsibility is taken for any errors, omission, miss-statement or use of data show.

Plan produced by AR Net Media-www.arnetmedia.uk



haboodle