



60 Illingworth Close, Mitcham

£230,000 Leasehold



haboodle

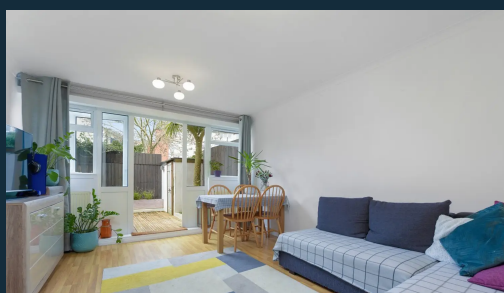
Nestled in vibrant Mitcham and on the borders of Colliers Wood, this exceptional ground-floor flat with a good-sized double bedroom presents a unique opportunity for comfortable and modern living. Boasting an array of impressive features, this home offers a perfect blend of style, convenience, and functionality in a sought-after location.

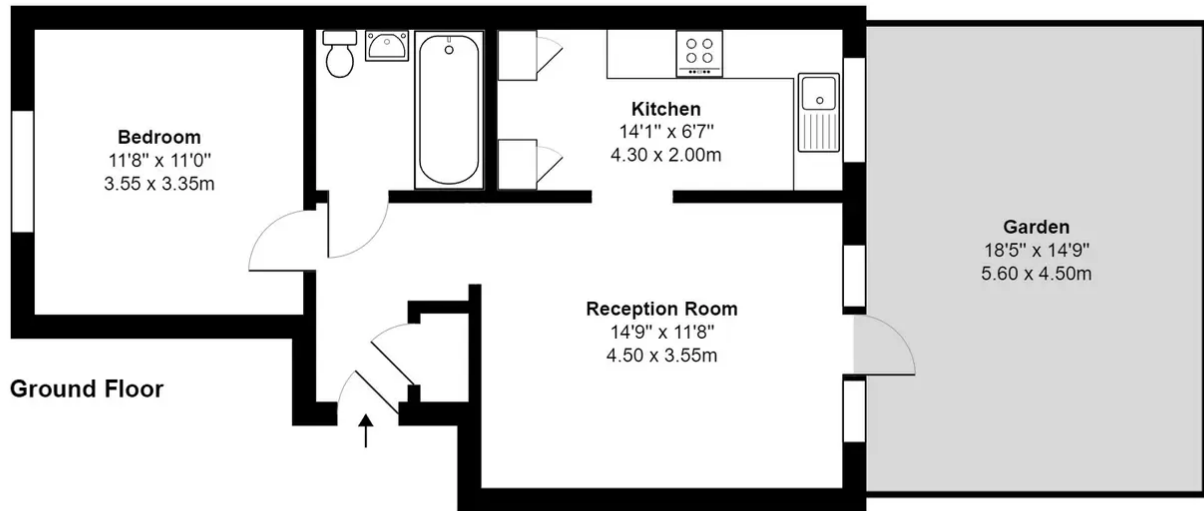
This is a well-maintained and thoughtfully upgraded ground-floor flat. The kitchen has a lovely contemporary feel and is a stand-out feature of the home. The spacious double bedroom has ample storage, a large window with great light, and built-in storage. The property also includes a modern bathroom finished to a high standard. To the rear, the garden is west-facing and a brilliant addition to the spacious flat.

Located in the popular area of Mitcham, it is within easy reach of local schools, shops and Morden Hall Park. Transport, boasting direct links into Central London. If you want to commute, Oxford Circus is just 45 minutes away. Colliers Wood Northern line tube station is within walking distance.



- › One Double Bedroom Apartment
- › New Contemporary Kitchen
- › Private West Facing Rear Garden
- › 548 SQ.FT.
- › Secure Entry System
- › Ample Parking Spaces Available
- › Short Walk To Multiple Transport Links
- › Double Glazed Throughout





**Illingworth Close, Mitcham, CR4**  
**Gross Internal Area 549sq ft / 51sq meters**

Whilst every attempt has been made to ensure the accuracy of the floorplan shown, all measurements, positioning fixtures fittings and any other data shown are an approximate interpretation for illustrative purposes only and are not to scale. No responsibility is taken for any errors, omission, miss-statement or use of data shown.  
Plan produced by AR Net Media - [www.arnetmedia.uk](http://www.arnetmedia.uk)