



Flat C, 40 Fernlea Road, London

£450,000 Share of Freehold

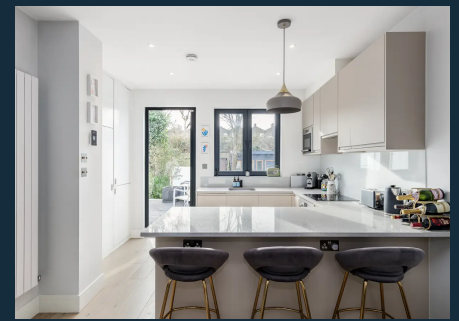


haboodle

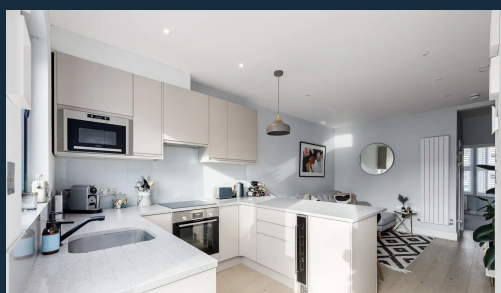
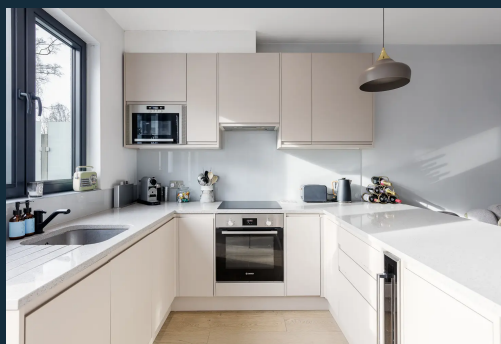
This idyllic one-bedroom apartment has been fully refurbished throughout with a modern interior while retaining its traditional character. This property is situated on a beautiful tree-lined street, 0.2 miles from Balham Underground & Overground Stations. It further benefits from direct access to a communal garden and a share of freehold.

The character of the building continues as you step inside this beautifully maintained and stylishly-finished apartment. An entrance hall provides direct access to the living room, bedroom and shower room. The spacious living room and open-plan kitchen area is light-filled, benefiting from a south-facing aspect and direct access to the shared terrace. Engineered oak wood flooring is complimented by a neutral colour scheme with vibrant accent colours. High-gloss kitchen finishes reflect the light, with integrated appliances including a built-in microwave, wine fridge, granite worktops and concealed lighting adding to the contemporary aesthetic.

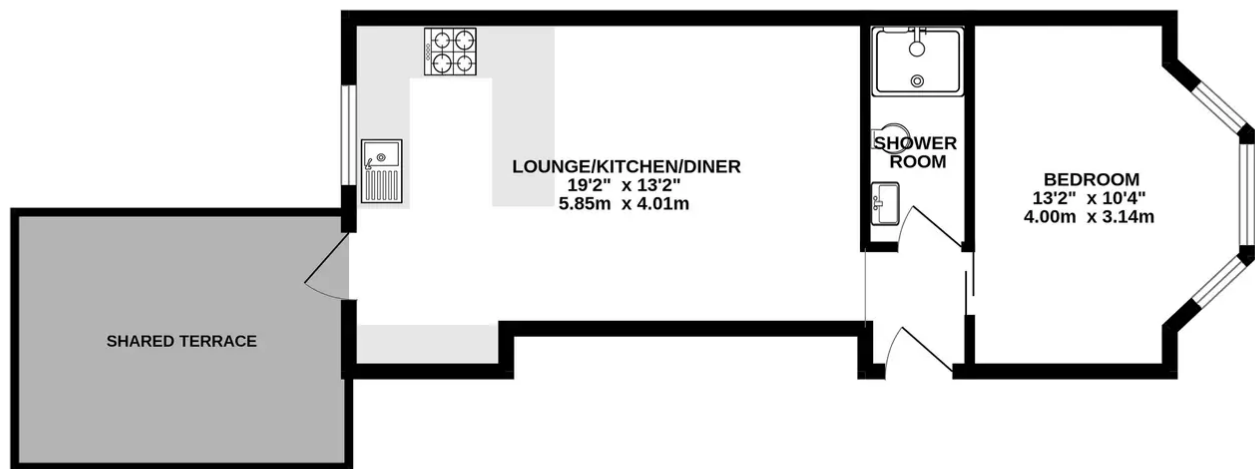
The bright double bedroom continues the neutral palette and features a



- › One Bedroom Apartment
- › Raised Ground Floor
- › On Street Permit Parking
- › Built-In Storage
- › Modern Appliances
- › Share Of Freehold
- › Double Glazed Windows
- › Direct Access To Shared Terrace
- › Close To Local Amenities
- › Excellent Transport Links
(London Bridge In 23 Minutes,
Bank In 25 And Oxford Circus In 25)



RAISED GROUND FLOOR
442 sq.ft. (41.1 sq.m.) approx.



TOTAL FLOOR AREA : 442 sq.ft. (41.1 sq.m.) approx.

Whilst every attempt has been made to ensure the accuracy of the floorplan contained here, measurements of doors, windows, rooms and any other items are approximate and no responsibility is taken for any error, omission or mis-statement. This plan is for illustrative purposes only and should be used as such by any prospective purchaser. The services, systems and appliances shown have not been tested and no guarantee as to their operability or efficiency can be given.



haboodle