



Flat A, 2 Wimbart Road, London

£500,000 Leasehold



haboodle

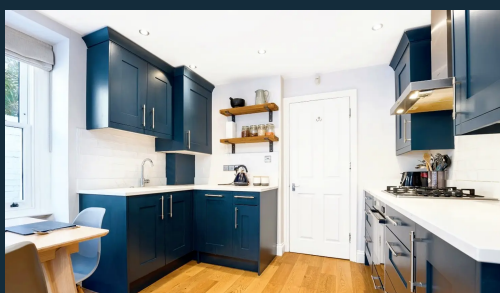
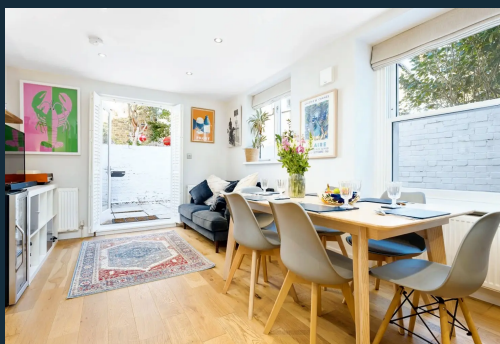
Nestled in the heart of vibrant Brixton, this exceptional ground-floor flat with two double bedrooms presents a unique opportunity for comfortable and modern living. Boasting an array of impressive features, this home offers a perfect blend of style, convenience, and functionality in a sought-after location.

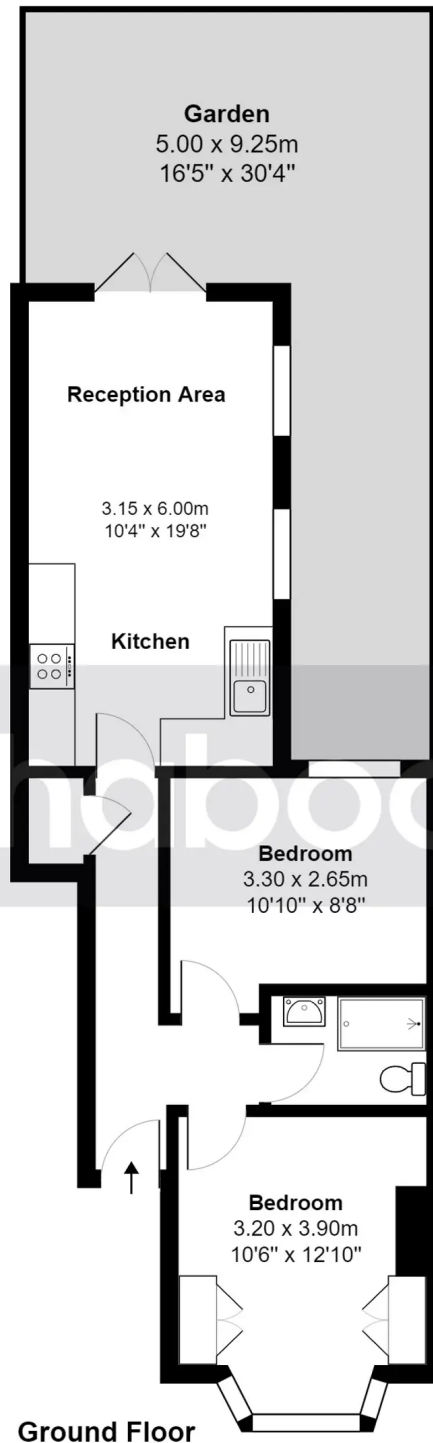
Step inside this meticulously maintained and thoughtfully upgraded ground-floor flat. The kitchen is a true masterpiece and a stand-out feature of the home, handcrafted in the UK. Top-of-the-line Neff appliances to enhance your culinary experiences while the InSinkErator adds an extra touch of convenience with stunning quartz worktops to add a touch of elegance to this dream kitchen.

Two spacious double bedrooms, both with ample storage and the front room also benefits from a large bay window which is double-glazed. The property also includes a new shower room finished to a high standard, and quality engineered wood flooring in the hallway and kitchen. Take



- Two Double Bedrooms
- Open-plan Kitchen Living
- Private Rear Terrace
- Long Leasehold Approx. 973 Years Remaining
- Recently Refurbished
- High Spec. Handmade Kitchen with Neff Appliances
- Short Walk to Brockwell Park
- Bay Window with Double Glazed Sash
- New Boiler with Hive Heating Controls
- No Onward Chain





Wimbart Rd, London SW2
Gross Internal Area 592sq ft / 55sq meters

Whilst every attempt has been made to ensure the accuracy of the floorplan shown, all measurements, positioning fixtures fittings and any other data shown are an approximate interpretation for illustrative purposes only and are not to scale. No responsibility is taken for any errors, omission, miss-statement or use of data shown.
Plan produced by AR Net Media - www.arnetmedia.uk



haboodle