



The Chimes Derby Road, Derby, DE65 5FP  
Guide price £349,999









# The Chimes Derby Road

## Derby, DE65 5FP

- LAST PLOT REMAINING
- Located in the heart of Old Hilton Village
- Air Source Heat Pump & Energy Efficient Double Glazing
- Spacious Lounge & Kitchen Diner
- Two Parking Spaces
- Superb High Specification – Select Development of only 4 Quality Bungalows
- Spacious Room proportions with over 1000 Square Feet of Living Accommodation
- Porch, Contemporary WC, Entrance Hallway & Store
- Two Double Bedrooms & Contemporary Four Piece Bathroom
- Landscaped Enclosed Rear Garden

**SUPERB NEW BUILD BUNGALOW – PART EXCHANGE CONSIDERED** – A stunning new build high specification two double bedroom detached bungalow, offering spacious and beautifully appointed accommodation with around 1000 square feet of living accommodation and set within this exclusive cul-de-sac position of only four quality detached bungalows, set within the heart of Old Hilton Village.

The property will have the benefit of energy efficient uPVC flush double glazed windows and air source heat pump. The accommodation will in brief comprises: entrance hallway, contemporary wc, spacious lounge, beautifully appointed kitchen diner complete with a range of quality energy efficient integrated appliances and french doors giving access to the rear garden. The property offers two generous double bedrooms and a contemporary four piece bathroom.

The property has off road parking with a parking spaces for two cars. The property offers landscaped front and rear gardens with the enclosed rear garden having a turfed lawn.



Guide price £349,999



WELCOME TO HILTON

LOCALITY & AMENITIES

BUILDING QUALITY HOMES – GLEBE HOMES

THE ACCOMMODATION

Porch

Contemporary WC

Hallway

Store

Spacious Lounge

Spacious Kitchen Diner

Main Bedroom

Double Bedroom Two

Contemporary Four Piece Bathroom



## OUTSIDE

Frontage & Two Parking Spaces

Landscaped Rear Garden

Please Note

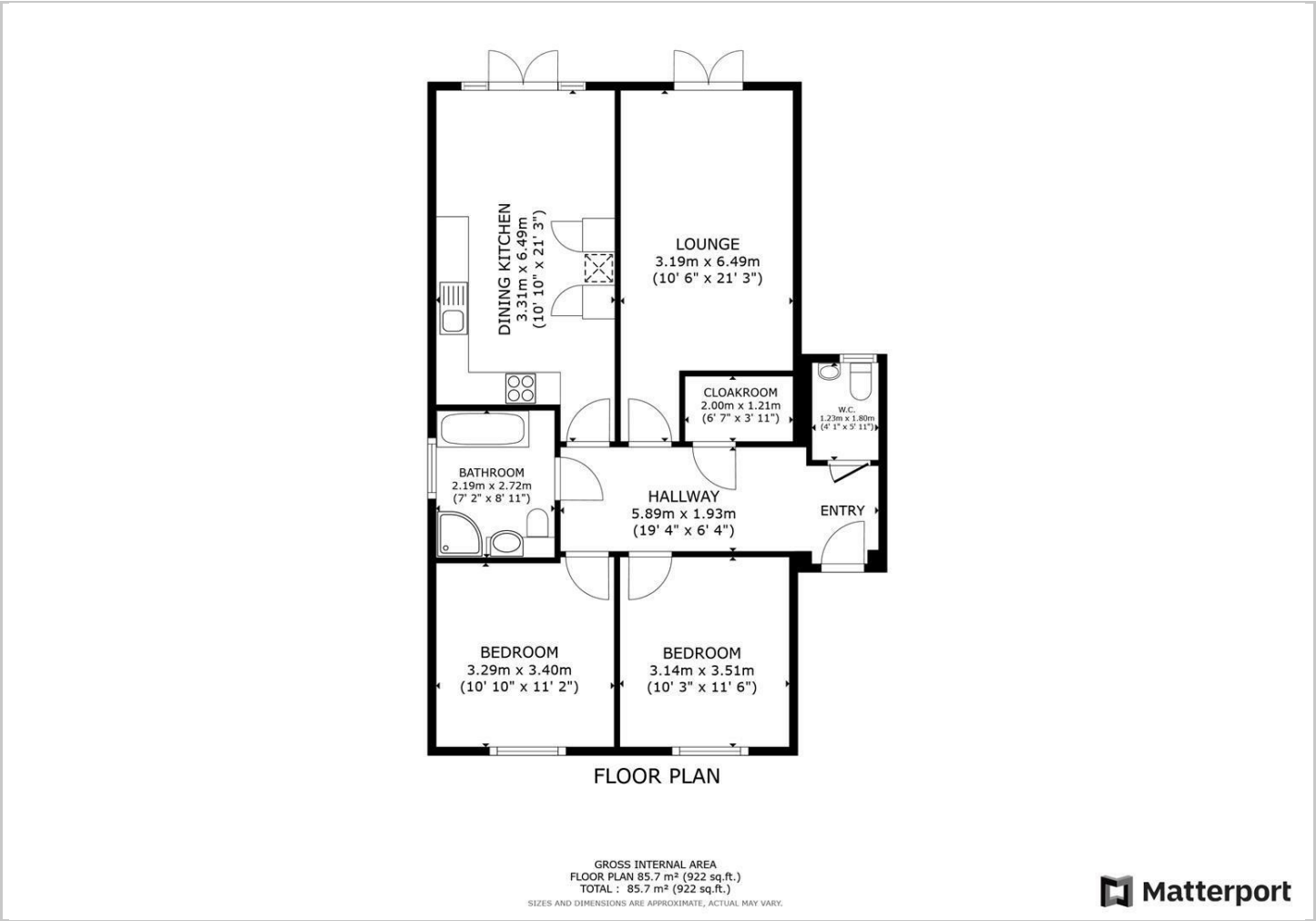
Directions







Floor Plans



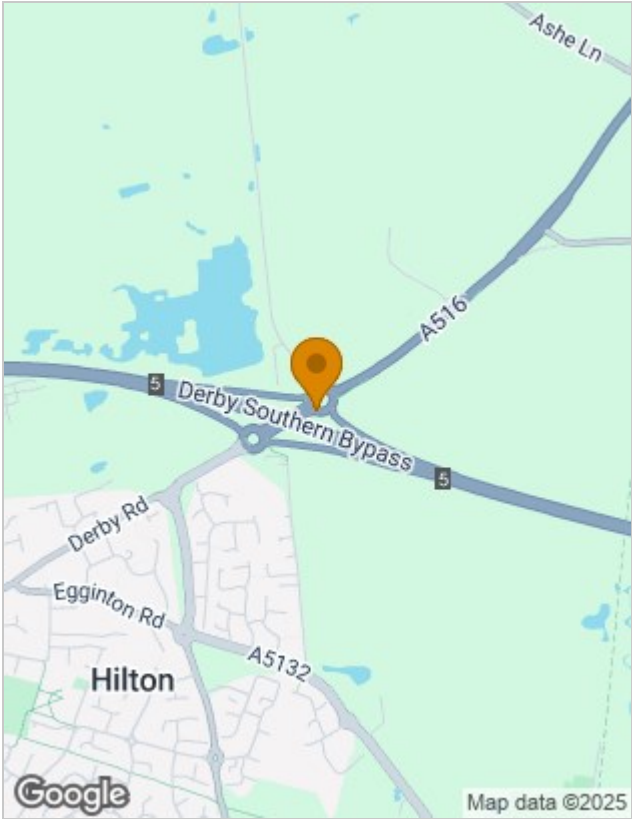
Viewing

Please contact our Derby Office on 01332 411050 if you wish to arrange a viewing appointment for this property or require further information.

The particulars are set out as a general outline only for the guidance of intended purchasers or lessees, and do not constitute, any part of a contract. Nothing in these particulars shall be deemed to be a statement that the property is in good structural condition or otherwise nor that any of the services, appliances, equipment or facilities are in good working order. Purchasers should satisfy themselves of this prior to purchasing.

First Floor, Darley Abbey Mills Middle Mill, Darley Abbey, Derby, DE22 1DZ  
Tel: 01332 411050 Email: hello@curranbirds.co curranbirds.co

Location Map



Energy Performance Graph

