

Patterdale Mews, Old Hall Avenue,
Littleover

CURRAN
BIRDS
+ CO

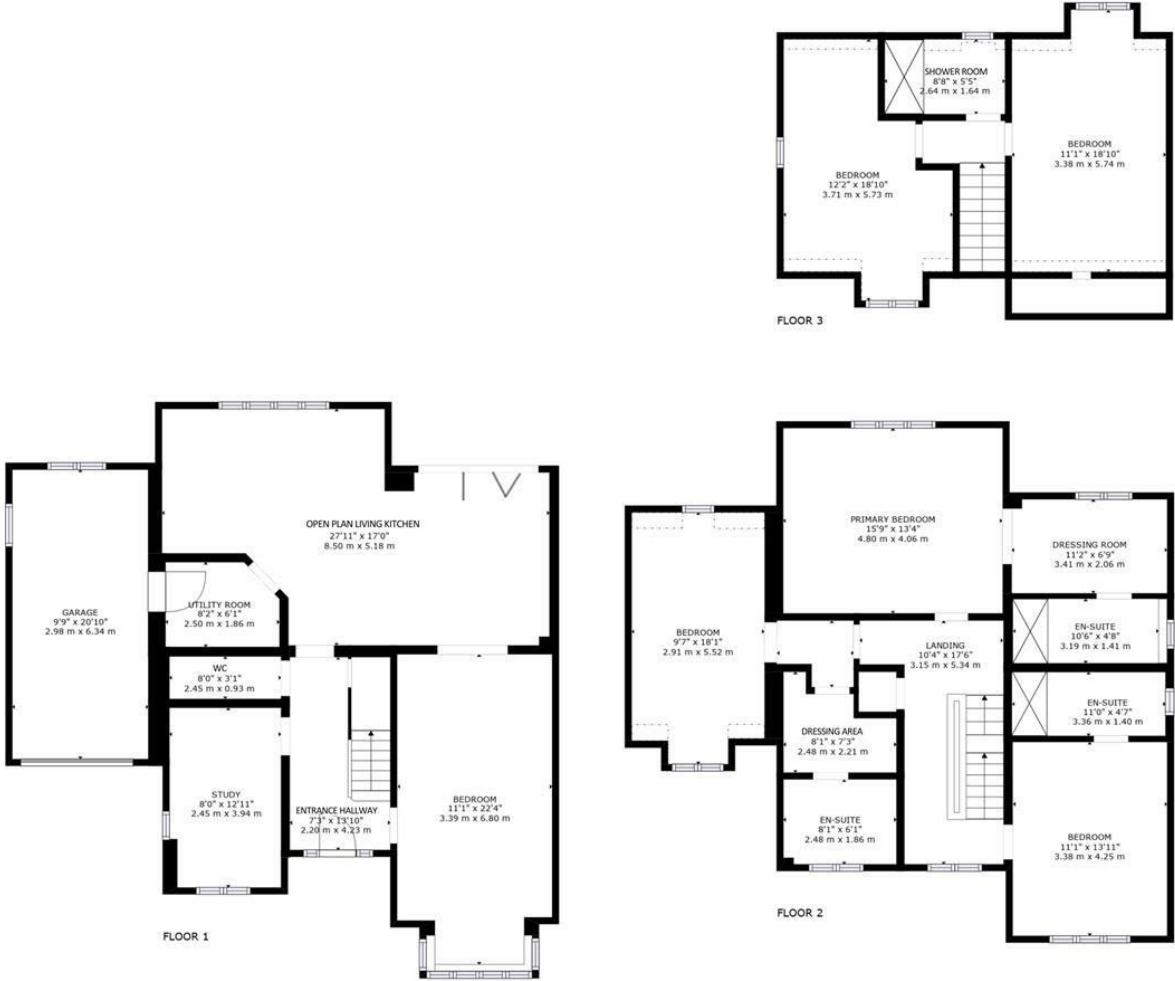


Old Hall Avenue, Derby, DE23 6EN

Price £775,000



Floor Plan



TOTAL: 2441 sq. ft, 227 m2

FLOOR 1: 926 sq. ft, 86 m2, FLOOR 2: 1034 sq. ft, 96 m2, FLOOR 3: 481 sq. ft, 45 m2
 EXCLUDED AREAS: GARAGE: 203 sq. ft, 19 m2, CRAWL SPACE: 46 sq. ft, 2 m2

SIZES AND DIMENSIONS ARE APPROXIMATE, ACTUAL MAY VARY.







LITTLEOVER SCHOOL & WREN PARK SCHOOL CATCHMENT - A most spacious high quality five double bedroom new build detached home of style and character, offering around 2400 square feet of living accommodation over three floors, with excellent energy efficiency including solar panels, excellent insulation and underfloor heating to the ground floor. The property is constructed to a high standard with a high quality specification.

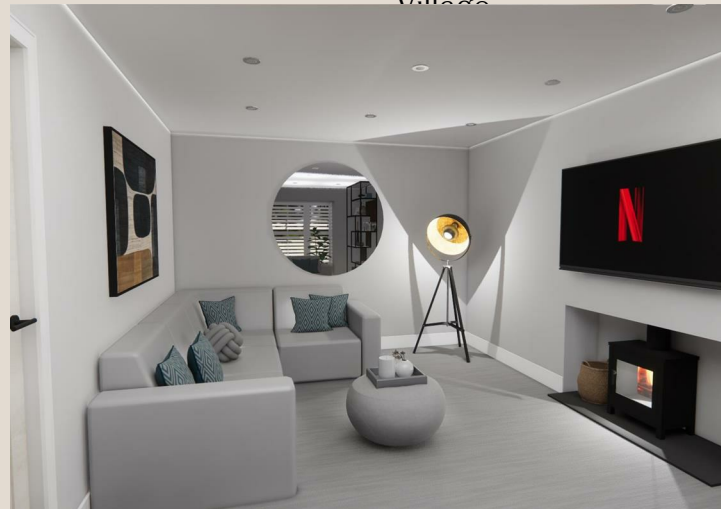
The property is constructed to an exacting specification by a reputable local builder and will benefit from a 10 year NHBC Guarantee and is due for completion in summer 2024. The property also includes a full flooring package and landscaped gardens. For an early reservation, clients are able to choose from a range of kitchen, bathroom and tiling options.

The accommodation has underfloor heating to the ground floor, gas central heating and quality flush casement uPVC double glazed windows. In brief the accommodation comprises: entrance hallway, cloakroom, lounge, study, utility room and superb open plan living dining kitchen with bi-folding doors giving access to the rear garden.

The first floor landing leads to three double bedrooms. The spacious primary bedroom and bedroom two have the benefit of dressing areas and en-suite, bedroom three also has the benefit of an en-suite shower room. The second floor landing give access to: two further double bedrooms and shower room.

Outside are landscaped gardens to the front and rear with driveway to the front leading to the single integral garage and electric car charging point.

- Superior New Build Detached Home
- Around 2400 Square Feet of Living Accommodation
- Entrance Hall, Lounge with Bay Window, Study, Cloakroom & Utility Room
- Five Double Bedrooms with Four En-Suites
- Littleover School Catchment & Wren Park Primary School Catchment
- High Specification Home
- Energy Efficient Home with Solar Panels & Underfloor Heating
- Superb Open Plan Living Dining Kitchen with Bi-Folding Doors
- Driveway, Electric Car Charger, Single Garage & Landscaped Gardens,
- Close to the Royal Derby Hospital & Excellent Amenities in Littleover Village







LOCALITY & AMENITIES

The property occupies a convenient cul-de-sac location within walking distance to the Royal Derby Hospital. There is an excellent range of amenities in Littleover Village centre, including a supermarket, post office, petrol station and a further range of retail outlets. Just a short drive away is Mickleover Village Centre which also offers a good range of local amenities, there is swift access to the A38 and A50 leading to the M1 motorway and the main motorway networks

The property falls within the catchment area for the noted Littleover Community School and is a short walking distance from Wren Park Primary school. Private education is also within walking distance at Derby High School and Derby Grammar School for boys.

This location is well positioned for employment opportunities at Rolls-Royce, Toyota, Derby University and The Royal Derby Hospital.

THE ACCOMMODATION

GROUND FLOOR

Entrance Hallway

13'10 x 7'3 (4.22m x 2.21m)

Cloakroom

8'0 x 3'1 (2.44m x 0.94m)

Study

12'11 x 8'0 (3.94m x 2.44m)

Lounge

22'4 into bay x 11'1 (6.81m into bay x 3.38m)

Open Plan Living Dining Kitchen

27'11 x 17'0 maximum (8.51m x 5.18m maximum)

Utility Room

8'2 x 6'1 (2.49m x 1.85m)

FIRST FLOOR

Landing

Primary Bedroom

15'9 x 13'4 (4.80m x 4.06m)

Dressing Room

11'2 x 6'9 (3.40m x 2.06m)

En-Suite

10'6 x 4'8 (3.20m x 1.42m)

Bedroom Two

18'1 x maximum x 9'7 (5.51m x maximum x 2.92m)

Dressing Area

7'3 x 8'1 (2.21m x 2.46m)

En-Suite

8'1 x 6'1 (2.46m x 1.85m)

Bedroom Three

13'11 x 11'1 (4.24m x 3.38m)

En-Suite

11'0 x 4'7 (3.35m x 1.40m)

SECOND FLOOR

Landing

Bedroom Four

18'10 maximum x 12'2 (5.74m maximum x 3.71m)

Bedroom Five

18'10 maximum x 11'1 (5.74m maximum x 3.38m)

En-Suite

8'8 x 5'5 (2.64m x 1.65m)

OUTSIDE

Frontage & Driveway

Single Garage

20'10 x 9'9 (6.35m x 2.97m)

Enclosed Rear Garden

Measured by Matterport

The room measurements, floor areas and floor plans have been created using Matterport. The room measurements and sizes are approximate and the actual sizes may vary.

PLEASE NOTE


The images are digitally created and are for illustrative purposes only.

Council Tax Band - (TBC)

Derby City Council



Energy Performance Graph

| Energy Efficiency Rating | | |
|--|----------------------------|---|
| | Current | Potential |
| <i>Very energy efficient - lower running costs</i> | | |
| (92 plus) A | | |
| (81-91) B | | |
| (69-80) C | | |
| (55-68) D | | |
| (39-54) E | | |
| (21-38) F | | |
| (1-20) G | | |
| <i>Not energy efficient - higher running costs</i> | | |
| England & Wales | EU Directive 2002/91/EC |  |

Viewing

Please contact our Derby Office on 01332 411050 if you wish to arrange a viewing appointment for this property or require further information.

Agents Disclaimer: Curran Birds + CO, their clients and employees 1: Are not authorised to make or give any representations or warranties in relation to the property either here or elsewhere, either on their own behalf or on behalf of their client or otherwise.

They assume no responsibility for any statement that may be made in these particulars. These particulars do not form part of any offer or contract and must not be relied upon as statements or representations of fact. 2: Any areas, measurements or distances are approximate. The text, photographs and plans are for guidance only and are not necessarily comprehensive. It should not be assumed that the property has all necessary planning, building regulation or other consents and Curran Birds + Co have not tested any services, equipment or facilities.

Purchasers must make further investigations and inspections before entering into any agreement.

The Old Post Office Victoria Street, Derby, DE1 1EQ
 Tel: 01332 411050 Email: hello@curranbirds.co curranbirds.co