



CHATTERTON | REES



5 Brookfield Mews, London, SW13 0DP

Offers in excess of £850,000

 4  3  1  B



5 Brookfield Mews

London, SW13 0DP

- Four Bedrooms
- Open Plan Living
- Private Entrance
- Three Bathrooms
- Private Terrace
- Off Street Parking

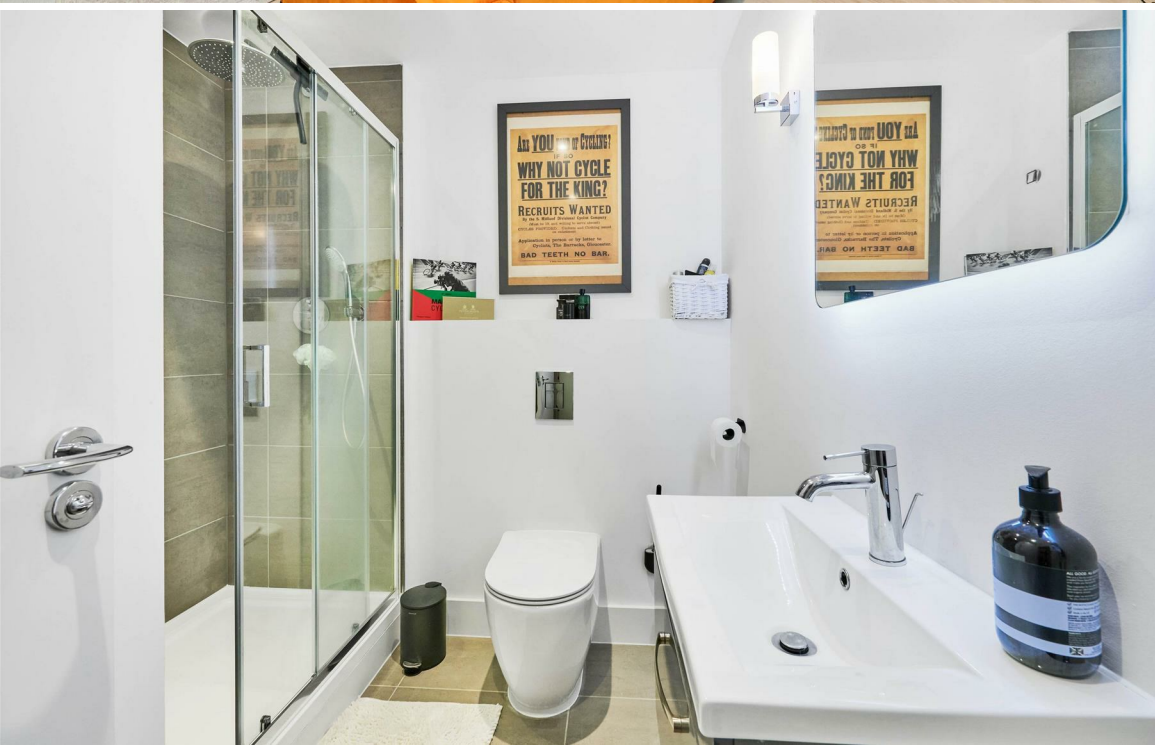
A beautifully presented 4 bedroom mews style property in the heart of Barnes. The property is not only in great condition throughout it also has over 1300sqft of internal space as well as a private outside terrace and off-street parking.

The property itself has its own front door and is split over two floors, the ground floor has the main reception/kitchen room that opens onto the terrace as well as two bedrooms and one bathroom with the lower floor holding the other two bedrooms and bathrooms.

Brookfield Mews is in an excellent location just off White Heart lane with plenty of shops, cafes, restaurants and pubs whilst being only a short distance from Barnes High street and two stations.

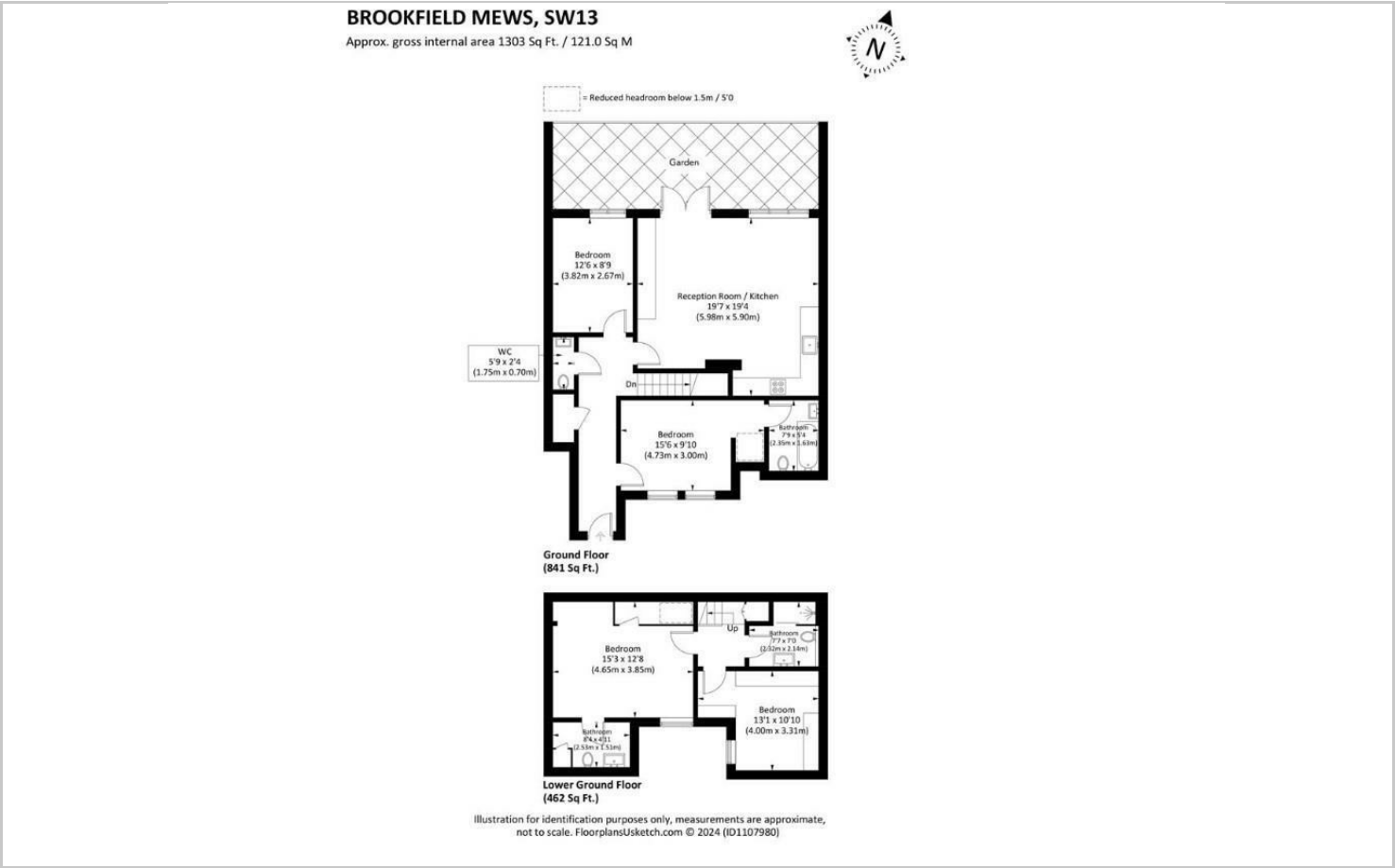
Offers in excess of £850,000







Floor Plans

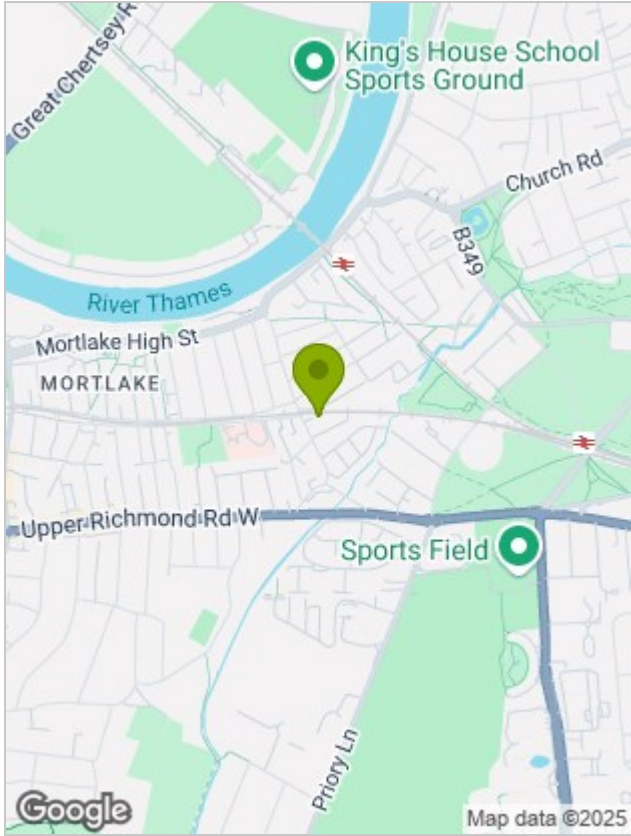


Viewing

Please contact our Sunningdale Country Homes Office on 020 3780 0580 if you wish to arrange a viewing appointment for this property or require further information.

The particulars are set out as a general outline only for the guidance of intended purchasers or lessees, and do not constitute, any part of a contract. Nothing in these particulars shall be deemed to be a statement that the property is in good structural condition or otherwise nor that any of the services, appliances, equipment or facilities are in good working order. Purchasers should satisfy themselves of this prior to purchasing.

Location Map



Energy Performance Graph

