



Staddle Stones, Kington

Worcester

Guide Price **£550,000**



Staddle Stones

Kington, Worcester

- Detached 3-bedroom home set within 0.5 acres (approx.) of land with views to the Malvern Hills
- Nestled in a peaceful countryside location, offering tranquil surroundings and lovely rural views
- Spacious kitchen/breakfast room enjoying beautiful views of the garden
- Two reception rooms with a central chimney
- Stunning landscaped 0.5 acres (approx.) garden, overlooking tranquil open countryside stretching to the Malvern Hills
- Private driveway parking and a garage
- Sought-after village of Kington, which is a charming village nestled between Worcester and Alcester

Council Tax band: E

Tenure: Freehold

EPC Energy Efficiency Rating: E

EPC Environmental Impact Rating:



Set within approximately 0.5 acres of beautifully landscaped gardens enjoying far-reaching views across open countryside to the Malvern Hills, this detached three-bedroom home is nestled in the peaceful and picturesque village of Kington—ideally located between Worcester and Alcester.

The extended home features a spacious kitchen/breakfast room that looks out over the garden, perfect for enjoying the changing seasons. Two reception rooms, centred around a central chimney, provide flexible and comfortable living space.

Outside, the extensive gardens offer a stunning backdrop, ideal for relaxing or entertaining while taking in the panoramic countryside views.

Additional benefits include private driveway parking, a garage, and the quiet charm of a highly sought-after village location. This delightful home combines space, privacy, and natural beauty in an idyllic setting.

Location

Kington is a charming village nestled between Worcester and Alcester, offering convenient access to Inkberrow and Stratford-upon-Avon. The area is well served by local schools, including Flyford Flavell First School, along with a range of further education options, most notably the highly regarded grammar schools in Worcester.

Tenure: Freehold

EPC Rating: E

Local District Council: Wychavon

Council Tax band: E

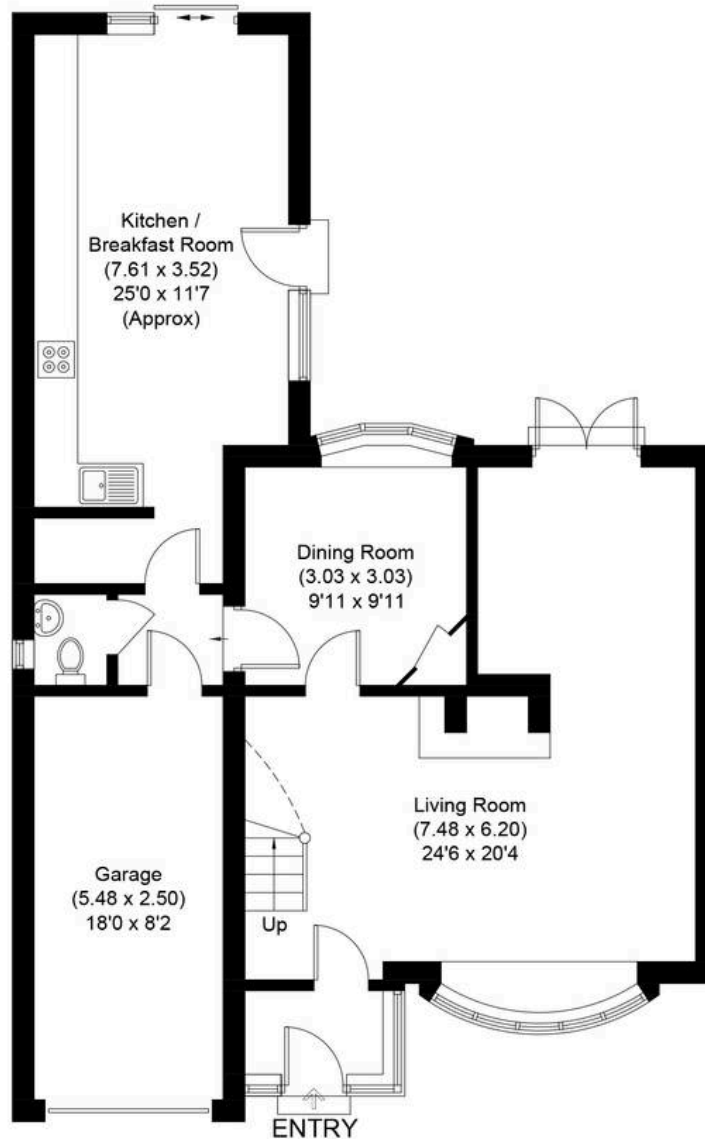




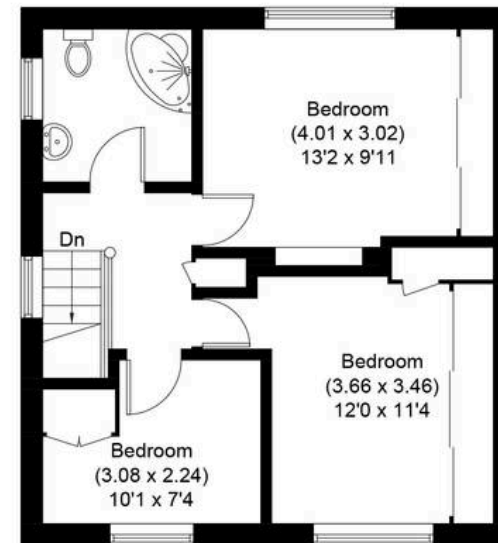


Staddle Stones

Approximate Gross Internal Area
Ground Floor = 91.7 sq m / 987 sq ft
(Including Garage)
First Floor = 42.2 sq m / 454 sq ft
Total = 133.9 sq m / 1441 sq ft



Ground Floor



First Floor

Illustration for identification purposes only, measurements are approximate, not to scale.



Jones & Associates

14 Bridge Street, Pershore - WR10 1AT

01386 291010 • info@jjaa.co.uk • www.jjaa.co.uk/