



20 Mount Pleasant, Pershore

Pershore

Guide Price **£495,000**



BESPOKE ESTATE AGENCY



20 Mount Pleasant

Pershore, Pershore

- Situated in Mount Pleasant, one of the most sought-after areas in Pershore
- Three-bedroom detached bungalow Views of Pershore Abbey & Bredon Hill
- Recently re-decorated, with new carpets and internal doors
- Fitted kitchen with oven, cooker hob & integral dishwasher
- Bedroom one with an en-suite shower room
- Fitted wardrobes in all three bedrooms
- Driveway & double garage
- Front & rear gardens
- Gas-fired central heating & double glazing throughout

Situated in Mount Pleasant, one of the most sought-after areas in Pershore, this beautifully presented three-bedroom detached bungalow offers views of Pershore Abbey and Bredon Hill. Council Tax band: E

Tenure: Freehold

EPC Energy Efficiency Rating: D

EPC Environmental Impact Rating: D



The accommodation comprises an entrance hall with a cloak cupboard, A living/dining room with a bay window, patio doors to the rear garden and a feature electric fireplace, fitted kitchen with oven, cooker hob, integral dishwasher, glazed door to the rear garden and access to an airing cupboard, three bedrooms, all with fitted wardrobes, while bedroom one has an en-suite shower room, and a family bathroom.

The secluded rear garden has unique views across Pershore capturing the Abbey and Bredon Hill beyond, and is bordered by various shrubs, having a patio seating area to the rear of the property, lawn, access to the double garage, and gated access to the front.

The double garage has electric garage doors, power and lighting.

To the front of the property is a spacious garden area and a double driveway to the garage which is suitable for parking two vehicles.

The property also benefits from being recently re-decorated, with new carpets and internal doors, gas fired central heating, double glazing throughout and access to high speed broadband internet.





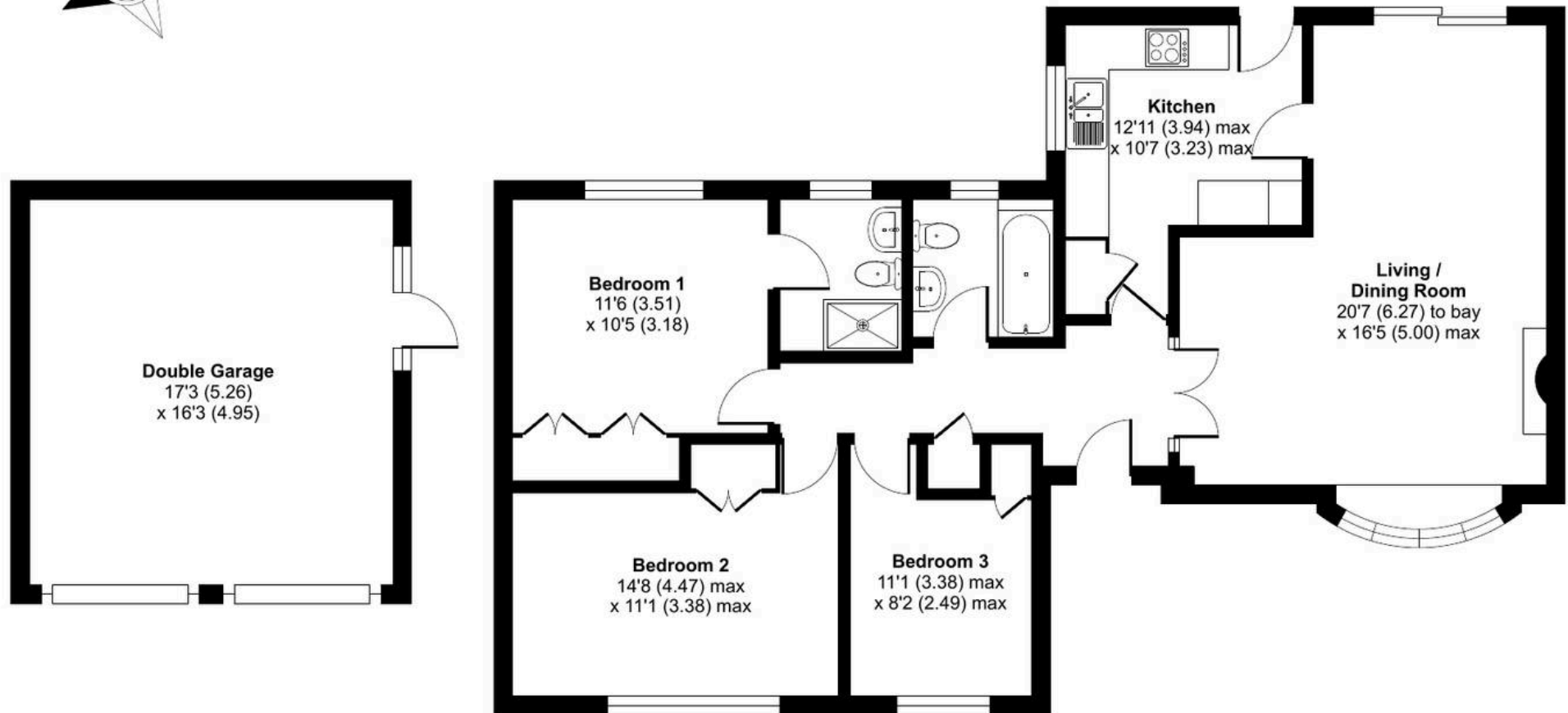
 **JONES &
ASSOCIATES**
BESPOKE ESTATE AGENCY



Mount Pleasant, Pershore, WR10

Approximate Area = 1278 sq ft / 118.7 sq m

For identification only - Not to scale



GROUND FLOOR



Floor plan produced in accordance with RICS Property Measurement Standards incorporating International Property Measurement Standards (IPMS2 Residential). © nichecom 2024. Produced for Jason Jones & Associates. REF: 1200495



BESPOKE ESTATE AGENCY



Jones & Associates

14 Bridge Street, Pershore - WR10 1AT

01386 291010 • info@jjaa.co.uk • www.jjaa.co.uk/

