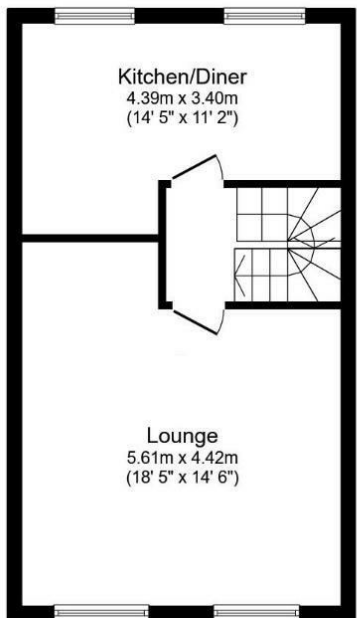
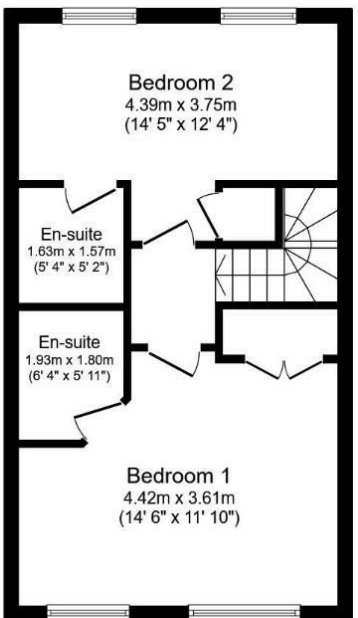


Ground Floor
Floor area 41.1 m² (442 sq.ft.)

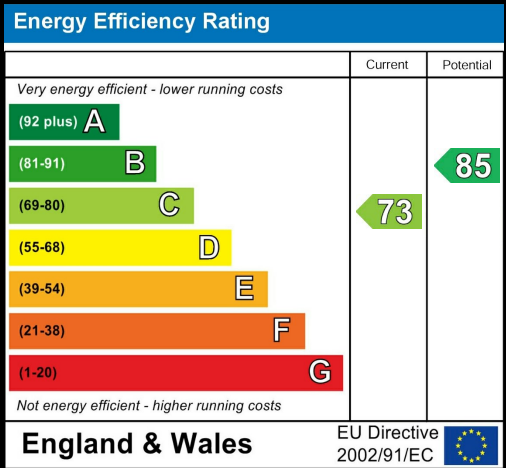


First Floor
Floor area 41.1 m² (442 sq.ft.)



Second Floor
Floor area 41.1 m² (442 sq.ft.)

TOTAL: 123.3 m² (1,327 sq.ft.)

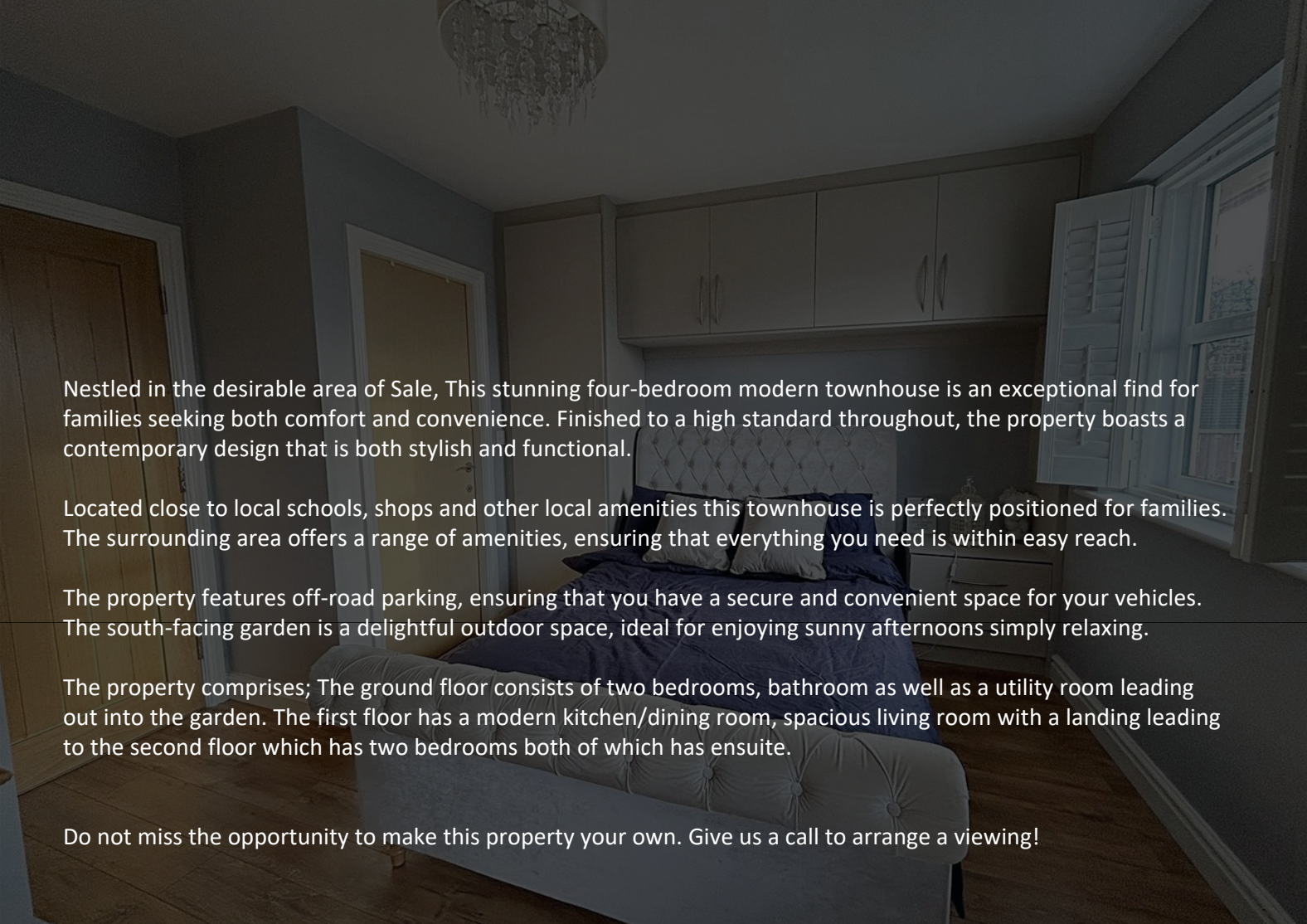


Ruskin Drive |
Offers Over £430,000



88 School Road | Sale | M33 7XB
t: 0161 973 4955
e: sale@hibberthomes.com
www.hibberthomes.com

Bedrooms 4	Bath 3	Reception 1	Parking here	Area 1327.00 sq ft	Type here



Nestled in the desirable area of Sale, This stunning four-bedroom modern townhouse is an exceptional find for families seeking both comfort and convenience. Finished to a high standard throughout, the property boasts a contemporary design that is both stylish and functional.

Located close to local schools, shops and other local amenities this townhouse is perfectly positioned for families. The surrounding area offers a range of amenities, ensuring that everything you need is within easy reach.

The property features off-road parking, ensuring that you have a secure and convenient space for your vehicles. The south-facing garden is a delightful outdoor space, ideal for enjoying sunny afternoons simply relaxing.

The property comprises; The ground floor consists of two bedrooms, bathroom as well as a utility room leading out into the garden. The first floor has a modern kitchen/dining room, spacious living room with a landing leading to the second floor which has two bedrooms both of which has ensuite.

Do not miss the opportunity to make this property your own. Give us a call to arrange a viewing!

