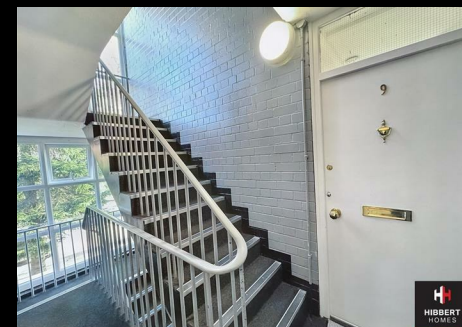
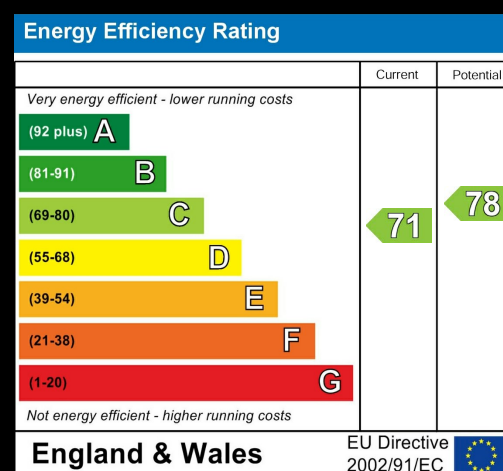


Floorplan

This floorplan is only for illustrative purposes and is not to scale. Measurements of rooms, doors, windows, and any items are approximate and no responsibility is taken for any error, omission or mis-statement. Icons of items such as bathroom suites are representations only and may not look like the real items. Made with Made Snappy 360.



Ashton Lane |
£1,100 PCM



88 School Road | Sale | M33 7XB
t: 0161 973 4955
e: sale@hibberthomes.com
www.hibberthomes.com

Bedrooms 2

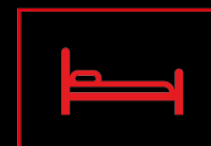
Bath 1

Reception 1

Parking here

Area
505.91 sq ft

Type here



A WELL PRESENTED TWO BEDROOM FIRST FLOOR APARTMENT WITH RESIDENTS' PARKING..... Conveniently situated on Ashton Lane, within catchment area of several excellent local schools and close walking distance of Ashton village and Sale town centre. Freshly re-decorated in neutral colours throughout and available immediately. Briefly comprising: Entrance hallway. Open-plan lounge / kitchen (new appliances included). Master double bedroom. Bathroom with white suite and shower over the bath. Second bedroom. Unfurnished. Council tax band - B. EPC Rating - C. AVAILABLE NOW. Minimum term 12 months. No pets.

