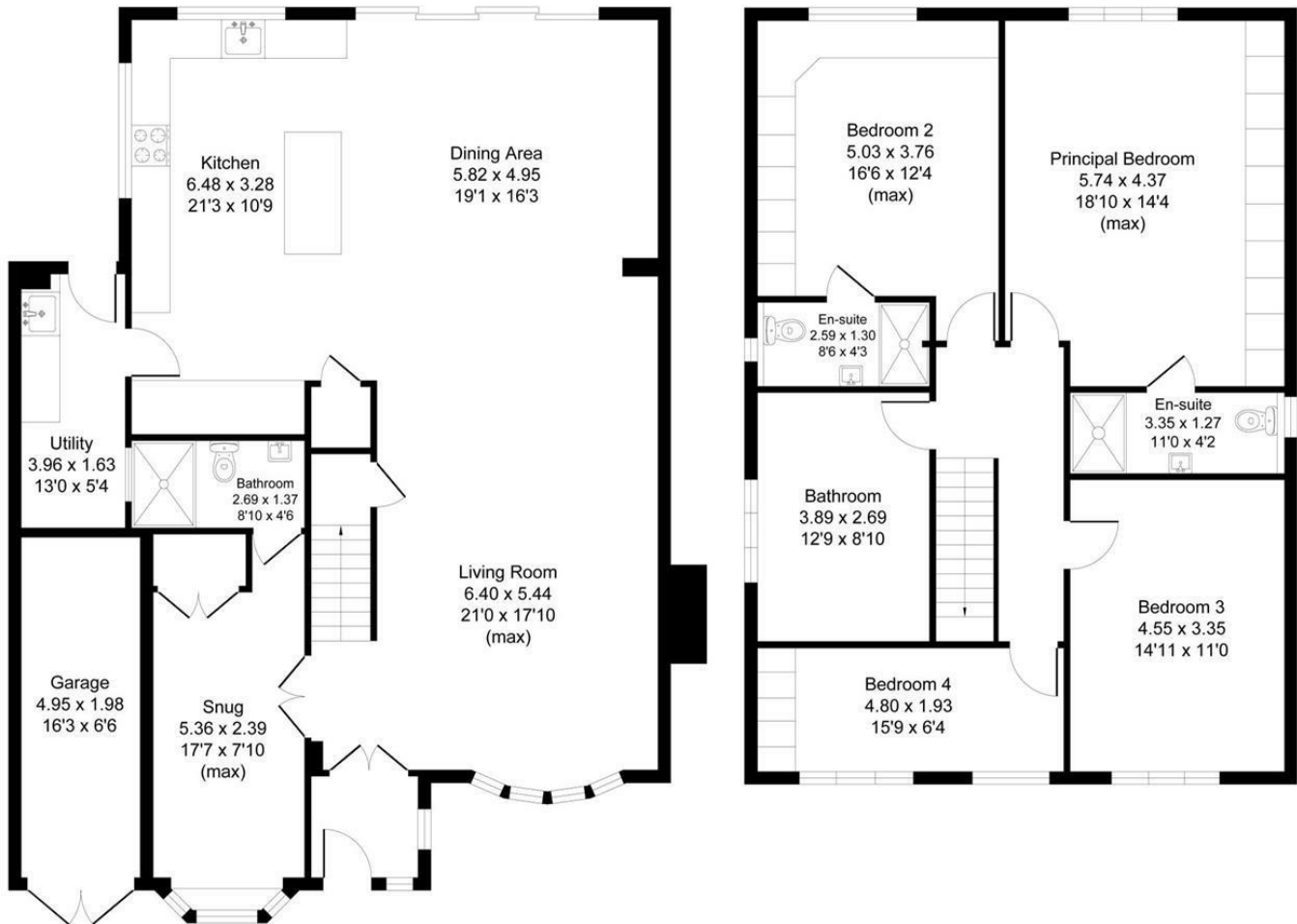


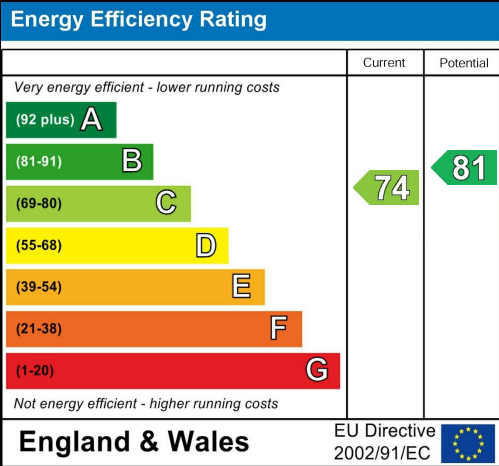
Approximate Gross Internal Floor Area = 223.8 sq m / 2410 sq ft



Ground Floor First Floor
Illustration for identification purposes only, measurements are approximate, not to scale.



The Crofters |
Asking Price £925,000





**HIBBERT
HOMES**

SALES & LETTINGS

88 School Road | Sale | M33 7XB
t:0161 973 4955
e: sale@hibberthomes.com
www.hibberthomes.com

Bedrooms 4

Bath 4


Reception 2

Parking here

Area
2410.00 sq ft


Type here














- Stunning Four Bedroom Detached Family Home
- Smart Zone Controlled Wet Underfloor Heating
- Cul De Sac Location
- Stunning Oak Staircase
- Viewing Highly Recommended
- Finished To A High Standard Throughout
- Fitted Wardrobes With Sensor Lights
- Off Road Parking For Mutiple Cars
- Porcelain Wood Effect Flooring Throughtot
- Landscaped Rear Garden

** NO CHAIN **

Nestled in the desirable area of The Crofters. This exquisite four-bedroom detached family home is a true gem, finished to an exceptionally high standard throughout. Situated in a peaceful cul-de-sac, this home offers the convenience of off-road parking for multiple vehicles, ensuring ease and accessibility for family and guests alike. The beautifully landscaped garden to the rear provides a serene outdoor space, perfect for relaxation or entertaining. The heart of the home is undoubtedly the stunning open-plan living, dining, and kitchen area, which features impressive bi-fold doors that seamlessly connect the indoor space with the outdoor garden. This design not only enhances the flow of natural light but also creates an inviting atmosphere for family gatherings and social occasions. The property boasts a premium kitchen, equipped with top-of-the-range Neff appliances and elegant quartz worktops, complemented by built-in lighting finished with porcelain wood effect tiles throughout that adds a touch of sophistication. The downstairs as consists of utility toom with space for white goods and a snug which has a multi purposes and there is a downstairs bathroom.

As we move up to the first floor the landing has plenty of natural light coming through due to sun tunnels fitted. There are four bedrooms in total including three double bedrooms and one single bedroom all of which have fitted wardrobes. Two of the bedrooms have ensuite's bathrooms. The main bathroom has a four piece suite with porcelain tiles fitted floor to ceiling. The property has been finished to an high standard throughout with plenty of amazing features including smart zone controlled we underfloor heating, Electric fireplace, Mood and sensor lights in bathrooms, Central heating with smart TRV and many more.

Viewing this property is highly recommended, as it truly must be seen to appreciate its full potential.

