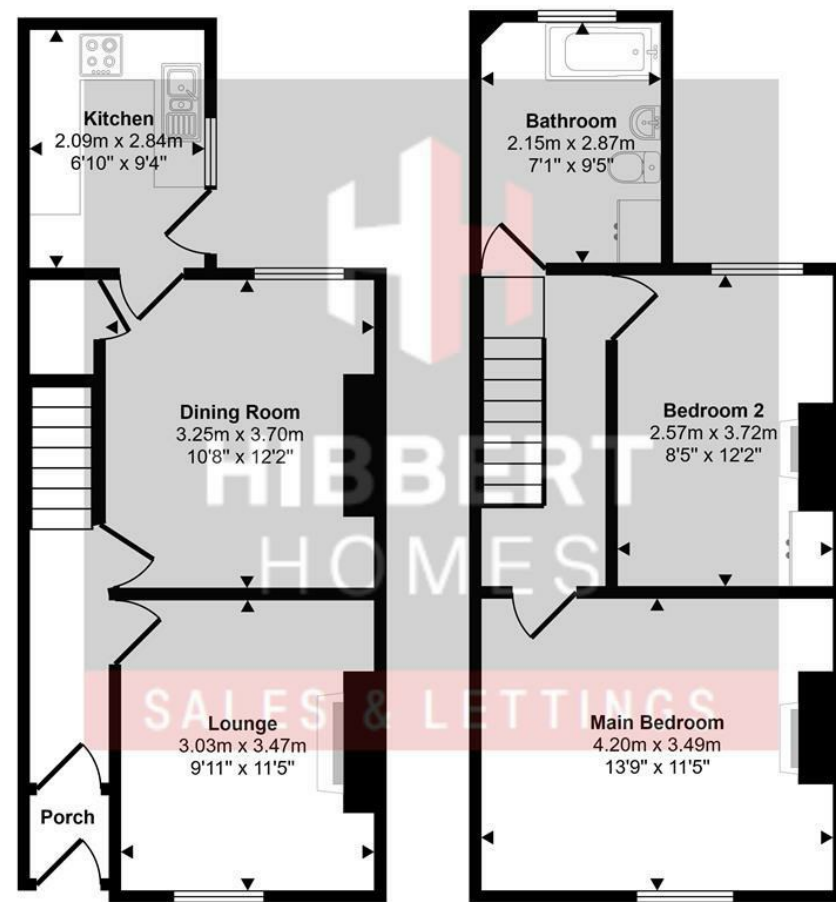
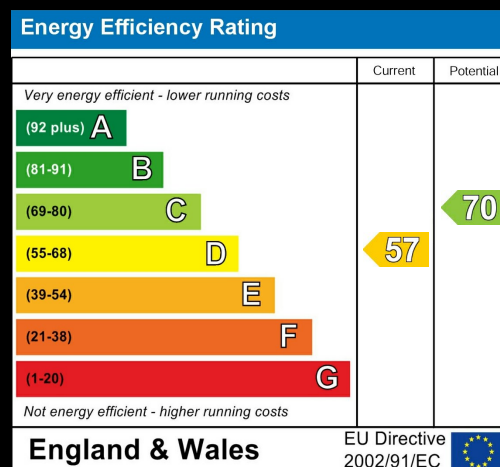


Approx Gross Internal Area  
74 sq m / 793 sq ft



This floorplan is only for illustrative purposes and is not to scale. Measurements of rooms, doors, windows, and any items are approximate and no responsibility is taken for any error, omission or mis-statement. Icons of items such as bathroom suites are representations only and may not look like the real items. Made with Made Snappy 360.



Waverley Road |  
Asking Price £325,000



SALES & LETTINGS

88 School Road | Sale | M33 7XB  
t: 0161 973 4955  
e: sale@hibberthomes.com  
www.hibberthomes.com

Bedrooms 2

Bath 1

Reception 2

Parking here

Area  
793.00 sq ft

No Chain





- No Onward Chain
- Close To Sale Town Centre
- West Facing Courtyard Garden
- Two Reception Rooms
- Two Double Bedroom
- Walking Distance To The Metrolink
- Freehold
- Ideal For First Time Buyers

Situated within the charming town of Sale, This delightful two-bedroom mid-terrace home presents an excellent opportunity for first-time buyers. Spanning an inviting 793 square feet, this period property boasts of plenty of original features.

One of the standout features is its prime location. Situated in close proximity to the Metro link, commuting to nearby areas is both easy and efficient. Additionally, Sale Town Centre is just a stone's throw away, offering a variety of shops, restaurants, and local amenities to cater to your everyday needs. The Property comprises; Entrance hall, living room, dining room and kitchen. The first floor has a landing two double bedrooms and bathroom. External the property has a courtyard garden.

This property is not only a wonderful place to call home but also an ideal investment for those looking to enter the housing market. Viewing is highly recommended to fully appreciate the charm and potential this home has to offer.

