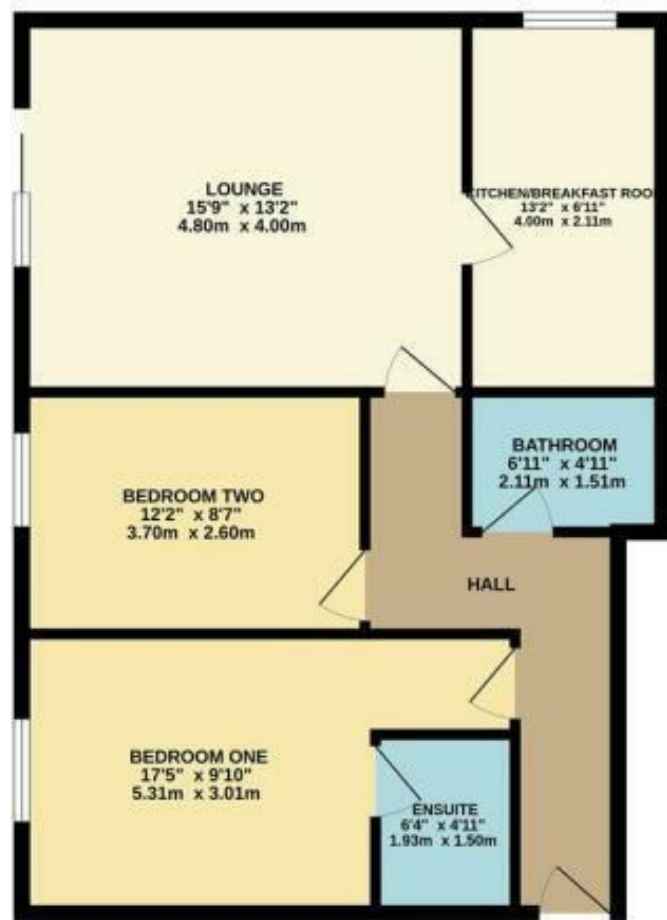
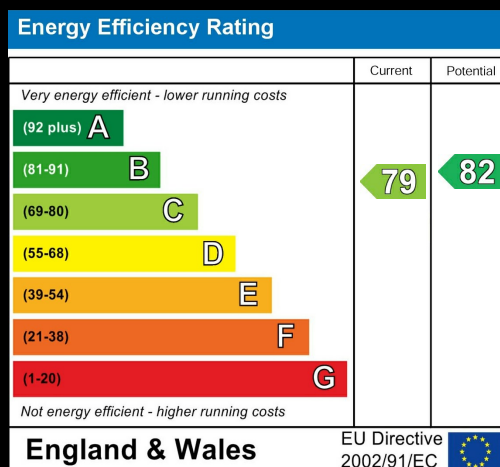


GROUND FLOOR
694 sq.ft. (64.4 sq.m.) approx.



TOTAL FLOOR AREA: 884 sq.ft. (81.4 sq.m.) approx.
Measurements are approximate. Not to scale. Not for planning purposes only.
Made with Metaphor 02/2024



Northenden Road |
Price Guide £230,000

Bedrooms 2

Bath 2

Reception 1

Parking here

Area
sq ft

Type here



88 School Road | Sale | M33 7XB
t: 0161 973 4955
e: sale@hibberthomes.com
www.hibberthomes.com

- Two Double Bedroom Apartment
- Off Road Parking
- Lift Access
- EPC Grade C
- Ideal Investment Opportunity

- Master Bedroom With An Ensuite
- Located Within Walking Distance To Sale Town Centre
- Juliet Balcony From The Lounge
- Close To The Metro Link
- Perfect For A First Time Buyer

This first floor two double bedroom apartment located in popular Holmdale development on Northenden Road which is walking distance into Sale Town Centre & Metro link Station. The property is set within a small development with well-tended communal gardens, Large lounge which benefits from a Juliette balcony overlooking the lawned gardens. Good size separate kitchen with appliances, two double bedrooms with built in wardrobes, master having an Ensuite shower room & modern three-piece bathroom suite. The development has a lift & ample off-road parking. Please note there is no gas in this development, it is all electric. No pets allowed.

