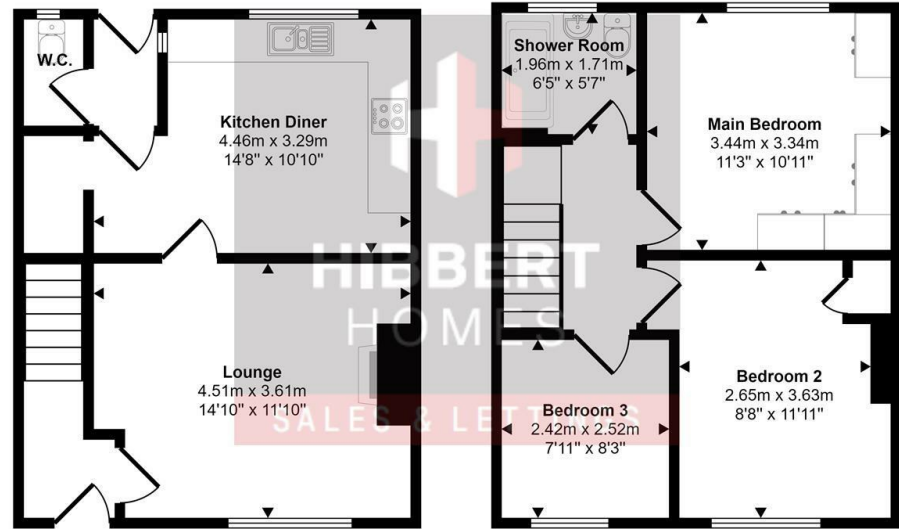


Approx Gross Internal Area
78 sq m / 837 sq ft



This floorplan is only for illustrative purposes and is not to scale. Measurements of rooms, doors, windows, and any items are approximate and no responsibility is taken for any error, omission or mis-statement. Icons of items such as bathroom suites are representations only and may not look like the real items. Made with Made Snappy 360.



Energy Efficiency Rating		Current	Potential
Very energy efficient - lower running costs			
(92 plus) A			
(81-91) B			
(69-80) C			
(55-68) D			
(39-54) E			
(21-38) F			
(1-20) G			
Not energy efficient - higher running costs			
England & Wales	EU Directive 2002/91/EC		



Greenbank Road |
Offers In The Region Of
£350,000

Bedrooms 3

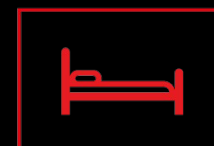
Bath 1

Reception 1

Parking here

Area
837.00 sq ft

Type here



HIBBERT
HOMES

SALES & LETTINGS

88 School Road | Sale | M33 7XB
t: 0161 973 4955
e: sale@hibberthomes.com
www.hibberthomes.com

- No Chain
- Ideal For A First Time Buyer
- Viewing Highly Recommended
- Modern Kitchen

- Walking Distance To Ashton On Mersey Village
- Enclosed Rear Garden
- Close To The Local Schools
- Downstairs W.C

Nestled on Greenbank Road in this charming three bedroom mid terrace property is a perfect opportunity for first-time buyers. Situated within walking distance to Ashton On Mersey Village, this property offers easy access to local amenities and schools, making it an ideal location for couples or families.

The property comprises; Entrance Hall, living room, dining room/kitchen, downstairs W.C. The First Floor has three bedrooms and a shower room. To the front of the property there is a front garden with potential for a driveway and to the rear for the property there is a patio area, lawn and fenced boundaries.

The convenience of being close to motorway links ensures that commuting or exploring the surrounding areas is a breeze. A viewing is highly recommended to truly appreciate the potential and warmth this property has to offer.

