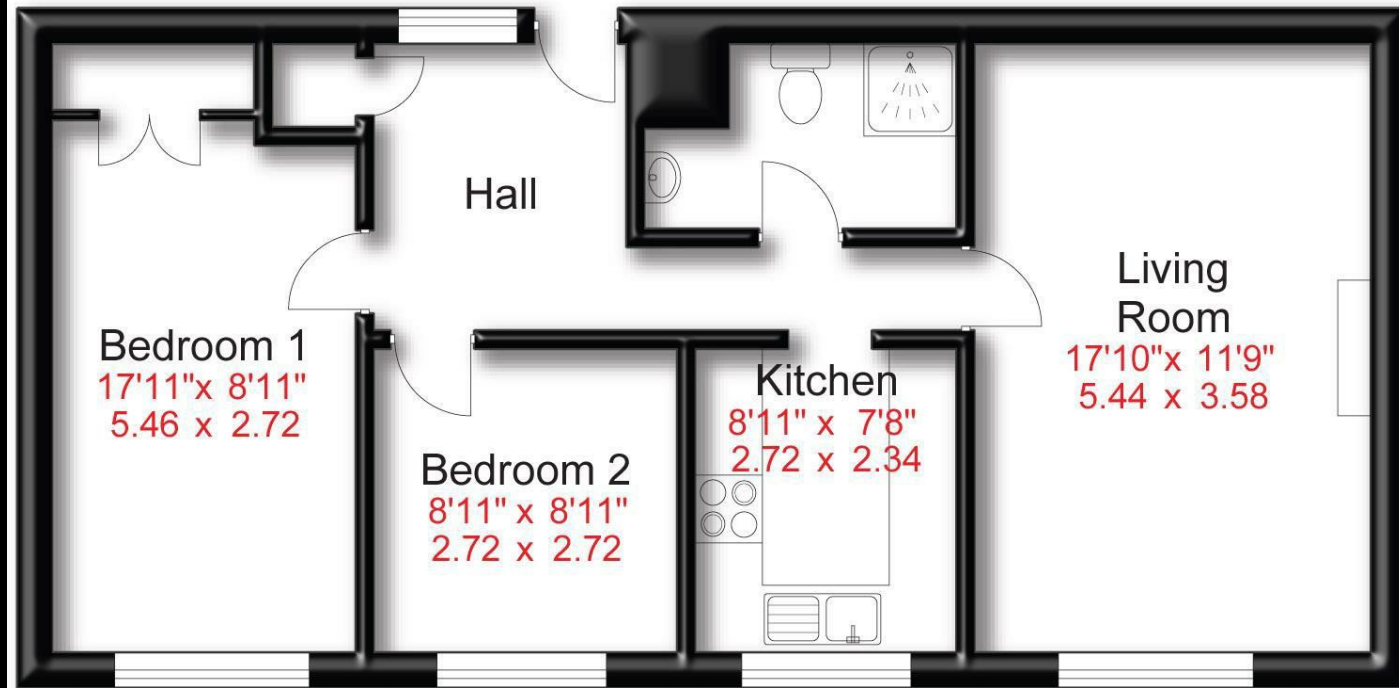


Approx Gross Floor Area = 695 Sq. Feet



Energy Efficiency Rating		Current	Potential
Very energy efficient - lower running costs			
(92 plus) A			
(81-91) B			
(69-80) C		69	78
(55-68) D			
(39-54) E			
(21-38) F			
(1-20) G			
Not energy efficient - higher running costs			
England & Wales	EU Directive 2002/91/EC		



Temple Road |  
Offers In The Region Of  
£200,000



88 School Road | Sale | M33 7XB  
t: 0161 973 4955  
e: sale@hibberthomes.com  
www.hibberthomes.com

SALES & LETTINGS

Bedrooms 2

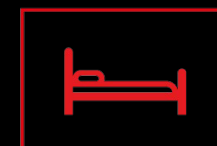
Bath 1

Reception 1

Parking here

Area  
695.00 sq ft

Type here





- No Chain
- Ideal For A First Time Buyer
- Great Location
- Two Bedroom Apartment
- Close To Shops

- Buy To Let Opportunity
- Garage With The Apartment
- Close To The Metro Link
- Parking
- EPC Grade C

**\*\* NO CHAIN \*\***

A fantastic opportunity to purchase this two bedroom apartment located in the popular area of Sale Moor Village. The property is ideal for a first time buyer or a buy to let investor as there is plenty of amenities including shops bars, metrolink. The property comes with a garage and parking and a viewing is highly recommended. The property comprises; Entrance hall, living room/dining room, kitchen, two bedrooms and a bathroom. The external there is parking to front of the development and the garages are to the side.

