

LOCAL

# Blackfriars

SALFORD

*Plans*

---





# Masterplan



- |                       |                 |
|-----------------------|-----------------|
| 1 Black Friar Pub     | 6 Gym/studio    |
| 2 Courtyard           | 7 Cinema        |
| 3 Tower One Reception | 8 Café/bistro   |
| 4 Tower Two Reception | 9 Energy Centre |
| 5 Laundrette          | 10 Car Park     |



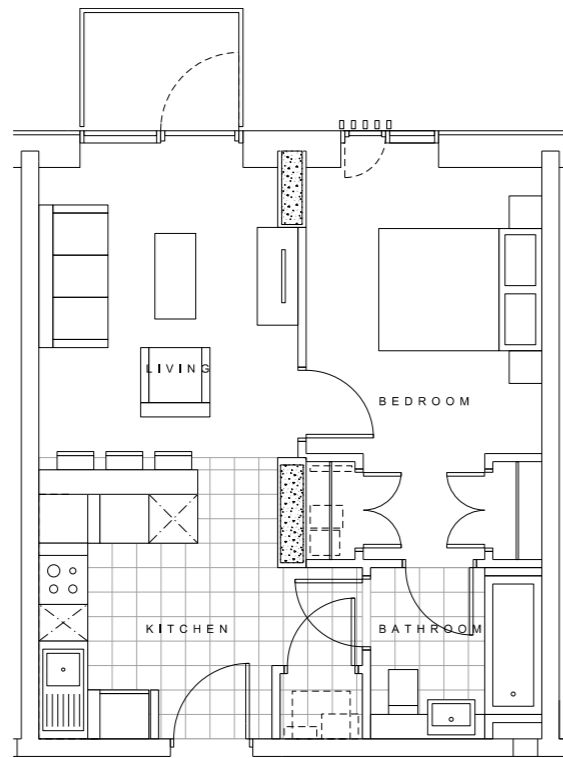




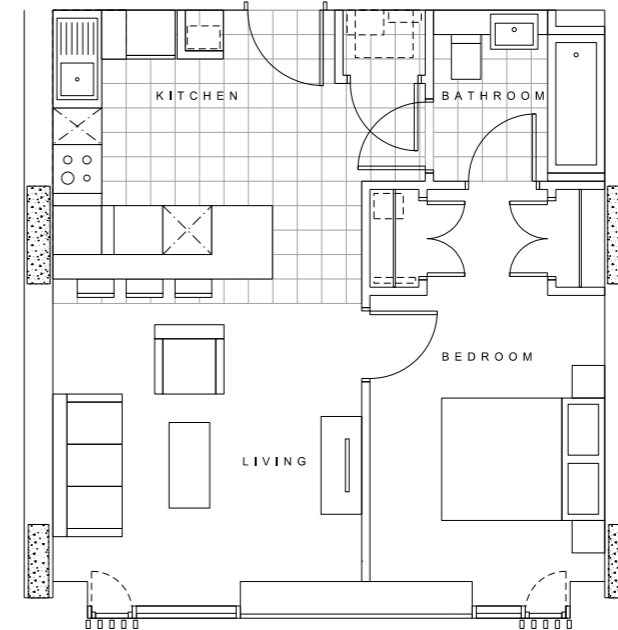
# One Bed Apartments

# One Bed Apartments

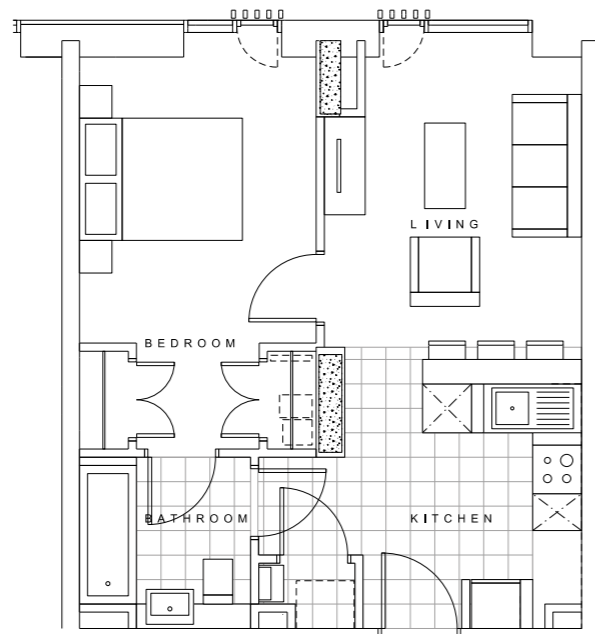
One Bed (Type C1)



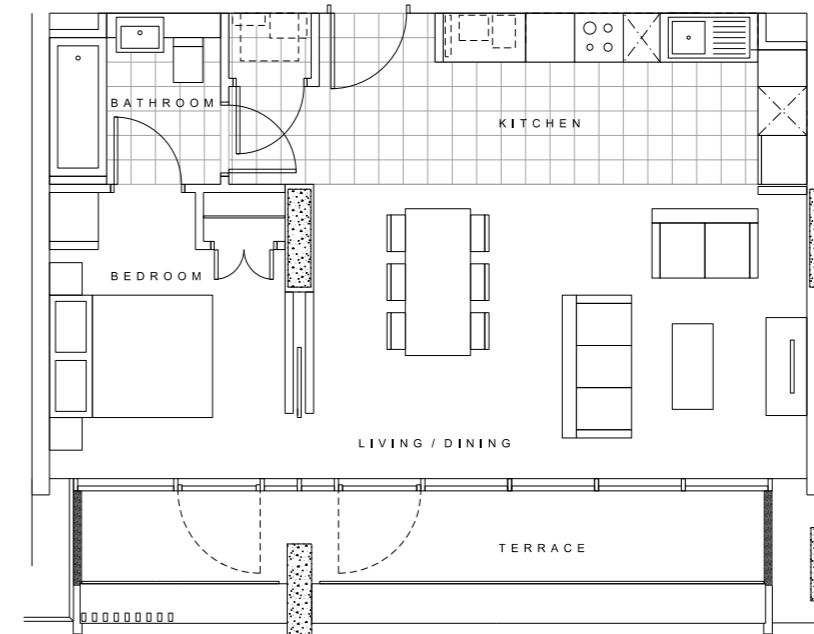
One Bed (Type D1)



One Bed (Type C2)

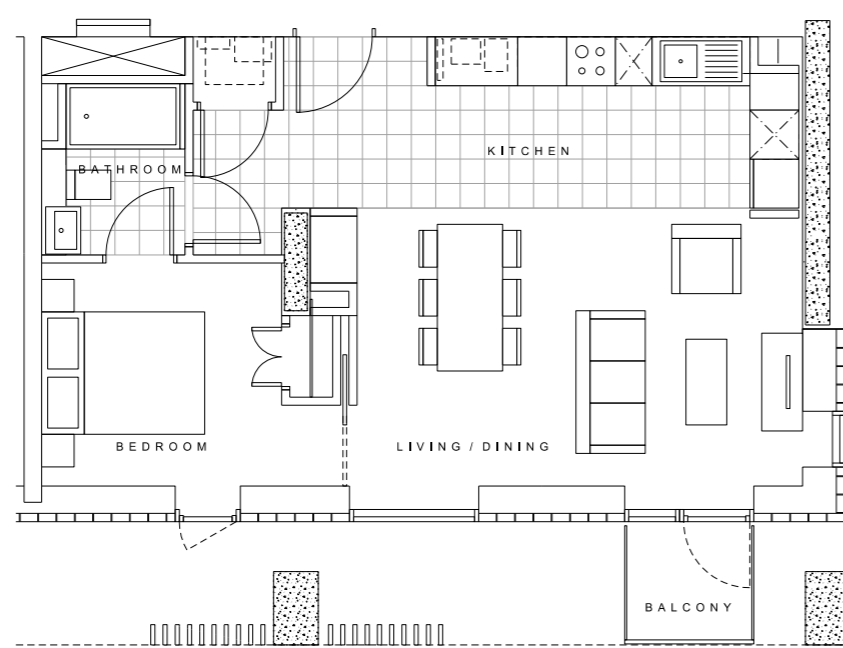


One Bed - Wide (Type E1)

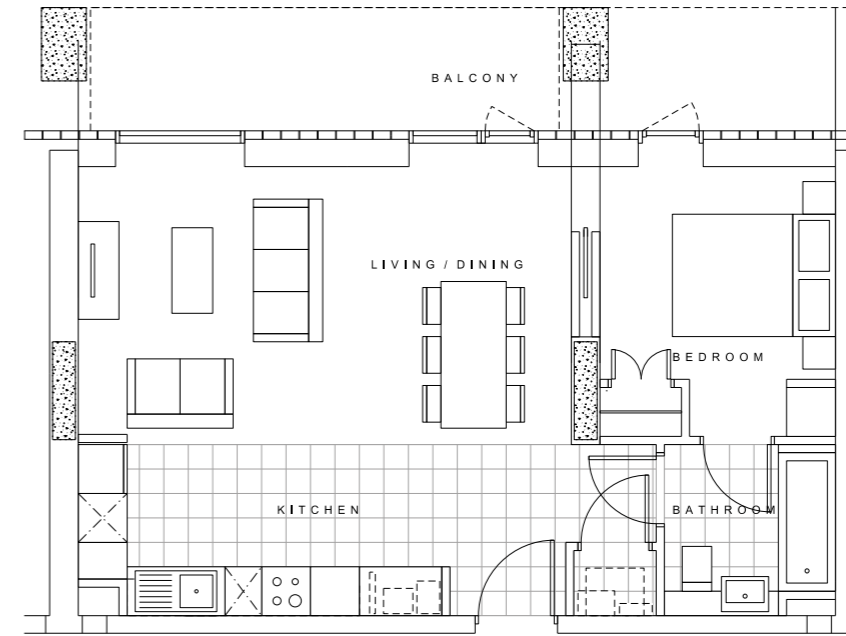


# One Bed Apartments

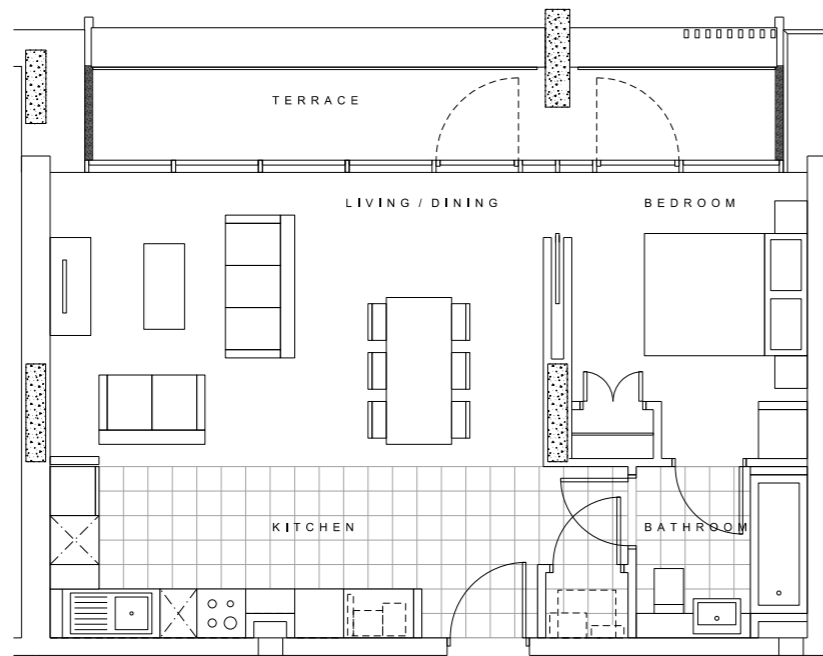
One Bed – Corner  
(Type E2)



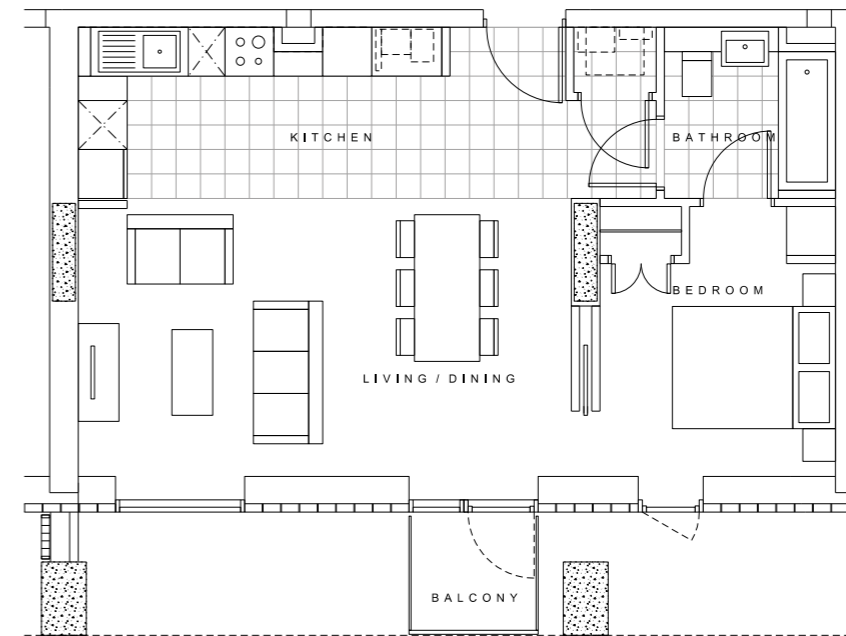
One Bed – Wide  
(Type E4)



One Bed – Wide  
(Type E3)

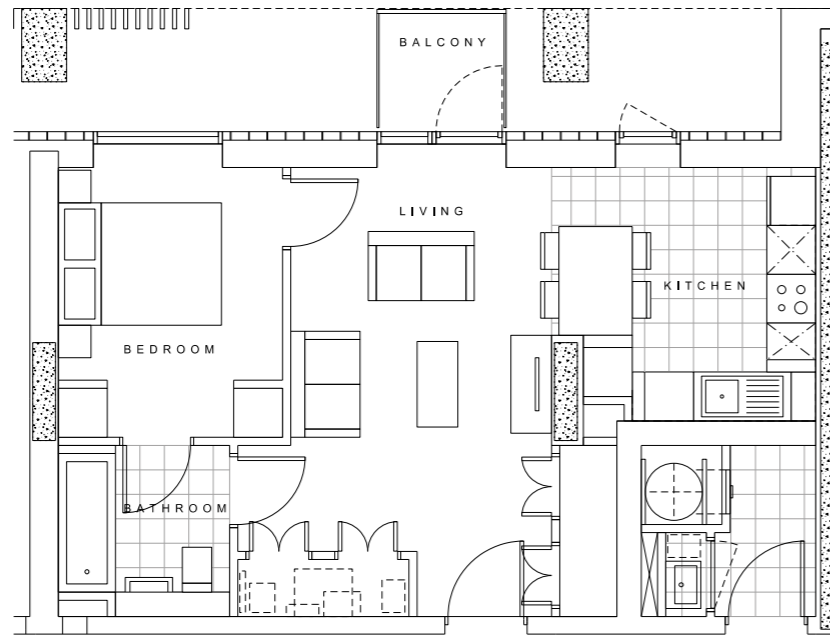


One Bed (Type E5)

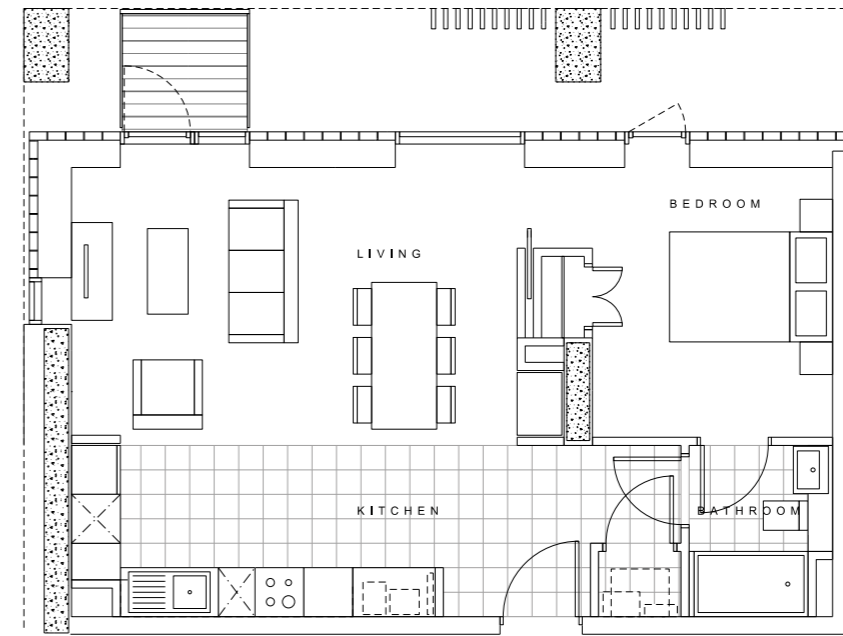


# One Bed Apartments

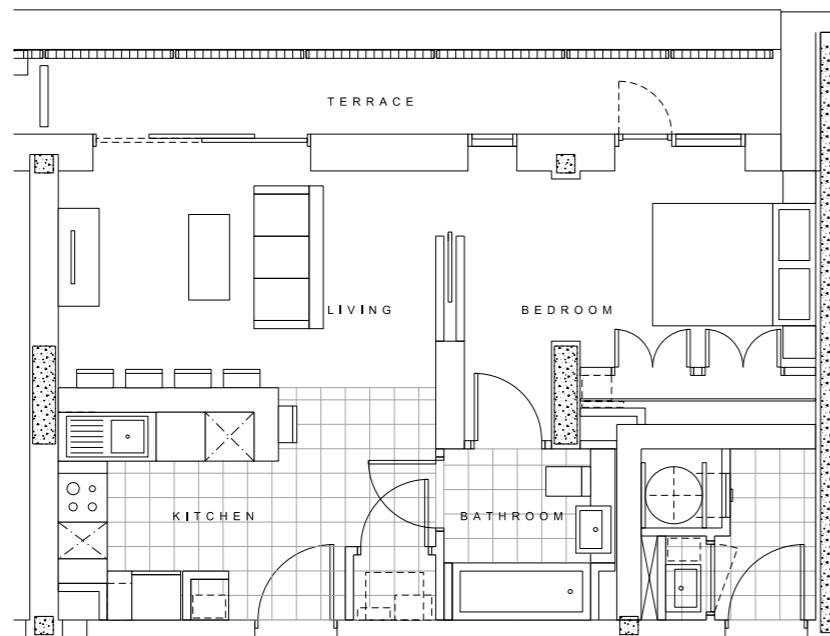
One Bed (Type E6)



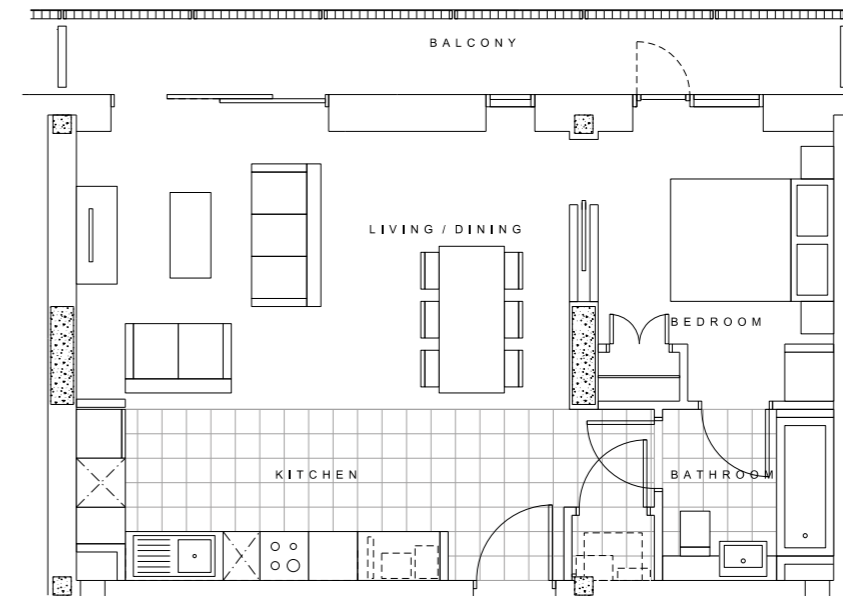
One Bed (Type E8)



One Bed - Wide (Type E7)

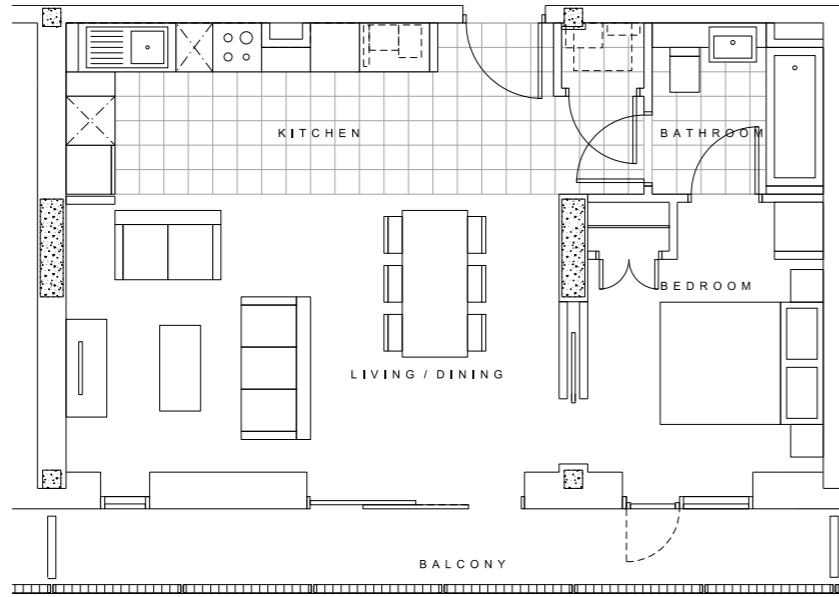


One Bed - Wide (Type E9)

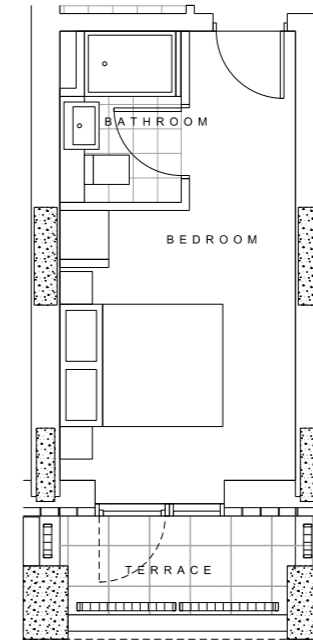


# One Bed Apartments

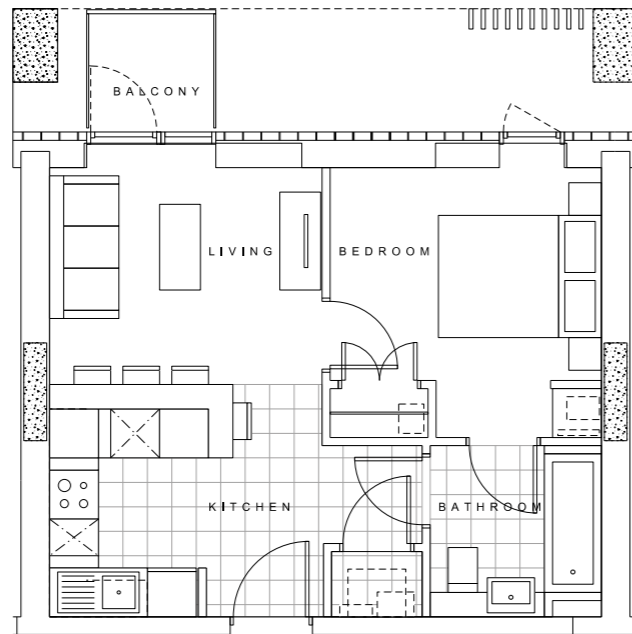
One Bed – Wide  
(Type E10)



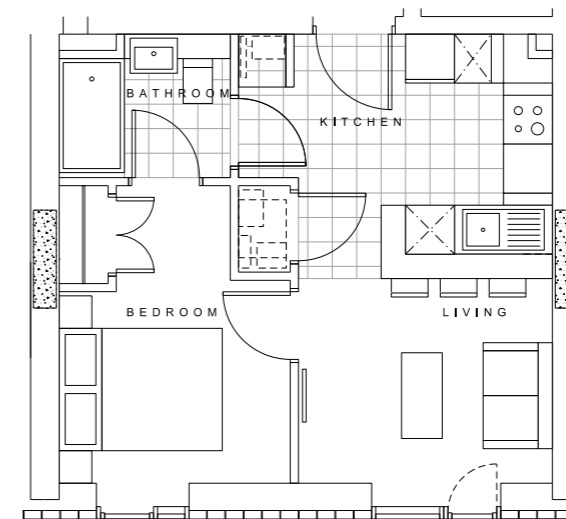
One Bed – Guest Room  
(Type K1)



One Bed (Type F1)

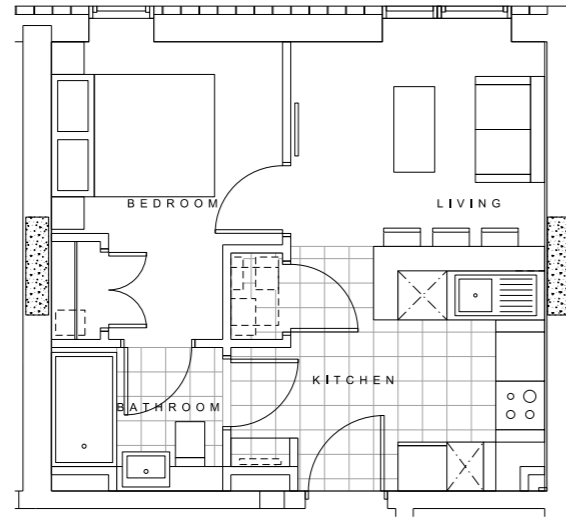


One Bed (Type L1)

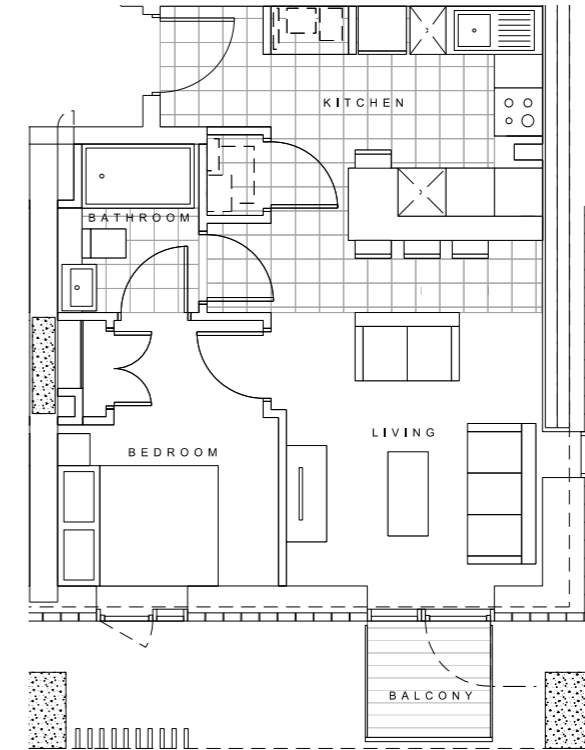


# One Bed Apartments

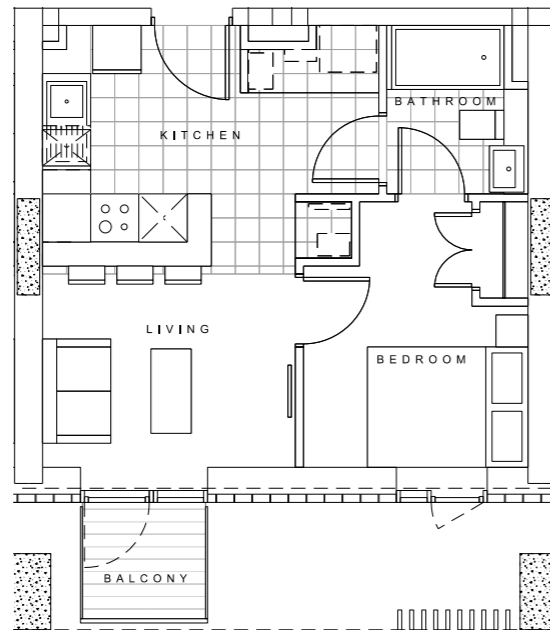
One Bed (Type L2)



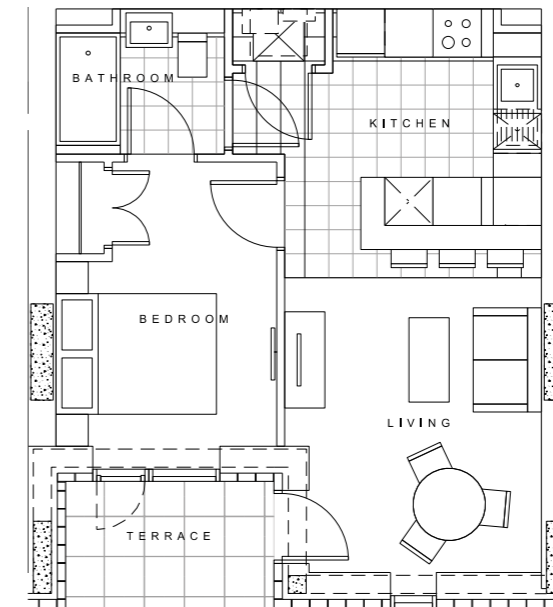
One Bed (Type L4)



One Bed (Type L3)



One Bed (Type M1)



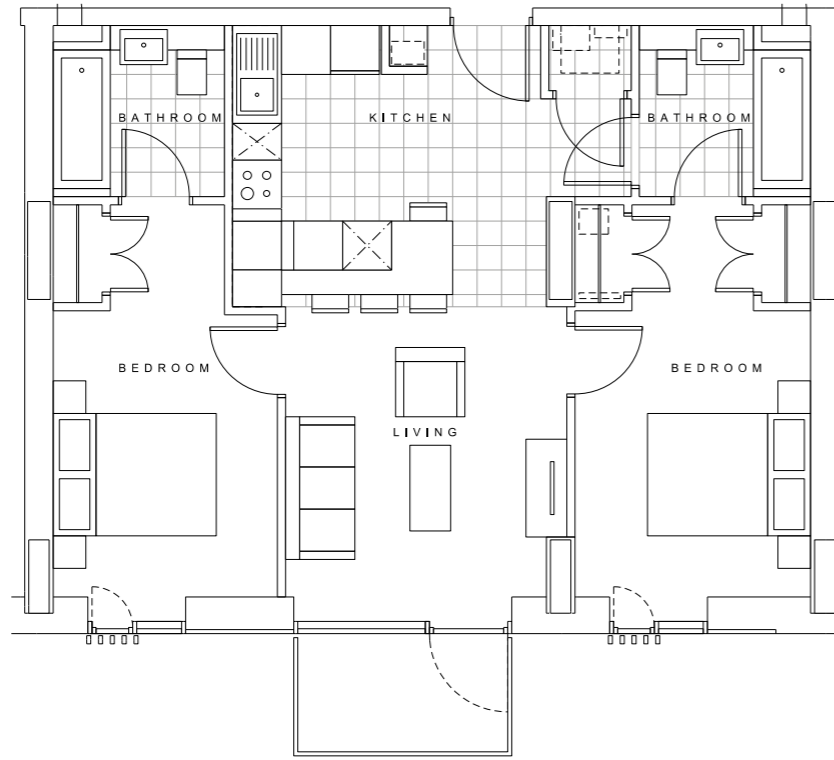




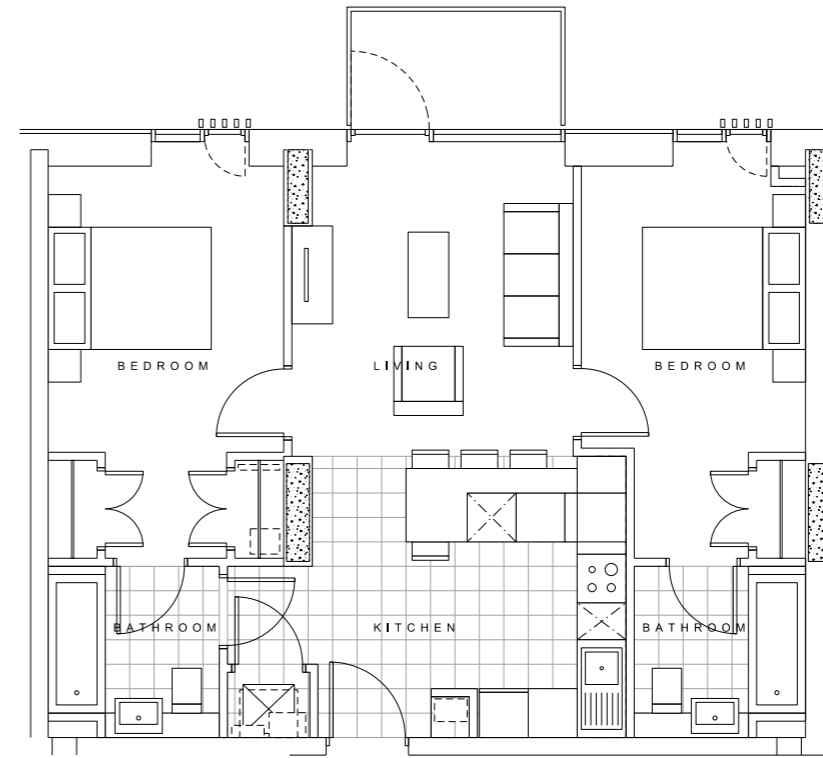
# Two Bed Apartments

# Two Bed Apartments

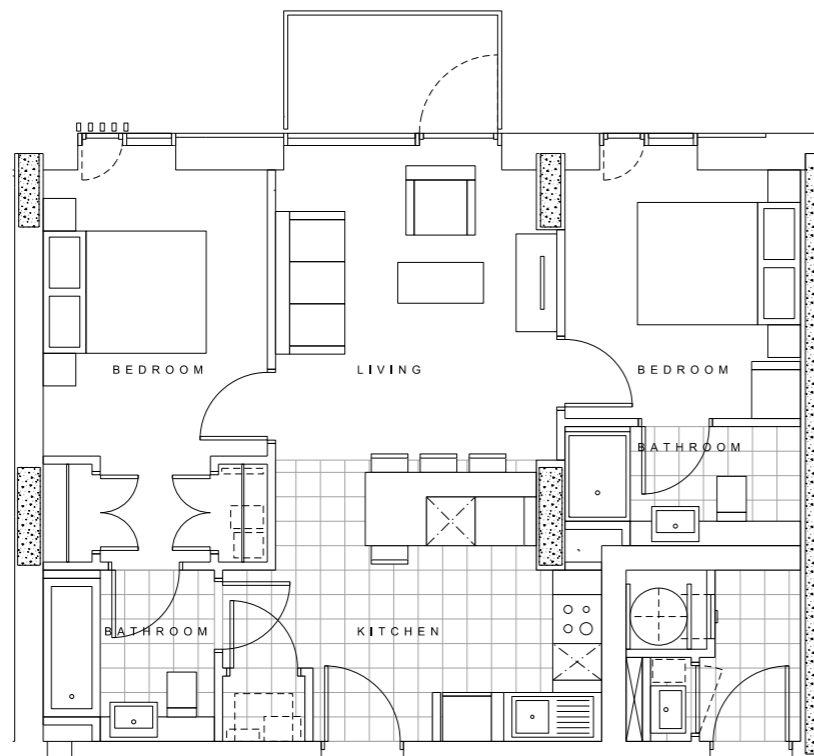
Two Bed (Type A1)



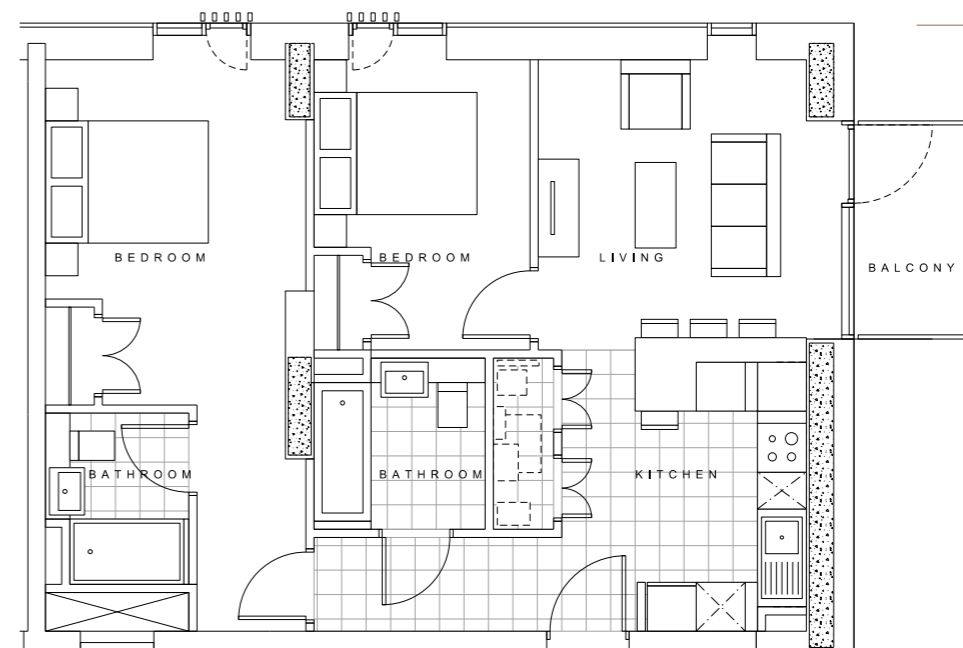
Two Bed (Type A3)



Two Bed (Type A2)



Two Bed (Type B1)



# Typical Two Bed Apartment

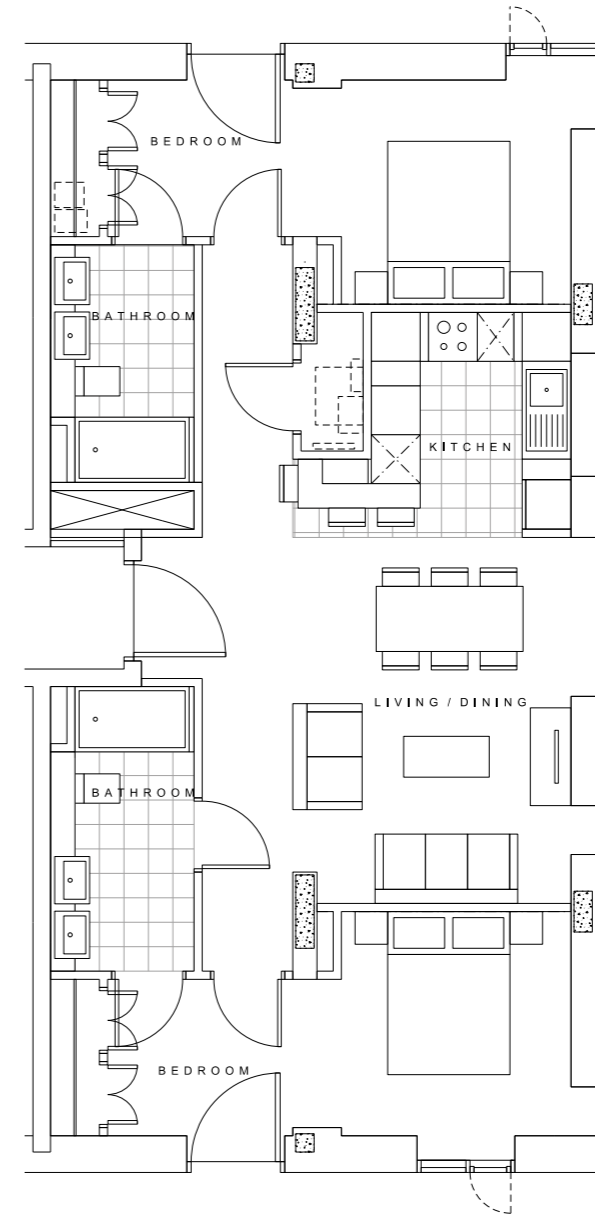
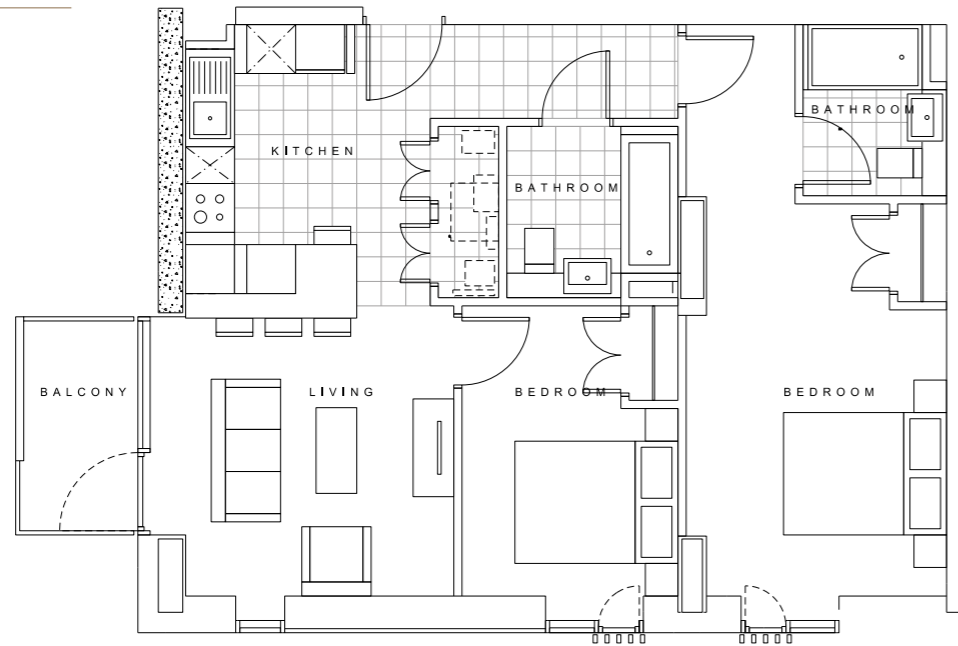
---





# Two Bed Apartments

Two Bed (Type B2)



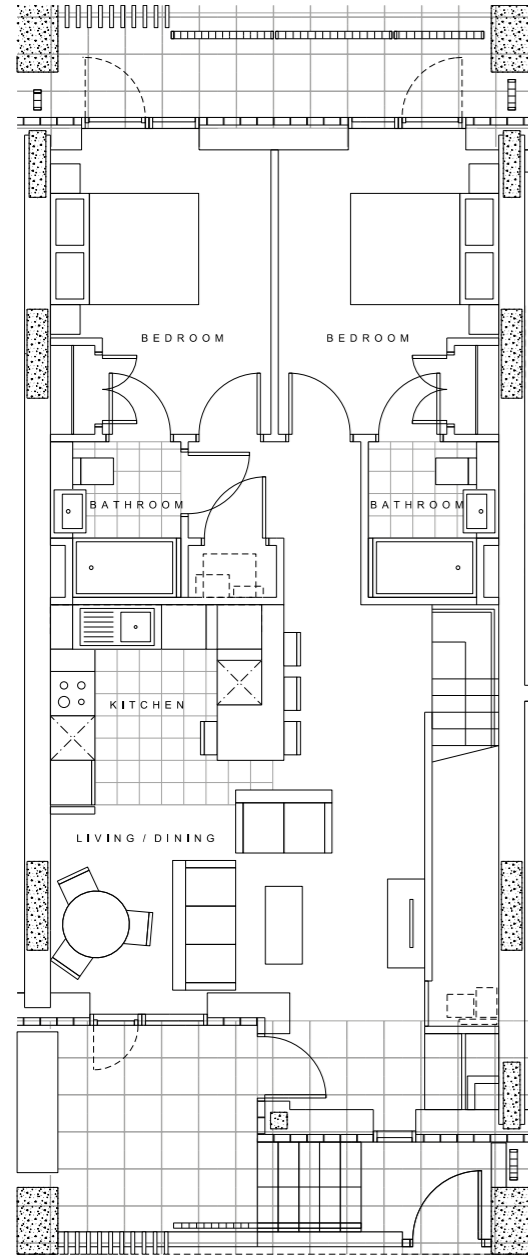
Two Bed - Large  
(Type G1)



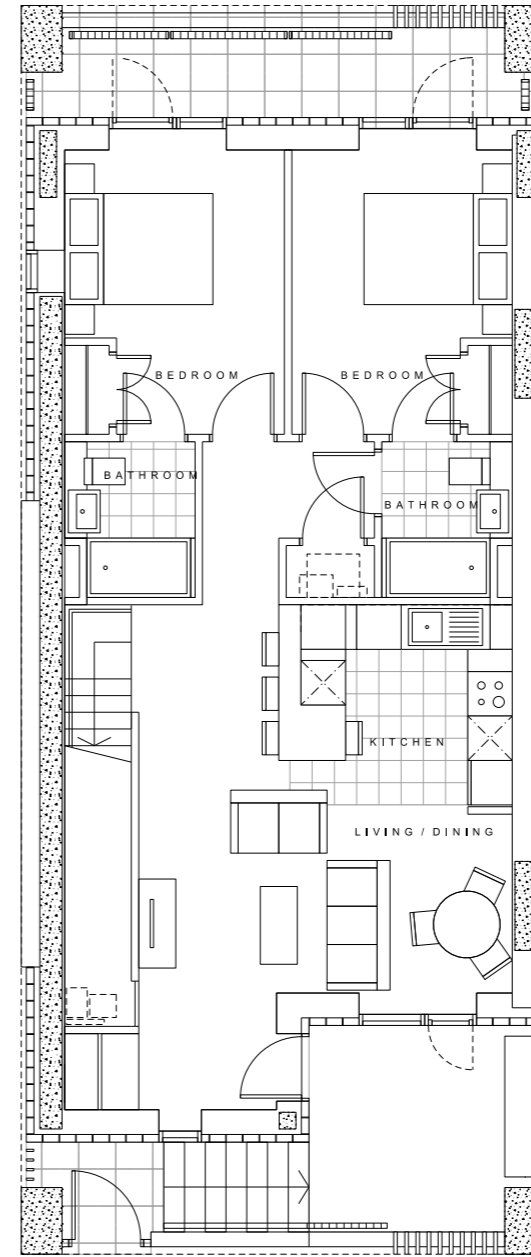
# Three Bed Apartments

# Three Bed Apartments

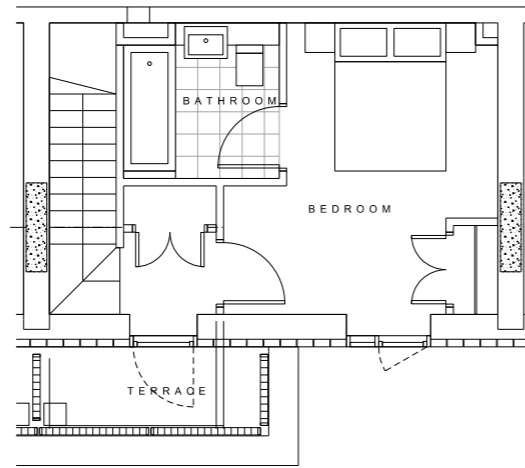
Three Bed – Townhouse  
Ground Floor (Type H1)



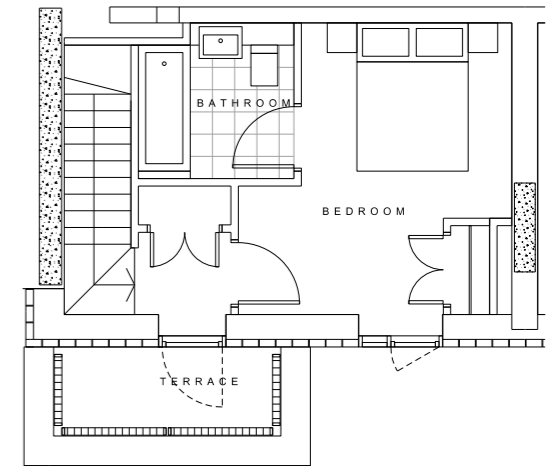
Three Bed – Townhouse  
Ground Floor (Type H3)



Three Bed – Townhouse  
First Floor (Type H1)



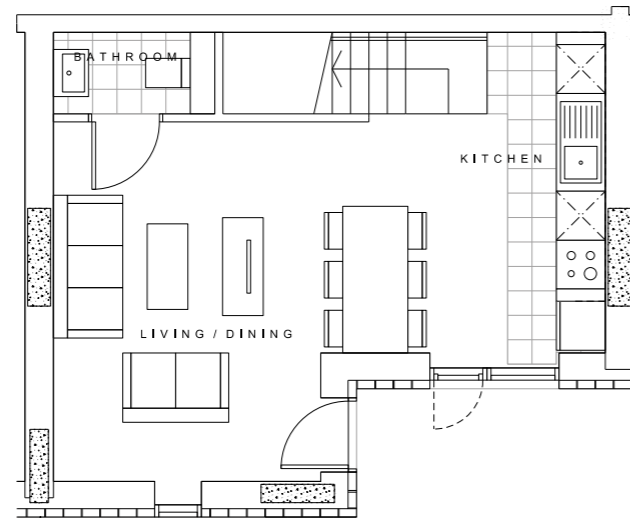
Three Bed – Townhouse  
First Floor (Type H3)



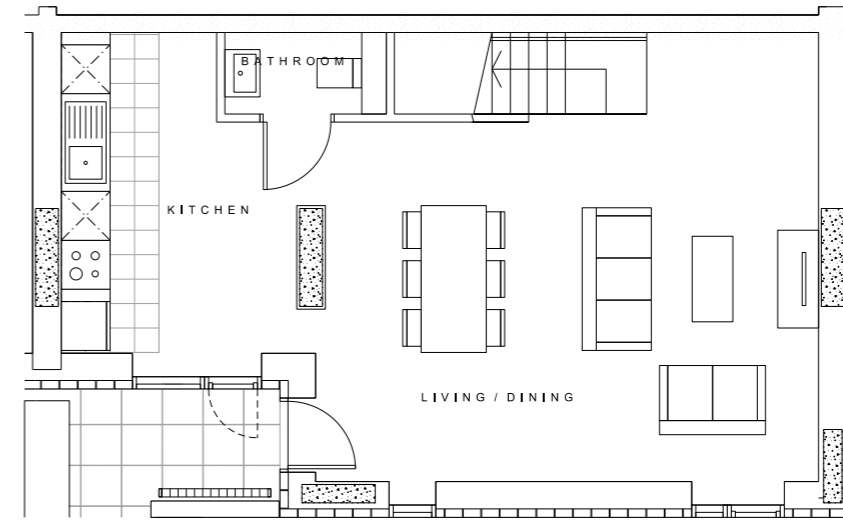


# Three Bed Apartments

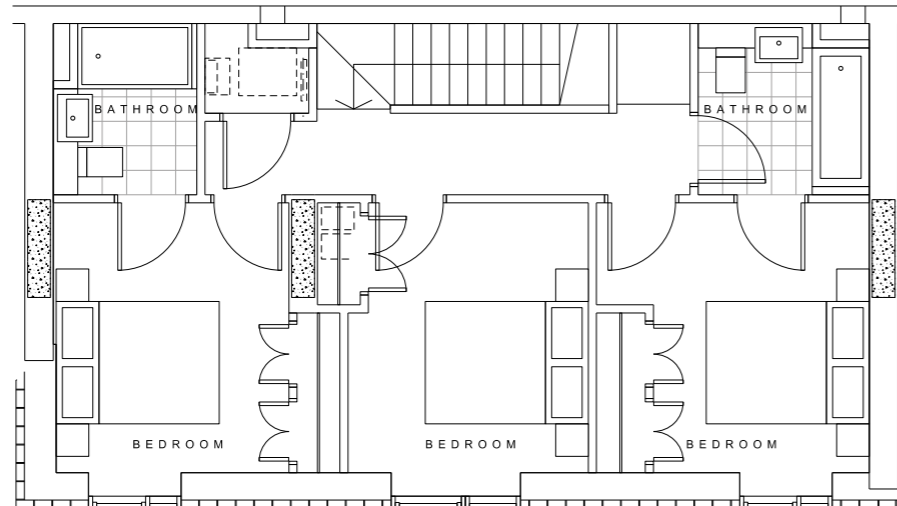
Three Bed – Ground Floor  
(Type J1)



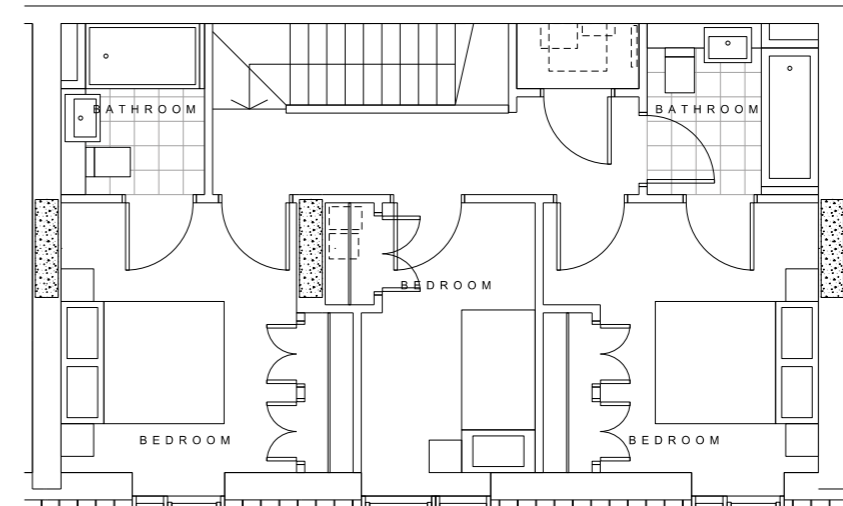
Three Bed – Ground Floor  
(Type J2)



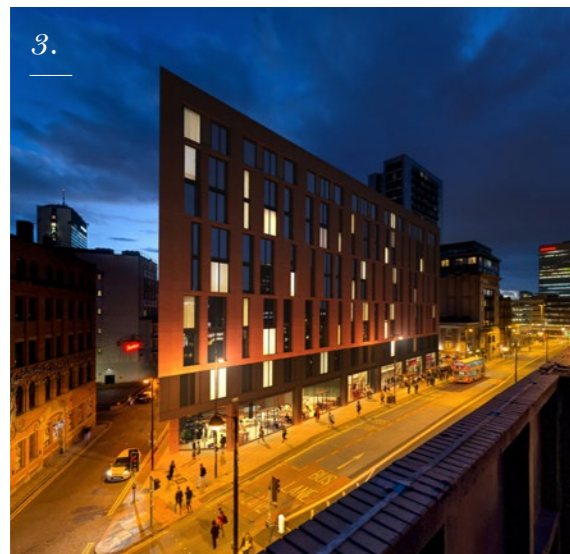
Three Bed – First Floor  
(Type J1)



Three Bed – First Floor  
(Type J2)



# Our Track Record



## 5plus architects

5plus is an award-winning firm of architects with an enviable track record of high-quality residential design. Our skilled, experienced, 70-strong team is spread across two locations in London and Manchester.

5plus has delivered several schemes in Manchester, with mixed-use environments and placemaking as the guiding principles. Our creative studio combines architecture, interior design and graphic design to create exceptional living environments.

[www.5plusarchitects.com](http://www.5plusarchitects.com)

## SALBOY

Salboy Limited is a privately-owned equity-investment and property-development company. Owned and managed by Simon Ismail alongside Fred Done, the owner of Betfred.

Salboy Limited is currently investing extensively in Manchester's ongoing regeneration in the wake of the UK Government's Northern Powerhouse initiative. The company also lends and develops throughout the UK, creating thousands of new homes each year.

[www.salboy.co.uk](http://www.salboy.co.uk)

Salboy Limited's current schemes include:

1. *Astley Point, Wigan*
2. *CITU NQ, Manchester*
3. *2 St Peter's Square, Manchester*
4. *Carlton Gate, Putney*

## DOMIS

Domis Construction Limited complements Salboy Limited's innovative approach by providing a vast array of in-house services, offering greater flexibility and certainty to the build process while allowing us to maintain the very highest standards and quality-of-finish.

Domis provides unparalleled construction expertise and is achieving new service standards across the development market. With more than 10,000 units built and a combined experience of over 100 years, the principles of Domis possess all the skills required to deliver luxury residential developments such as Local Blackfriars.

[www.domispropertygroup.co.uk](http://www.domispropertygroup.co.uk)





## Contact

---

*T: (01925) 852-278*

*E: [info@salboy.co.uk](mailto:info@salboy.co.uk)*

*[www.localblackfriars.uk](http://www.localblackfriars.uk)*

LOCAL

# Blackfriars

SALFORD

MISREPRESENTATION ACT 1967. Salboy International for themselves and for the vendors or lessors of these properties whose agents they are, give notice that:  
i) The particulars are set out as a general outline only for the guidance of intending purchasers or lessees and do not constitute, nor constitute part of an offer or contract. ii) All descriptions, references to condition and necessary permission.

Designed and produced by 90degrees Design & Marketing Ltd. August 2017. Tel 0161 833 1890