



MODERN
PLUG & PLAY
OFFICE
SPACE

950 SQ FT
(84 SQ M)
AVAILABLE
NOW

TWENTY
GROSVENOR
PLACE

PLUG & PLAY OFFICE SPACE 950 SQ FT GROUND FLOOR NEWLY REFURBISHED

20 Grosvenor Place is an elegant office building with a large newly redecorated reception area. The available ground floor has been refurbished and fully fitted out to provide 10 desks, a meeting room, breakout area. The office also benefits its own private outside space and fibre connectivity.



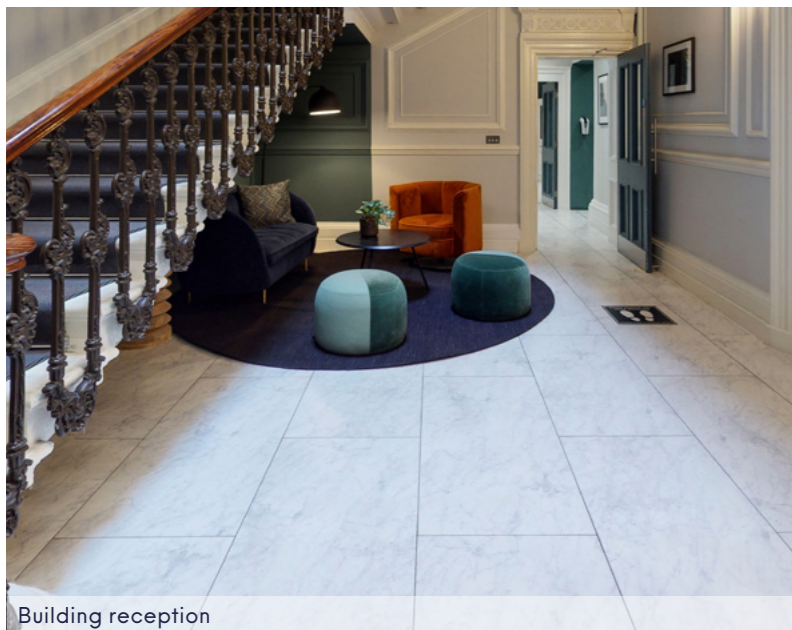
Building reception



Ground floor meeting room



Ground floor office



Building reception

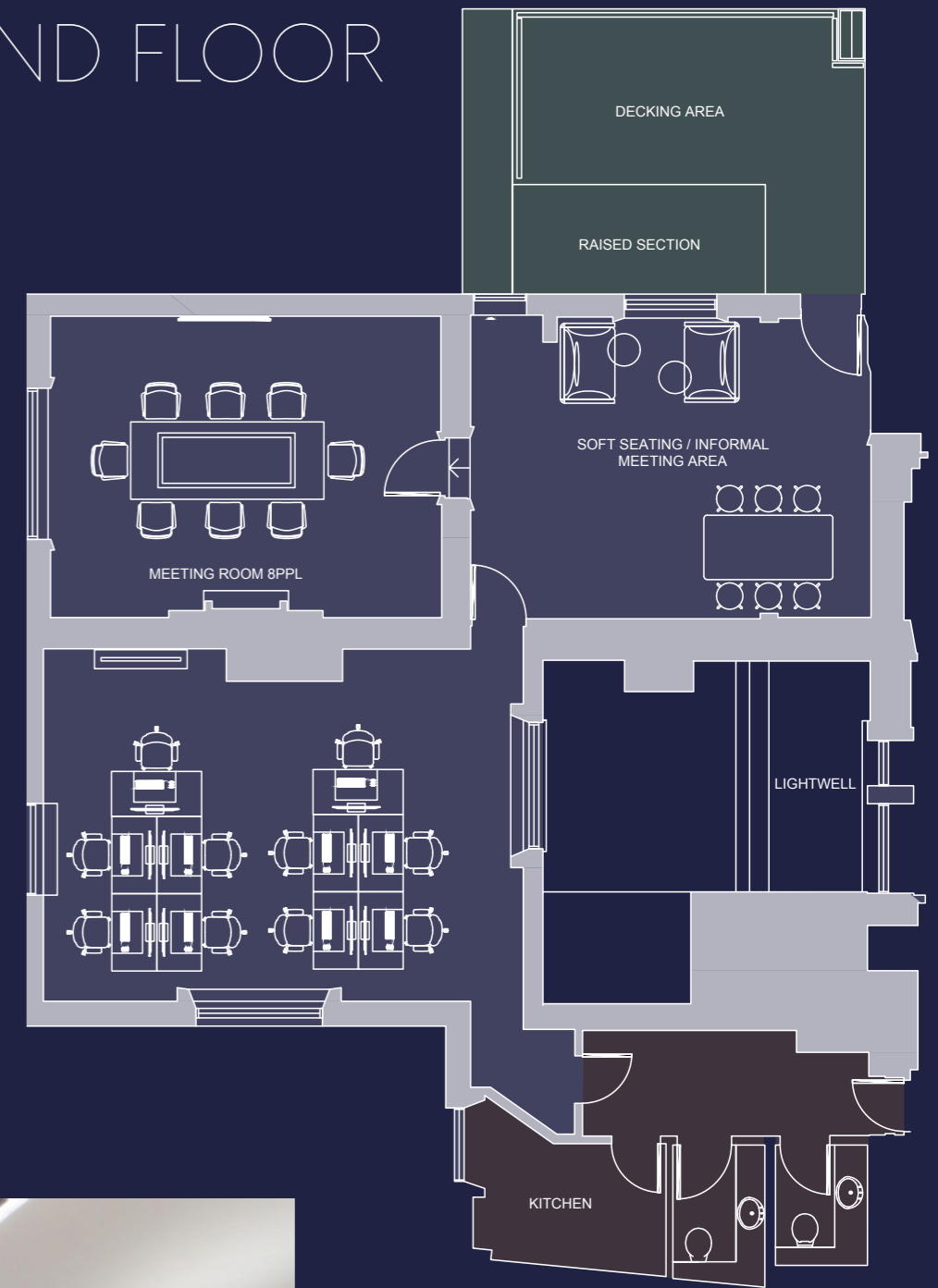


Building Exterior



GROUND FLOOR

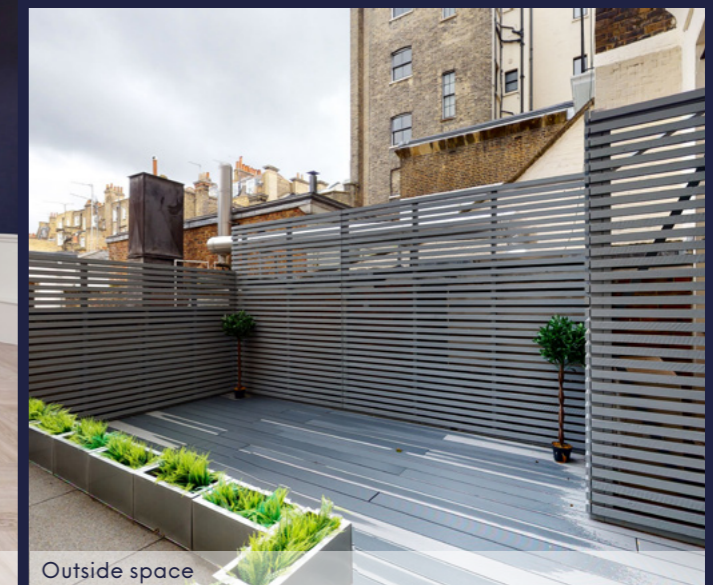
- Fibre connectivity
- Extensively refurbished floor
- New LED lighting
- New comfort cooling
- Demised WCs
- Passenger lift
- Private outside space
- 10 desks
- 8 person meeting room
- Informal meeting area



VIRTUAL WALKTHROUGH



Ground floor office



Outside space



A STONE'S THROW FROM VICTORIA

The building is situated on the west side of Grosvenor Place, bordering Belgravia and Victoria, and linking Hyde Park and Victoria. With Victoria Station in close proximity, the building has access to National Rail trains and the London Underground network (District, Circle and Victoria) as well as Victoria Coach Station. Hyde Park Corner also provides access to the Piccadilly Line which is just a short walk away.



TERM

A new lease direct from the Landlord for a term to be arranged.

Rent on application.

EPC

C:55

**EDWARD CHARLES
& PARTNERS W1**
CHARTERED SURVEYORS

020 7009 2300

Katie Dart
Jamie Shuttle

Colliers
INTERNATIONAL

020 7344 5560

James Swan
Tom Tregoning