

**UNIT 500**

**TO LET - READY TO OCCUPY**

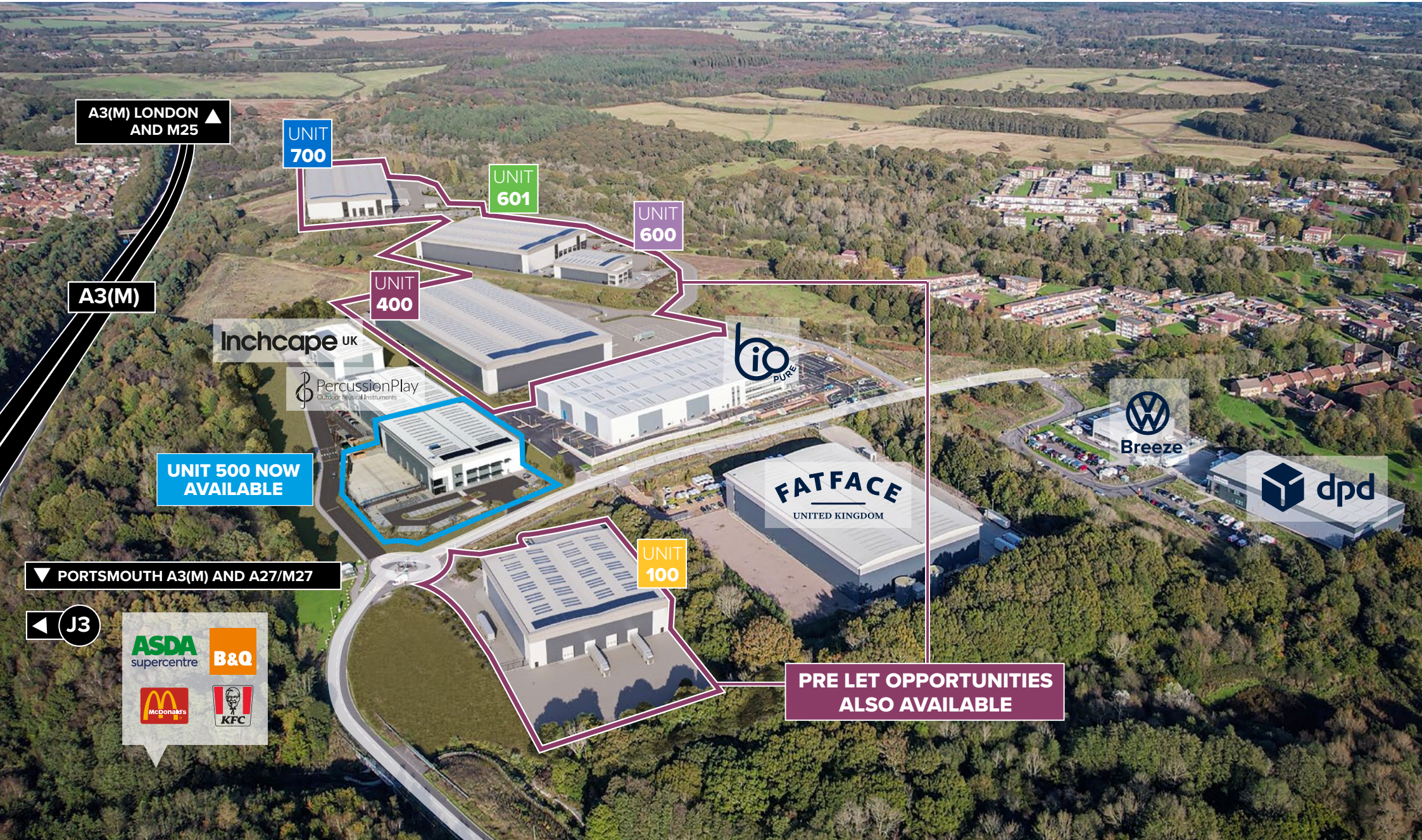
**NEW INDUSTRIAL / MANUFACTURING UNIT**

**33,205 SQ FT (3,084.9 SQ M)**

 **DUNSURY PARK**

**J3 A3(M) HAVANT PO9 4FE**





A3(M) LONDON AND M25 ▲

UNIT 700

UNIT 601

UNIT 600

UNIT 400

Inchcape UK

PercussionPlay  
Outdoor Musical Instruments

bio  
PURE

UNIT 500 NOW AVAILABLE

Breeze

FATFACE  
UNITED KINGDOM

dpd

▼ PORTSMOUTH A3(M) AND A27/M27

UNIT 100

PRE LET OPPORTUNITIES ALSO AVAILABLE

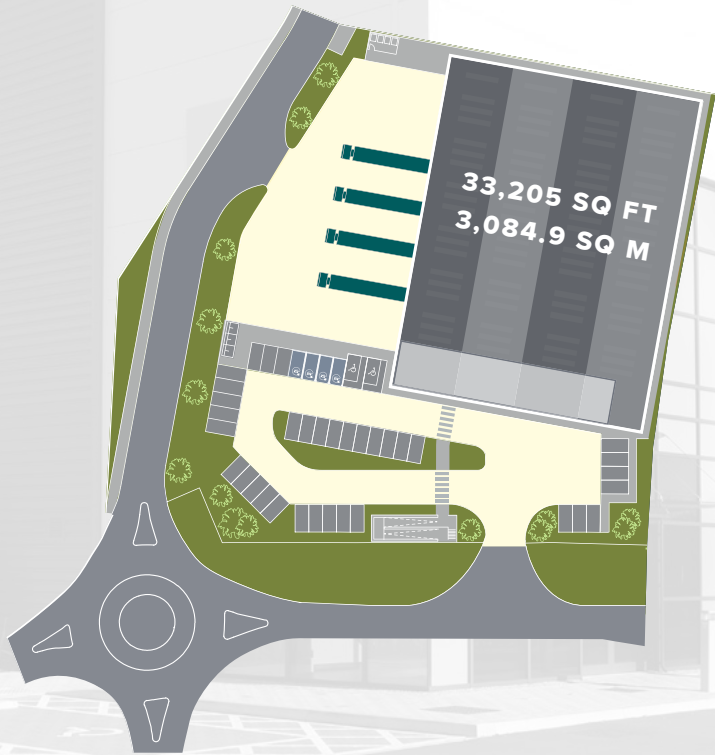
J3

ASDA supercentre B&Q  
McDonalds KFC

**SCHEDULE**

	<b>SQ FT</b>	<b>SQ M</b>
GROUND FLOOR	29,028	2,696.8
FIRST FLOOR OFFICES	3,554	330.2
MEZZANINE	623	57.9
<b>TOTAL</b>	<b>33,205</b>	<b>3,084.9</b>

FLOOR AREAS ARE BASED ON THE GROSS EXTERNAL AREA (GEA)







4 LEVEL ACCESS  
LOADING DOORS



SECURE YARD  
32M DEPTH



41 CAR PARKING  
SPACES



12M TO HAUNCH



50KN FLOOR  
LOADING



QUALITY  
FITTED OFFICES



PASSENGER  
LIFT

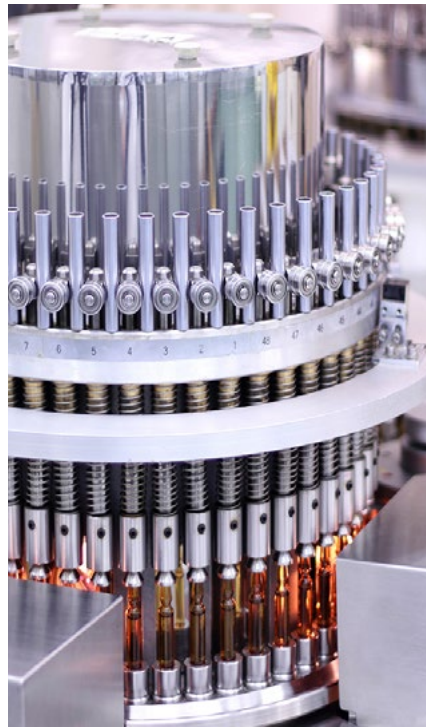
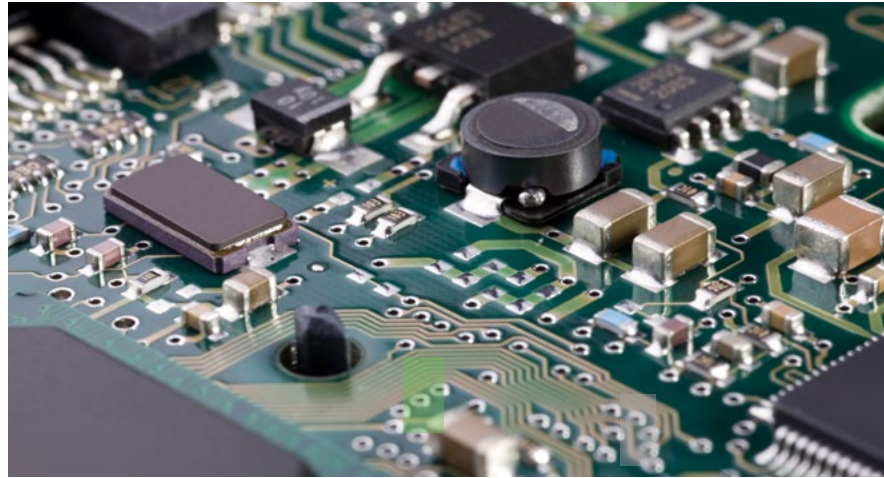
## SOLENT **FREPORT** TAX SITE

The Solent Freeport is one of 8 newly designated regions in the UK where normal customs and tax rules are relaxed or do not apply; the Governments intention is that it will attract inward investment and stimulate business activity in those areas.

From March 2022 Dunsbury Park will be awarded Freeport Tax Site status within the Solent Freeport which enables us to offer a generous government package of financial incentives (subject to application and qualification) for new occupiers.

Please call us for further information on the incentives and how they are applied.

New 120,000 sq ft headquarters office and manufacturing space for Bio Pure Technology Limited.



### **ENHANCED CAPITAL ALLOWANCES**

100% capital allowance on new plant and machinery used within the Freeport Tax Site



### **BUSINESS RATES**

100% business rates relief for 5 years.



### **NIC RATE RELIEF**

Subject to an upper salary threshold employees working within the Freeport Tax Site are eligible to 0% employer National Insurance contributions.



### **STAMP DUTY RELIEF**

Relief from leasehold stamp duty for all tenants.

These benefits are subject to time limits so early occupation is advisable. For more information please visit [solentfreeport.com](http://solentfreeport.com)

## WELLBEING

New site wide amenities are planned and will be open to all. Nature trails, fitness tracks, picnic areas, café and meeting facilities will support the health and wellbeing of staff.

## ECOLOGY AND ENVIRONMENT

Dunsbury Park complements the natural beauty of the surrounding countryside and encourages local wildlife to flourish. All new buildings will target BREEAM Excellent and sustainable energy use is at the forefront of design across the campus.



LED LIGHTING



EV CHARGING POINTS



CYCLE PARKING



PV & SOLAR THERMAL PANELS



RAINWATER HARVESTING

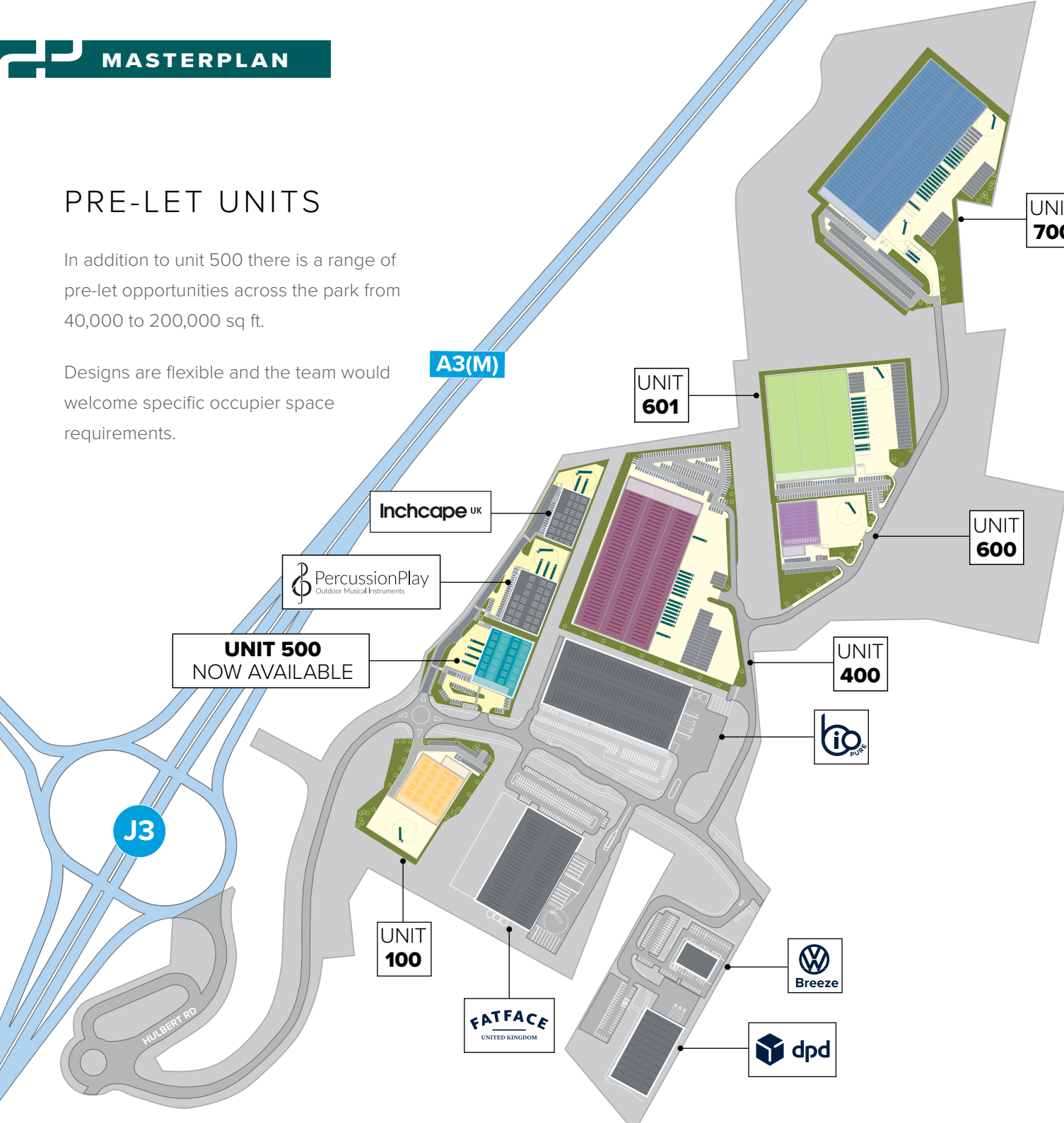


HIGH-QUALITY LANDSCAPING

**PRE-LET UNITS**

In addition to unit 500 there is a range of pre-let opportunities across the park from 40,000 to 200,000 sq ft.

Designs are flexible and the team would welcome specific occupier space requirements.



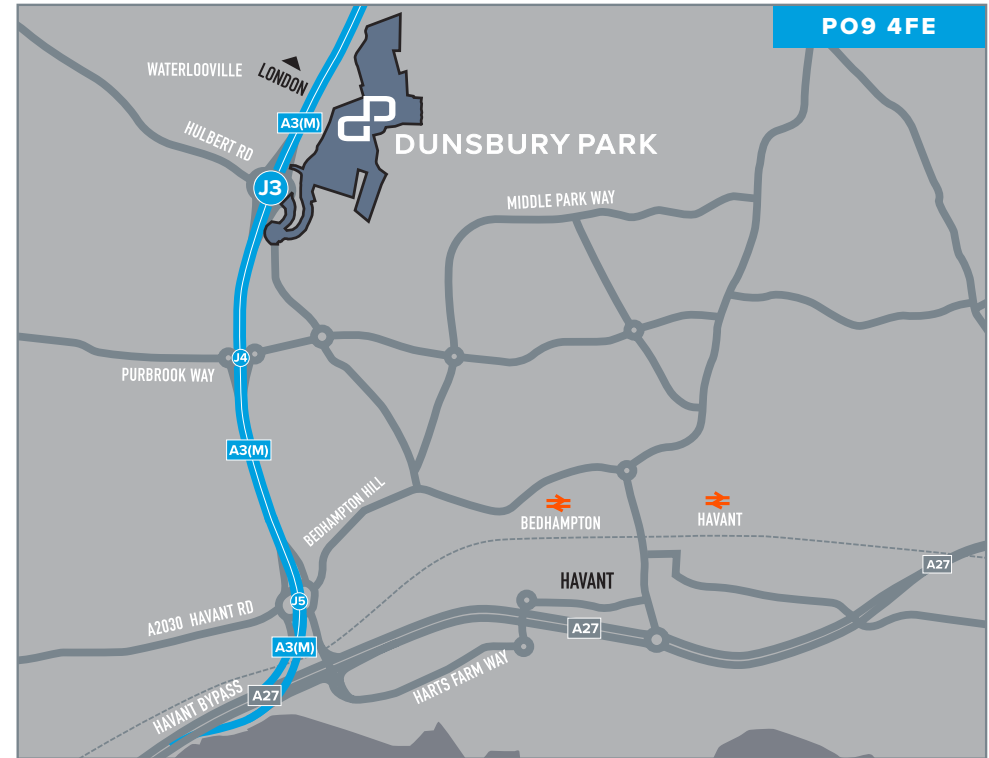
Breeze Motor Group's 13,000 sq ft facility and DPD's 38,000 sq ft distribution unit.



Global distribution headquarters of Fatface. 80,000 sq ft with 40,000 sq ft expansion land.

SCHEDULE	SQ FT	SQ M
UNIT 100	35,000	3,251
UNIT 400	149,210	13,862
UNIT 600	24,165	2,245
UNIT 601	100,000	9,290
UNIT 700	150,000	13,935





**Colliers**  
 020 7935 4499  
 colliers.com/uk/industrial

**Lambert Smith Hampton**

01489 579579  
 www.lsh.co.uk

DUNSBURYPARK.CO.UK

DEVELOPMENT BY

SUPPORTED BY

**monks.dare.minds**  
 what3words

**Portsmouth CITY COUNCIL**

**SOLENT FREEPORT**  
 THE UK'S GLOBAL GATEWAY

**JAMES HAESTIER** - 07818 038 009  
 james.haestier@colliers.com

**ELISE EVANS** - 07703 393 120  
 eevans@lsh.co.uk

**GEORGIA PIRBHAI** - 07599 533 143  
 georgia.pirbhai@colliers.com

**DAN RAWLINGS** - 07702 809192  
 DRawlings@lsh.co.uk

**Funded by UK Government**

Portsmouth City Council and their agents Colliers and Lambert Smith Hampton hereby give notice that to the extent permitted by law (i) the particulars are set out as a general outline only for the guidance of intending purchasers or lessees and do not constitute part of an offer or contract. (ii) all descriptions, dimensions, references to conditions and necessary permissions for use and occupation, and other details are given in good faith and are believed to be correct, but their accuracy is not guaranteed and any intending purchaser, lessee, mortgagee or other interested person should not rely on them as statements or representations of fact and must satisfy themselves by inspection, enquiries or otherwise as to the correctness of each of them. (iii) no person in the employment of Portsmouth City Council or their agents Colliers and Lambert Smith Hampton has no authority to make or give any representation of warranty whatever in relation to this property. All CGI images are illustrative schemes only. Published July 2024.