



Braeburn Drive , Hatfield, Doncaster



4



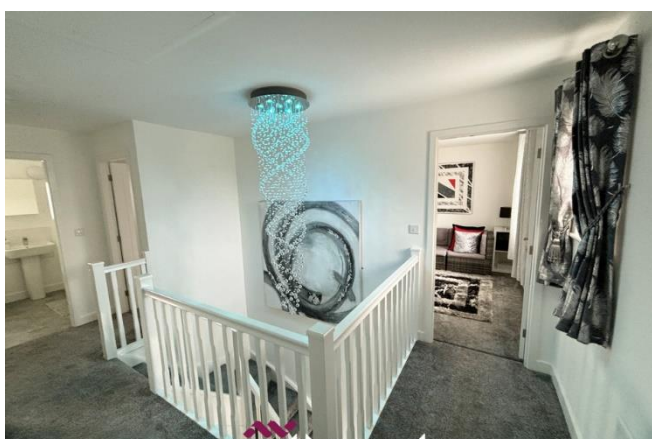
3



2

£320,000

- IMPRESSIVE GALLERY LANDING
- ATTRACTIVE MODERN KITCHEN
DINER
- INTEGRAL GARAGE
- DELIGHTFUL LIVING ROOM
- FOUR DOUBLE BEDROOMS
- LOCAL TO ALL AMENITIES
- Freehold
- EPC rating B
- COUNCIL TAX BAND: D



Step into this LUXURIOUS almost new FOUR BED DETACHED property on prestigious street in the highly sought-after area of Hatfield. This remarkable family home has been beautifully improved by the current owners offering a modern, bright, and versatile accommodation with an impressive eye. This wonderful detached residence offers ample space.

Upon arrival, you'll be welcomed by a large free flowing living space comprising of a light and airy hallway, leading through double doors to the cosy yet sizable Livingroom perfect for those winter nights drawing in, then you have a modern kitchen diner perfect for entertaining family and friends with double doors leading to the meticulously done garden. There is also a downstairs WC and a storage cupboard. Leading to the upper floor you will find an impressive staircase with a gallery landing, leading to FOUR DOUBLE BEDROOMS the master bedroom incorporating an ensuite, and all with built in wardrobes, a family bathroom and storage cupboard.



To the outside there is an integral garage and off road parking with uninterrupted views. To the rear you have a beautifully manicured garden with artificial grass and a boarded flower bed, patio area perfect for those entertaining nights for you to sit back with a glass of wine and relax!!!!

Only a stone's throw from Hatfield centre, offering great access to road links and within a short walk of numerous schools, local shops and amenities, like Hatfield Marina for those water sports or Jubilee Fields for a stroll or dog walk, Nature Reserve to take in all the incredible wildlife, Church, Coffee Shops, pubs and boutiques, and so much more.

LIVING ROOM 12.09m x 14.4m (39'8" x 47'2")

KITCHEN/DINING ROOM 11.1m x 19m (36'5" x 62'4")

HALLWAY

WC

BEDROOM ONE 12.09m x 13.02m (39'8" x 42'8")



EN-SUITE

BEDROOM TWO 11.09m x 12.01m (36'5" x 39'5")

BEDROOM THREE 10.05m x 11.01m (33'0" x 36'1")

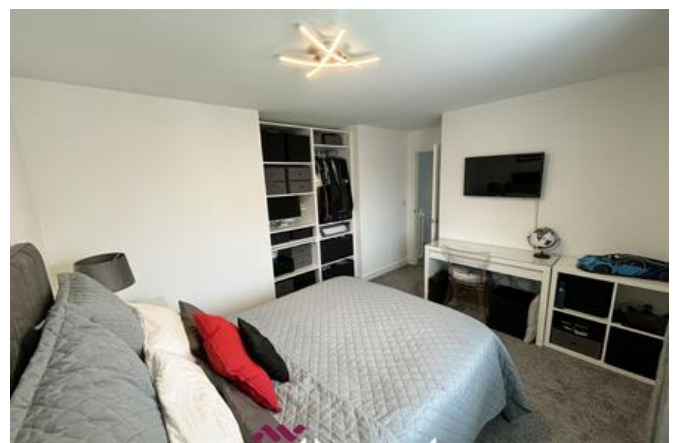
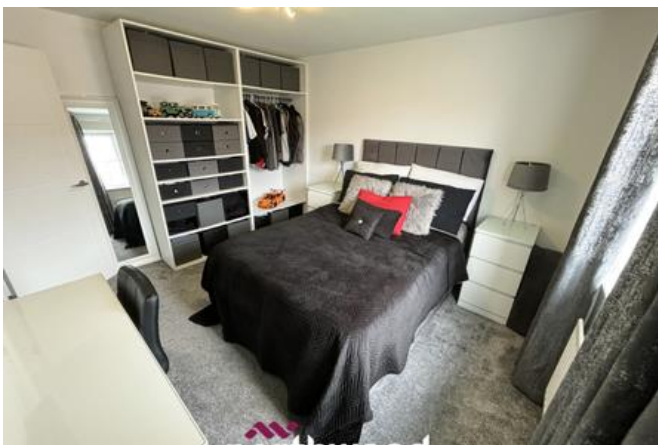
BRDROOM FOUR 10.02m x 12.05m (32'11" x 39'6")

BATHROOM

LANDING

DISCLAIMER

Disclaimer These details are intended to give a fair description only and their accuracy cannot be guaranteed nor are any floor plans (if included) exactly to scale. These details do not constitute part of any offer or contract and are not to be relied upon as statements of representation or fact. Intended purchasers are advised to recheck all measurements before committing to any expense and to verify the legal title of the property from their legal representative. Any contents shown in the images contained within these particulars will not be included in the sale unless otherwise stated or following individual negotiations with the vendor. Northwood have not tested any apparatus, equipment, fixtures or services so cannot confirm that they are in working order and the property is sold on this basis. Should you wish to make an offer on this property we will complete mandatory Anti Money Laundering (AML) checks on behalf of HMRC. We outsource this process to our partners, Coadjute. Coadjute charge a fee for this service.

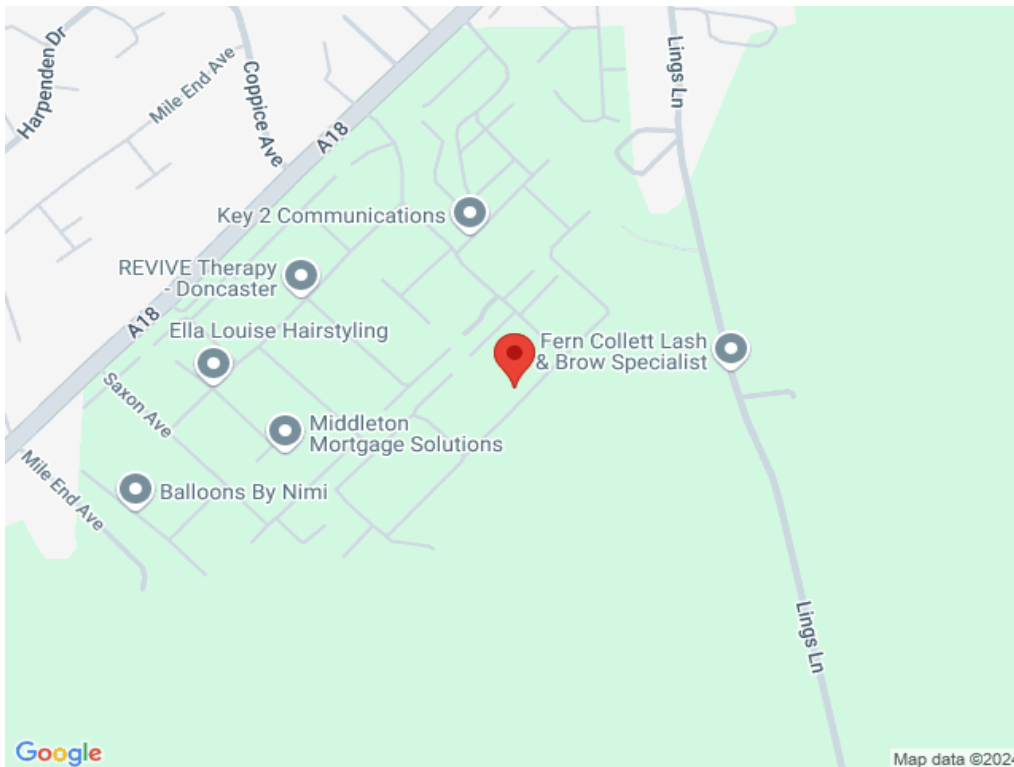




Ground Floor



First Floor



Northwood Hatfield

01302 279196

hatfield@northwooduk.com

