



Churchill Avenue, Hatfield Woodhouse, Doncaster
OIRO £299,990



3 1 2

Freehold | EPC rating: U

- Stunning Bungalow with an Amazing View
- Three Double Bedrooms
- Ample Driveway, garage & outbuildings
- Jack & Jill Bathroom & Ensuite to Master
- Classic Kitchen/Diner
- Light and Airy Lounge
- Front facing porch/home office
- Short stroll into Village or



Email
hatfield@northwooduk.com

Phone
01302 279196

Description

This fantastic bungalow would be ideal for someone who is looking for a downsize but not willing to compromise to greatly on quality and space.....

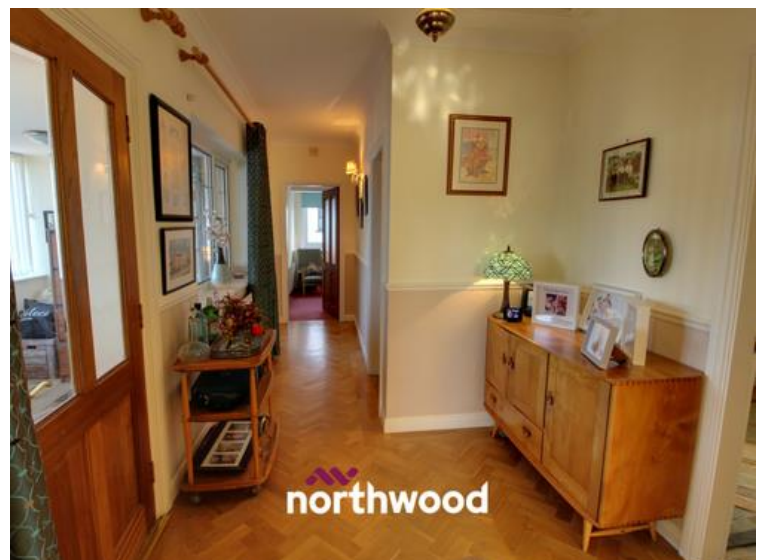
The accommodation comprises briefly of:- Spacious front entrance porch currently used as a home office, impressive hallway with parquet flooring, fabulous lounge which is light and airy, kitchen/diner, utility area, conservatory looking out onto the rear garden. There are three bedrooms, master with ensuite bathroom and built in wardrobes, there is a Jack and Jill bathroom services bedroom 2 and bedroom 3 is currently used as a formal dining room.

To the exterior, there is an ample driveway, the front has been paved and stoned for ease of maintenance, however, there is finely manicured side with mature shrubbery, there is a garage, workshop area with sink, further outbuilding, greenhouse and shed. The rear has open aspect offering breath taking views and has been landscaped with mature shrubbery and trees, bricked walled flower beds and patio area.

Serviced alarm.

This one is not to be missed, a beautiful bungalow with an amazing view!

Photographs



Front Entrance/ Office

Laminate flooring, composite door and large front facing double glazed uPVC windows and ample power points. Currently being used as an office.
3.81m x 1.75m (12'6" x 5'8")

Lounge

Wooden flooring, front facing double glazed uPVC bay window and side facing double glazed uPVC window, coving to the ceiling, ornate ceiling rose, dado rail, radiators, ample power points, feature chimney breast with gas fire, wall lights and shelving to the wall recess.
3.82m x 4.25m (12'6" x 13'11")

Utility

Tiled flooring, side facing uPVC door with obscure glass panel to the top, rear facing double glazed uPVC window, radiator, further wood effect cabinets space for washer and houses boiler and ample power points.
1.69m x 3.02m (5'6" x 9'11")

Bedroom 1

Fitted carpet, side facing double glazed uPVC window, built in cupboard, built in wardrobes and overhead cupboard, further wardrobes and dressing table, coving to the ceiling and ample power points.
4.65m x 3.30m (15'4" x 10'10")

Bedroom 2

Laminate flooring, rear facing double glazed uPVC obscure glass window, coving to the ceiling, radiator and ample power points.
3.31m x 3.03m (10'11" x 9'11")

Bedroom 3/ Dining Area

Wooden flooring, coving to the ceiling, loft access, radiator ample power points, side facing double glazed uPVC window.
2.40m x 4.74m (7'11" x 15'7")

Inner Hallway

Solid oak parquet flooring, internal double glazed uPVC window, radiator, coving to the ceiling, ample power points and loft access.

Kitchen/ Diner

Karndean flooring, side facing double glazed uPVC window, solid oak wall and base units with complimentary work surface, integrated dishwasher, cabinet with downlights, range master oven, one and a half bowl stainless sink, partial tiling to the walls, space for a fridge freezer.
4.22m x 3.37m (13'10" x 11'1")

Conservatory

Tiled flooring, radiators, rear facing double glazed uPVC windows, rear facing double glazed uPVC french doors leading to rear garden.
5.40m x 1.81m (17'8" x 5'11")

Ensuite

Tiled flooring, rear facing double glazed uPVC obscure glass window, tiled walls, pedestal wash hand basin, radiator, WC, bath with overhead shower. Granite windowsill and shelving and built in furniture.

Jack and Jill bathroom

Tiled flooring, rear facing double glazed uPVC obscure glass window, WC, heated towel rail, wash hand basin, shaver point, wall lights, coving to the ceiling, partial tiling to the walls, walk in shower cubicle with electric shower.

Exterior

Large driveway, garage and workshop, with up and over garage door and single door with power and light and sink. The rear is not overlooked and has a breath taking view, raised feature flowerbeds, built in brick barbeque, patio area, mature shrubbery, well stocked garden. To the front there is outside tap, and two sets of wrought iron gates, impressive garden wall providing lots of curb appeal and the front as been paved and stoned for ease of maintenance.

Disclaimer

Disclaimer These details are intended to give a fair description only and their accuracy cannot be guaranteed nor are any floor plans (if included) exactly to scale. These details do not constitute part of any offer or contract and are not to be relied upon as statements of representation or fact. Intended purchasers are advised to recheck all measurements before committing to any expense and to verify the legal title of the property from their legal representative. Any contents shown in the images contained within these particulars will not be included in the sale unless otherwise stated or following individual negotiations with the vendor. Northwood have not tested any apparatus, equipment, fixtures or services so cannot confirm that they are in working order and the property is sold on this basis.

More photographs



Floorplan

Ground Floor



Map

