



5 Laycock Fields, Keighley, BD22 0DN
Asking price £249,950

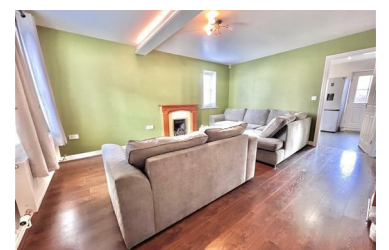


Situated in the popular residential village of Cowling, this well presented three bedroom end of terrace would suit a variety of buyers including first time buyers and growing families alike.

TO THE GROUND FLOOR

ENTRANCE PORCH: 4'10" x 3'0"

SITTING ROOM: 16'4" x 14'11" with laminate floor, open spindled staircase to the first floor, 2 windows, gas fire with timber surround & marble effect hearth, TV & telephone points, concealed ceiling lighting and useful storage space under the stairs.



- ELECTRIC CAR CHARGER
- DRIVEWAY FOR TWO CARS
- SINGLE GARAGE
- DINING KITCHEN