



RE/MAX
Prime Estates



14 Bridle Road, Stourbridge, DY8 4QE
£375,000

Located in the ever-popular village of Wollaston, this charming three-bedroom Victorian end-of-terrace home blends period character with modern touches. The ground floor welcomes you with a spacious hallway featuring a beautiful stained-glass side window, leading to a cosy lounge with open fireplace and bay window dressed with fitted shutter blinds. A handy utility cloakroom adds convenience, while the impressive open-plan kitchen/dining room boasts a vaulted ceiling and two remote-controlled skylights, creating a bright and airy hub for everyday living or entertaining.

Upstairs, you'll find three generously sized bedrooms and a contemporary family bathroom. Outside, the rear garden is ideal for families and summer gatherings, featuring two large decking areas and a central lawn.

Wollaston continues to grow in popularity, offering excellent local schools, traditional pubs, and a range of amenities—all just a stone's throw from scenic countryside walks.

Approach



With decorative wrought-iron railings, chipping stones and a step into the storm porch

Entrance Hall



With a door leading from the front, traditional 'Minton' style tiled flooring throughout, doors to various rooms, a stained glass window to the rear and a central heating radiator

Living Room 23'11" x 12'0" (7.30 x 3.66)



With a door leading from the entrance hall, open fire with decorative surround and hearth, bay window with fitted shutter blinds and a central heating radiator

Kitchen Dining Room 23'11" x 12'0" (7.30 x 3.66)



With a door leading from the entrance hall, fitted with a range of wall and base units with worktops, stainless steel sink with mixer tap and drainer, space for a range cooker with extractor hood above, integrated dishwasher, fridge and freezer, breakfast island with store cupboards, remote controlled skylight windows to the ceiling, double glazed windows to the rear and side, patio doors offering access to the garden and a central heating radiator

Utility / Cloakroom



With a door leading from the entrance hall, hand wash basin, WC, laundry machinery outlet points

Landing

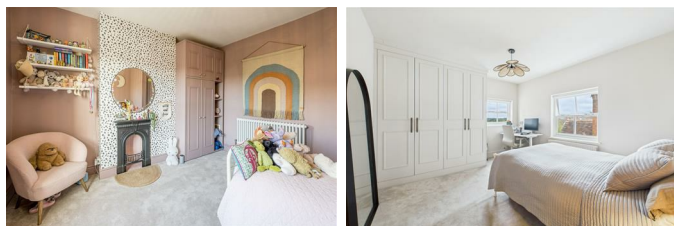


With stairs ascending from the entrance hall, doors to various rooms

Bedroom 13'4" x 11'10" (4.07 x 3.63)

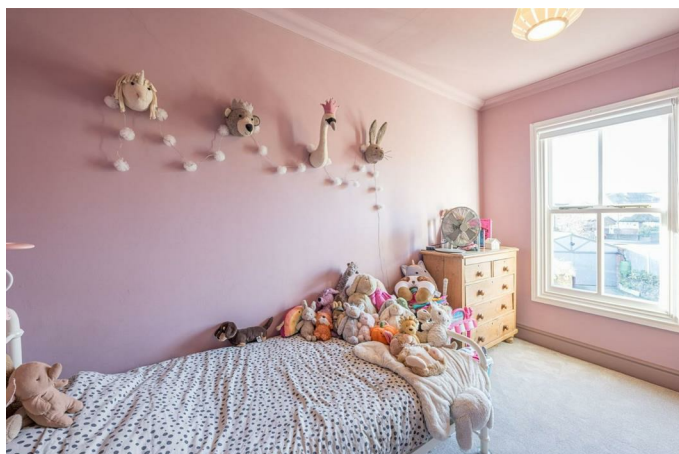
With a door from the landing, fitted wardrobes, double glazed windows to the rear and a central heating radiator

Bedroom 12'7" x 13'2" (3.84 x 4.03)



With a door from the landing, feature decorative fireplace, glazed window to front and a central heating radiator

Bedroom 12'6" x 7'0" (3.82 x 2.15)



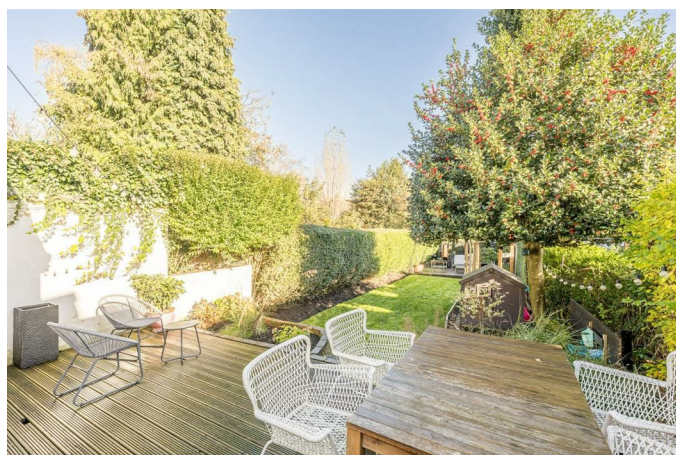
With a door from the landing, double glazed window to front and a central heating radiator

Bathroom



With a door leading from the landing, WC, hand wash basin, bath with shower over and full height tiled surround, double glazed window to the rear and a central heating radiator

Garden



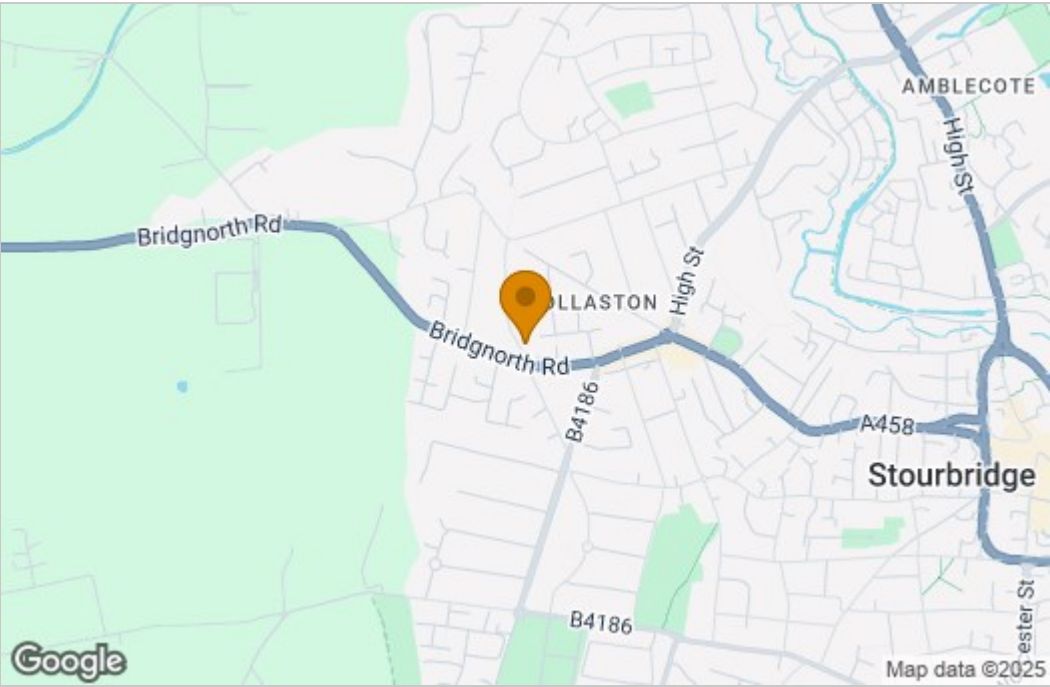
With a door leading from the kitchen diner, decked area to the front with lawn beyond and mature shrub borders

Floor Plan

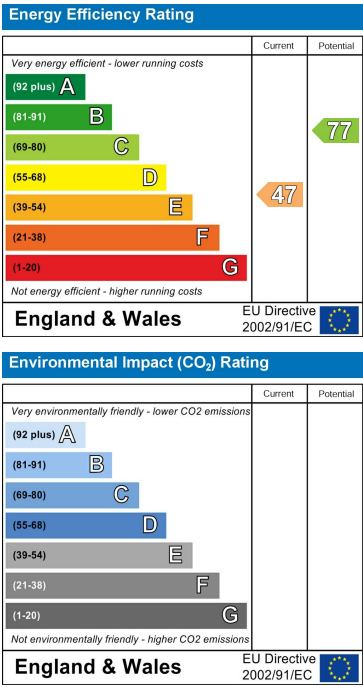


While every attempt has been made to ensure the accuracy of the foregoing particulars, measurements of doors, windows, rooms and any other items are approximate and no responsibility is taken for any error, omission or misstatement. This plan is for illustrative purposes only and should be used as such by any prospective purchaser. The services, systems and appliances shown have not been tested and no guarantee, as to their operability or efficiency can be given.
Made with GoodSpace 10/2023

Area Map



Energy Efficiency Graph



These particulars, whilst believed to be accurate are set out as a general outline only for guidance and do not constitute any part of an offer or contract. Intending purchasers should not rely on them as statements of representation of fact, but must satisfy themselves by inspection or otherwise as to their accuracy. No person in this firm's employment has the authority to make or give any representation or warranty in respect of the property.