



RE/MAX
Prime Estates



88 Worcester Street, Stourbridge, DY8 1AY
£360,000

This mid-terrace house on Worcester Street in Stourbridge presents an excellent opportunity for those seeking a blend of traditional charm and modern convenience. Built in 1900, the property has been thoughtfully renovated to a superb specification, ensuring that no expense has been spared in its transformation. Spanning an impressive 1,152 square feet, the home offers considerably more space than one might expect.

The ground floor features a well-proportioned reception room, perfect for entertaining or relaxing, alongside a contemporary kitchen that seamlessly integrates modern living with classic design. The property boasts two comfortable bedrooms- both with en-suite facilities, providing ample accommodation for families or professionals alike.

An additional loft space currently serves as a home office, catering to the growing demand for flexible working arrangements. This versatile area can easily adapt to suit your needs, whether for work or leisure.

Parking is available at the front of the property, adding to the convenience of this well-located home. The traditional exterior is complemented by modern features, creating a harmonious balance that is sure to attract discerning buyers.

The location is particularly advantageous, with Mary Stevens Park just a short walk away, offering beautiful green spaces for leisure and recreation. Stourbridge Town Centre is also within easy reach, providing a variety of shops, restaurants, and essential amenities. This property not only offers a comfortable living space but also places you in close proximity to the vibrant community and local attractions that Stourbridge has to offer.

Approach



Being set behind a dropped kerb with decorative wrought iron fencing to the front and a front door leading to;

Entrance Hall

With a composite front door, open to the living room with a central heating radiator

Living Room 16'7" x 15'5" (5.07 x 4.71)

With an opening from the entrance hall, being open plan to the dining area, designer wall mounted gas fire, stairs ascending to the first floor, a door leading to the kitchen, double patio doors to the rear garden and a central heating radiator

Dining Area 11'3" x 12'4" (3.43 x 3.78)



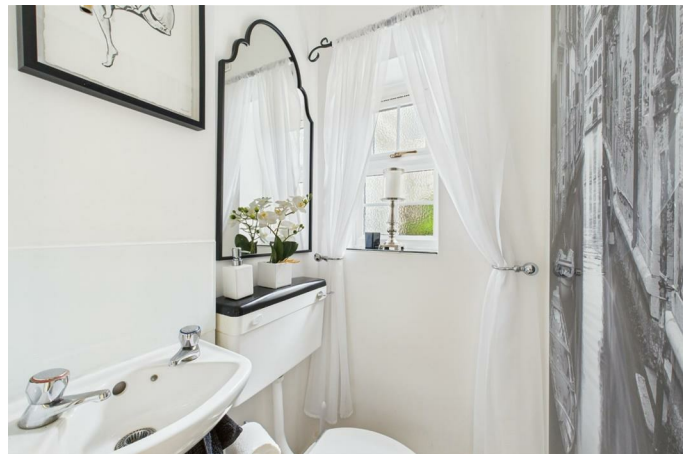
Being open plan to the living room, double glazed window to the front with fitted shutters and a central heating radiator

Kitchen 11'8" x 6'11" (3.56 x 2.13)



With a door leading from the living room, fitted with a range of wall and base units with worktops and tiled splashbacks, integrated appliances, 'Hotpoint' hob with stainless steel extractor, a double glazed window to the side and a double glazed patio door to the rear

WC 3'1" x 3'5" (0.95 x 1.05)



With a door leading from the living room, WC, hand wash basin and a double glazed window to the side

Landing

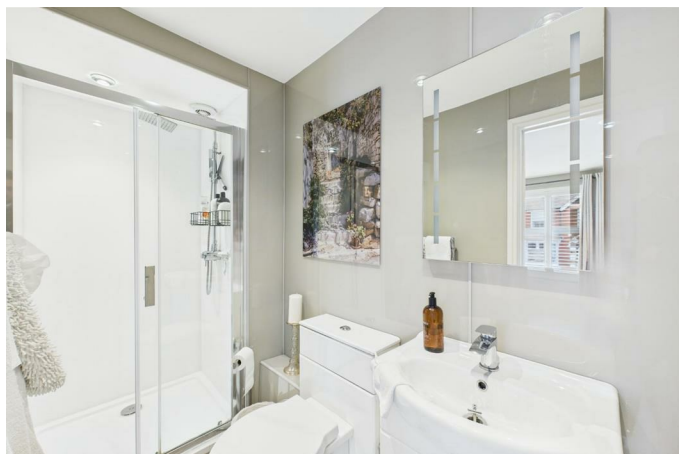
With stairs leading from the living room, doors to various rooms

Bedroom 11'5" x 14'9" (3.48 x 4.51)



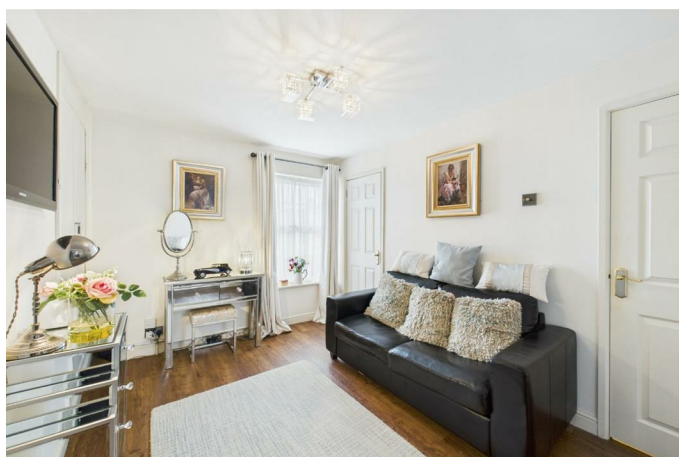
With a door leading from the landing, a door leading to the 'Jack & Jill' bathroom, built in wardrobe storage, double glazed windows to the front with traditional style shutters and a central heating radiator

Jack & Jill Family Bathroom 4'1" x 9'7" (1.26 x 2.94)



With doors leading from the landing and the bedroom, full height panel surround, WC, hand wash basin, walk in shower cubicle with glass screen and a central heating radiator

Bedroom 12'1" x 8'9" (3.69 x 2.67)



With a door leading from the landing, a door leading to the en-suite, built in wardrobe storage, a double

glazed window to the rear and a central heating radiator

En-Suite 5'10" x 5'3" (1.79 x 1.61)



With a door leading from the bedroom, half height panelling throughout, WC, hand wash basin, a corner shower cubicle with full height tile surround and mixer shower, a double glazed window to the rear and a central heating radiator

Loft Room 10'2" x 16'2" (3.11 x 4.94)



With stairs leading from the landing, eaves storage

Garden



With doors leading from the living room and the kitchen, low maintenance rear garden with patio

throughout, garden storage building and a gate to the rear offering access to Baylie Street

Cellar

We are informed by our vendor client that the property has the added benefit of cellar space. Access to the cellar space is via a door in the floor in the living room which is not currently used.

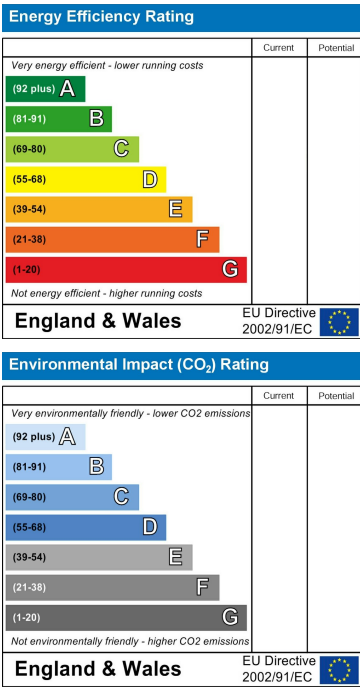
Floor Plan



Area Map



Energy Efficiency Graph



These particulars, whilst believed to be accurate are set out as a general outline only for guidance and do not constitute any part of an offer or contract. Intending purchasers should not rely on them as statements of representation of fact, but must satisfy themselves by inspection or otherwise as to their accuracy. No person in this firm's employment has the authority to make or give any representation or warranty in respect of the property.