



RE/MAX
Prime Estates



141 Field Sidings Way, Kingswinford, DY6 7AR
£80,000

Step into this beautifully maintained, first-floor, 2-bedroom apartment. Perfectly designed for modern living, this apartment features an open-plan kitchen, dining, and lounge area—ideal for entertaining or relaxing in style. Ready to move in and offered with no onward chain, it's a fantastic opportunity for first-time buyers or those looking to downsize.

With its clean, modern aesthetic, this property serves as a blank canvas, inviting you to create the home of your dreams. Convenience is key here, as the apartment includes one allocated parking space, ensuring your vehicle is always secure. Additionally, visitor parking is available, making it easy to host guests.

don't miss out on the opportunity to make this apartment your new home, book in a viewing today!

Approach



With a carpark to the front with allocated and visitor bays, path with shrub border leading to intercom operated front and back door

Communal

The apartment is located on the first floor shared with one other apartment on the same floor

Entrance Hall

With a door leading from the communal entrance, doors to various room, a central heating radiator and a secure intercom

Living Room 10'3" x 11'5" (3.14 x 3.49)



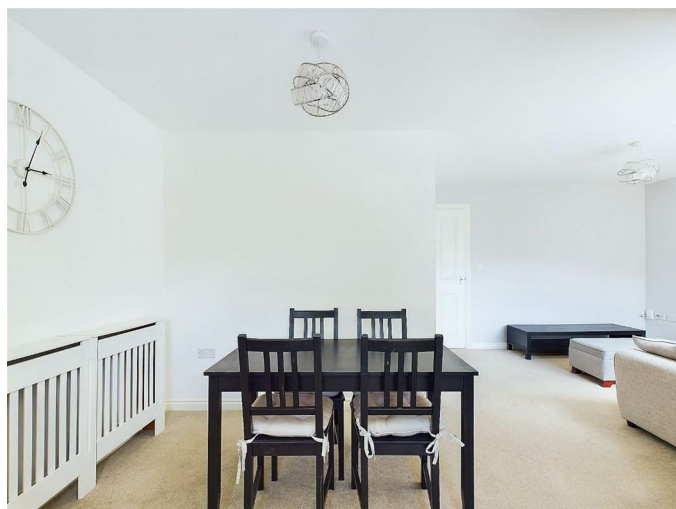
With a door leading from the entrance hall, open plan to kitchen, dining area and a central heating radiator located in the lounge area under the double glazed window to the rear

Kitchen 6'9" x 9'11" (2.07 x 3.04)



Being open plan with the living room and dining area fitted with a range of wall and base units with worktops, stainless steel sink with mixer tap and drainer, integrated appliances, gas hob with extractor above and a double glazed window to the rear

Dining Area 7'8" x 10'1" (2.34 x 3.09)



Bathroom 5'6" x 7'2" (1.69 x 2.19)



With a door leading from the entrance hall, bath with shower over and full height tiled surround, hand wash basin with tilted splash back, WC, a central heating radiator and a double glazed window to the rear

Bedroom one 9'6" x 9'4" (2.90 x 2.85)



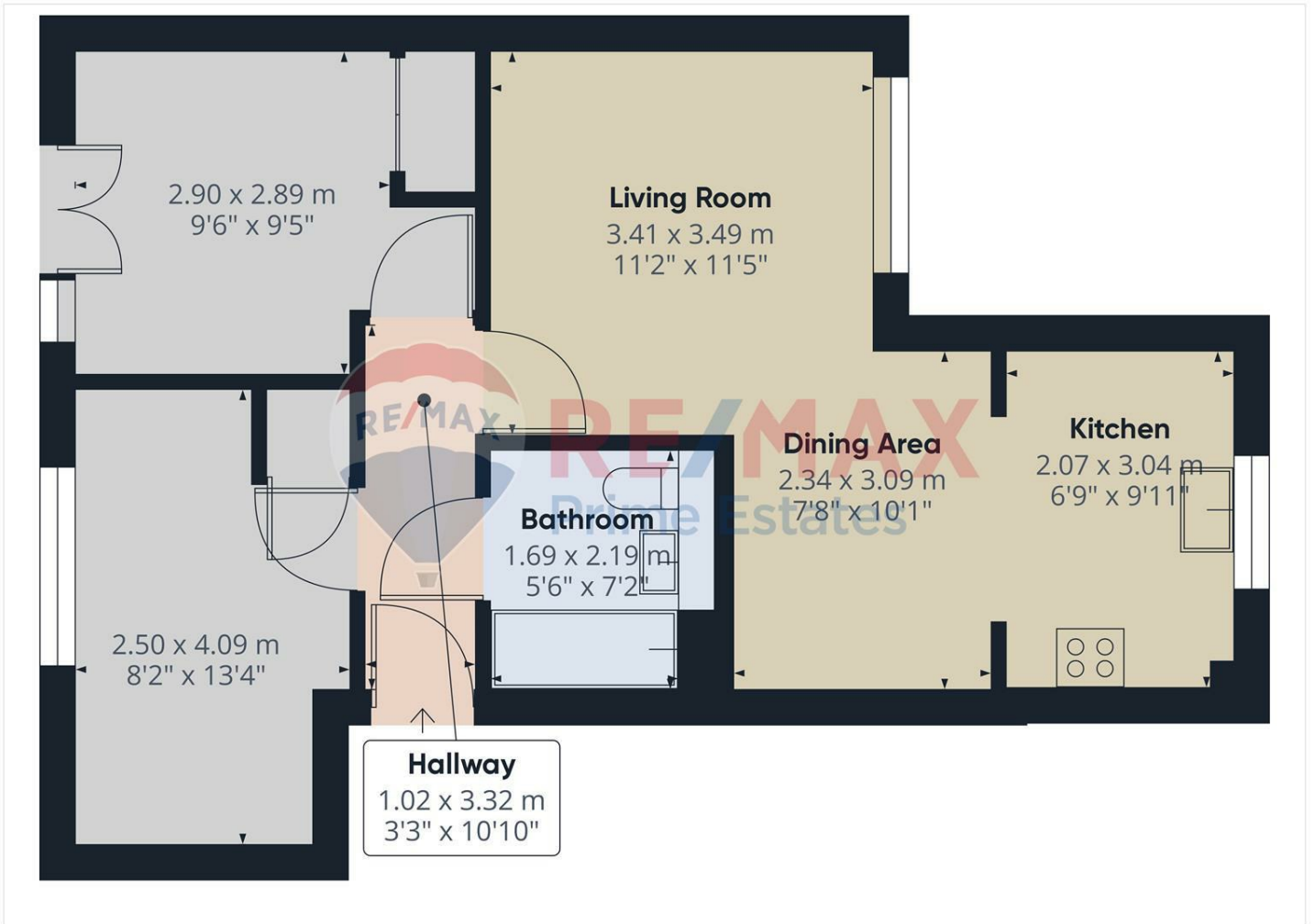
With a door leading from the entrance hall, fitted wardrobes to the side and double patio doors to the Juliette balcony

Bedroom two 8'2" x 13'5" (2.50 x 4.09)

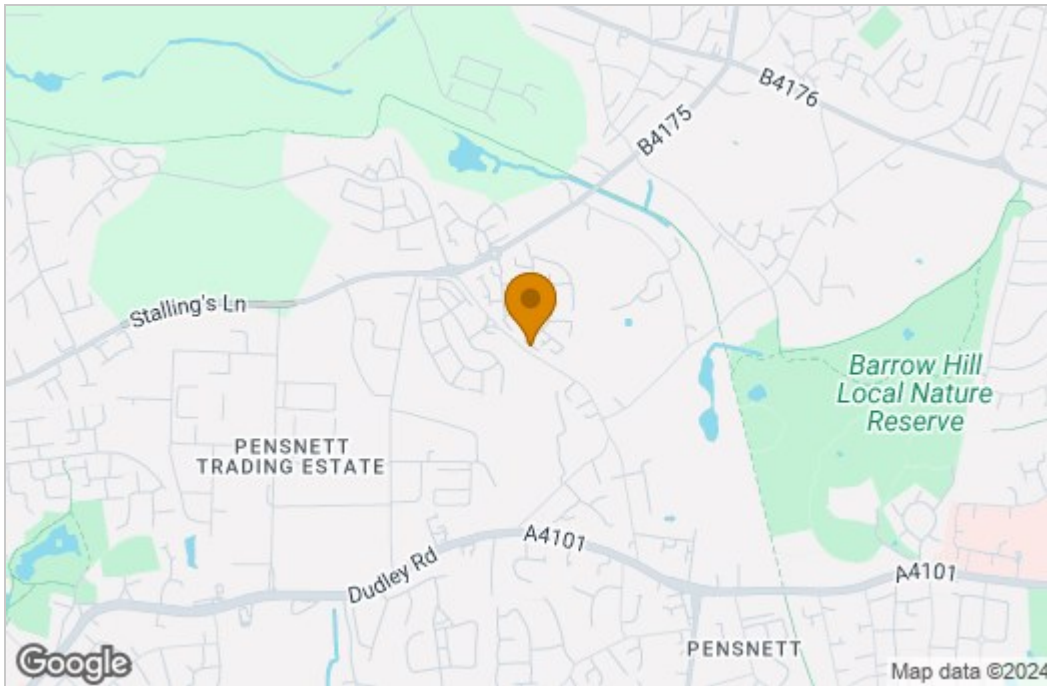


With a door leading from the entrance hall, single door cupboard and a central heating radiator

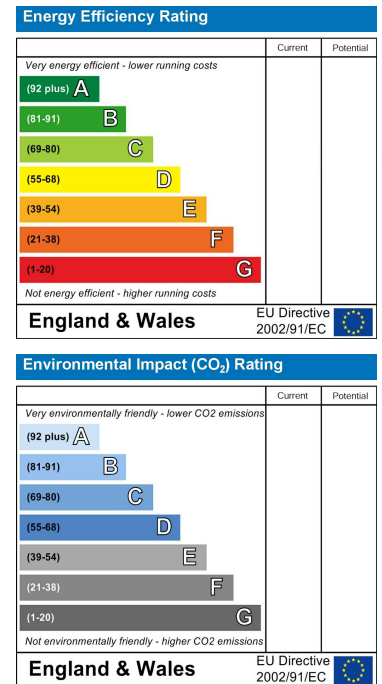
Floor Plan



Area Map



Energy Efficiency Graph



These particulars, whilst believed to be accurate are set out as a general outline only for guidance and do not constitute any part of an offer or contract. Intending purchasers should not rely on them as statements of representation of fact, but must satisfy themselves by inspection or otherwise as to their accuracy. No person in this firm's employment has the authority to make or give any representation or warranty in respect of the property.

Stourbridge, West Midlands, DY8 1DX

Tel: +44 (0) 1384 438457 Email: prime.estates@remax.uk <https://remax.uk/locations/RE-MAX-Prime-Estates>