



**RE/MAX**  
Prime Estates



**47A Alma Street, Halesowen, B63 2JD**  
**Offers in the region of £210,000**

Welcome to this inviting modern 2-bedroom detached home. Immaculately kept, this residence boasts a newly renovated kitchen, alongside generously sized rooms for relaxation and entertainment. Convenience is key with a downstairs toilet. Outside, a charming garden beckons, offering a tranquil retreat.

The property briefly comprises, newly fitted kitchen, ground floor bathroom, spacious lounge with log burning stove and a convenient utility room

To the first floor; two generously sized bedrooms, further storage and additional WC.

## Approach



Being set back from the road, pebbled driveway, side access gate to the rear garden and a door leading to the kitchen

**Kitchen 11'3" x 10'4" (3.44 x 3.16)**



With a door leading from the front driveway, open plan to living room, fitted with a range of wall and base units with worktops, tiled splashback surround, integrated appliances, hob with extractor above, stainless steel sink with mixer tap and a double glazed window to the front

**Living Room 15'11" x 11'3" (4.86 x 3.44)**



Being open plan to the kitchen with a door leading to the utility, solid fuel burning stove with hearth and

decorative mantel, stairs leading to the first floor accommodation, a double glazed patio door to the rear garden and an electric heater

**Utility 6'1" x 4'3" (1.86 x 1.30)**



With a door leading from the living room, a door leading to the bathroom, utility outlet points with worktops and a double glazed window to the side

## Bathroom



With a door leading from the utility, WC, hand wash basin, bath with electric shower over, store cupboard, a double glazed window to the rear and an electric wall mounted heater

## Landing

With stairs leading from the lounge, doors to various rooms

### Bedroom One 11'3" x 10'4" (3.44 x 3.16)



With a door leading from the landing, a double glazed window to the front and an electric wall mounted heater

### Bedroom Two 8'10" x 7'10" (2.71 x 2.40)



With a door leading from the landing, a double glazed window to the rear and an electric wall mounted heater

### WC



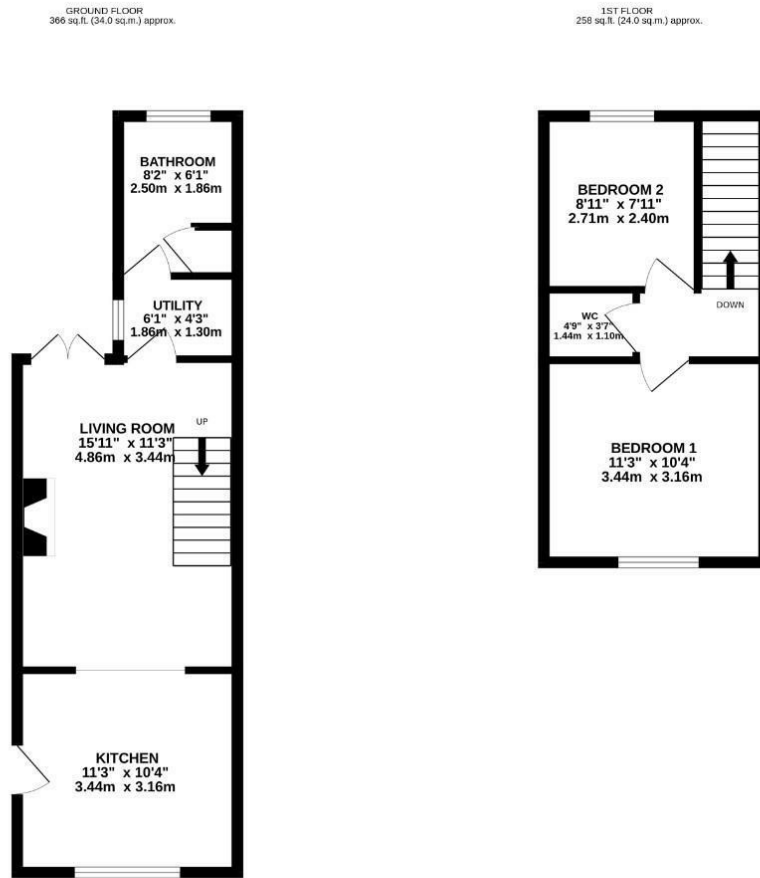
With a door leading from the landing, WC and hand wash basin with tile splashback

### Garden



With a patio door leading from the living room, patio area to the front with lawn beyond, mature shrubbery throughout and a side access gate to the front

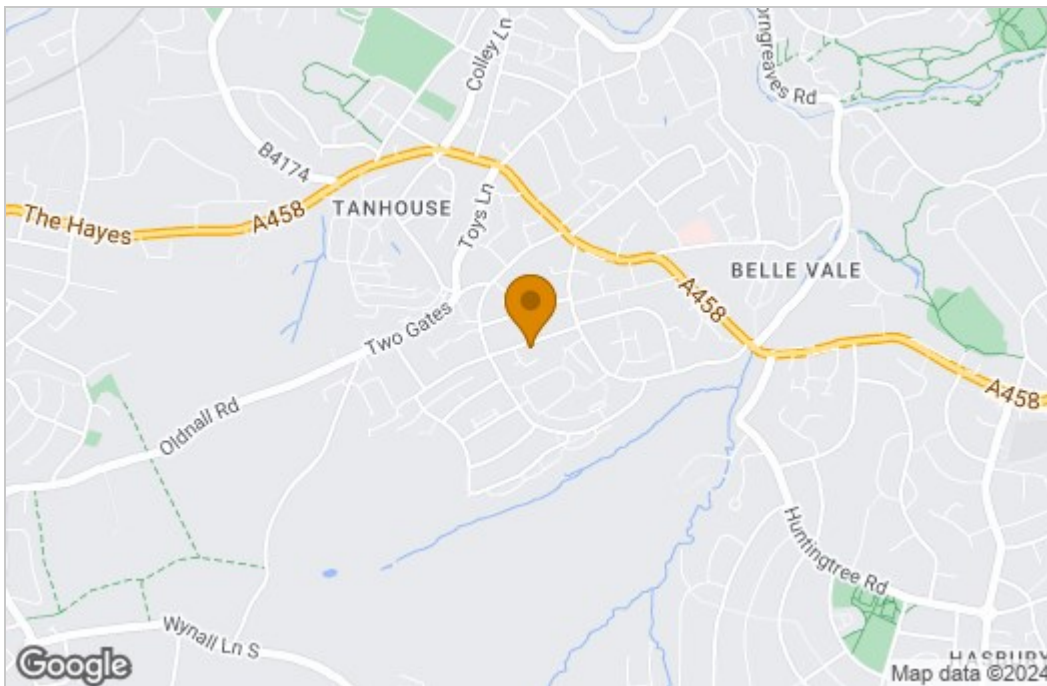
# Floor Plan



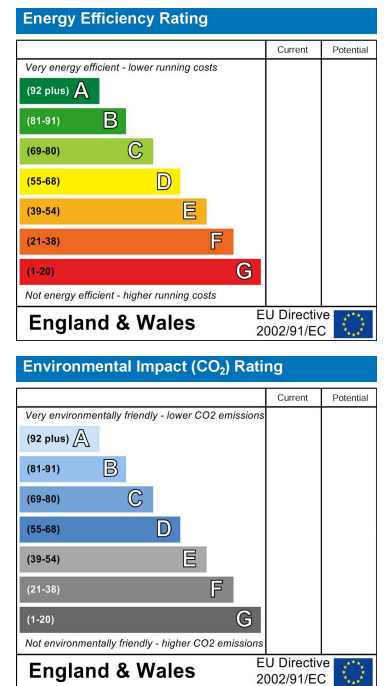
TOTAL FLOOR AREA - 624 sq.ft. (58.0 sq.m.) approx.

Whilst every attempt has been made to ensure the accuracy of the floorplans contained here, measurements of doors, windows, stairs and any other items are approximate and no responsibility is taken for any error, omission or mis-statement. This plan is for illustrative purposes only and should be used as such by any prospective purchaser. The services, systems and appliances shown have not been tested and no guarantee as to their operability or efficiency can be given.  
Made with Metropix v2024

# Area Map



# Energy Efficiency Graph



These particulars, whilst believed to be accurate are set out as a general outline only for guidance and do not constitute any part of an offer or contract. Intending purchasers should not rely on them as statements of representation of fact, but must satisfy themselves by inspection or otherwise as to their accuracy. No person in this firm's employment has the authority to make or give any representation or warranty in respect of the property.

Stourbridge, West Midlands, DY8 1DX

Tel: +44 (0) 1384 438457 Email: [prime.estates@remax.uk](mailto:prime.estates@remax.uk) <https://remax.uk/locations/RE-MAX-Prime-Estates>