



**RE/MAX**  
Prime Estates



**42b Turners Lane, Brierley Hill, DY5 3SQ**  
**Asking price £342,500**

Introducing this impressive three-bedroom detached house situated on Turners Lane. Boasting spacious accommodation and desirable features, this property offers a comfortable and versatile living space for families.

The property boasts three reception rooms, including a conservatory, providing flexible spaces for living, dining, and entertaining. Whether it's cosy evenings by the fireplace or enjoying the natural light in the conservatory, there's a space for every occasion.

The property has the added benefit of a larger-than-expected rear garden with mature shrubbery throughout, as well as a pleasant nature pool.

Nestled on Turners Lane, this property enjoys a peaceful location while still being within easy reach of local amenities and transport links. With its spacious layout and desirable features, this detached house offers a wonderful opportunity for families seeking a comfortable and inviting home. Viewing is highly recommended to fully appreciate all that this property has to offer



## Approach



With a tarmac driveway leading to storm porch, grass area to the side

## Entrance Hall

With a door leading to the front garden, stairs to the first floor and doors to various rooms

## Sitting Room 13'3" x 11'6" (4.04m x 3.51m)



With a door leading from the entrance hall, fireplace with decorative surround, double glazed sliding patio doors to the rear and a central heating radiator

## Dining Room 8'5 x 10'5 (2.57m x 3.18m)



With a door leading from the entrance hall, double glazed window to the front and a central heating radiator

## Kitchen 9'7 x 9'0 (2.92m x 2.74m)



With a door leading from the entrance hall, fitted with a range of wall and base units with worktops and splashbacks, space for appliances, stainless steel sink with mixer tap and drainer, integrated oven and hob with extractor hood and a double glazed sliding patio door to the conservatory

## Conservatory 12'5 x 9'7 (3.78m x 2.92m)



With patio doors leading from the kitchen, double glazed windows to three sides, a central heating radiator and a door leading to the rear garden

## WC



With a door leading from the entrance hall, hand wash basin, WC with tiled surround



## Landing

With stairs leading from the entrance hall, doors to various rooms

## Bedroom One 10'9" x 11'10" (3.28m x 3.61m)



With a door leading from the landing, built-in wardrobe, a door leading to the en-suite, a central heating radiator and double glazed window to the front

## En-Suite

With a door leading from the bedroom, WC, hand wash basin and shower cubicle

## Bedroom Two 32'9" x 29'6" x 29'6" x 32'9" (10'9" x 9'10")



With a door leading from the landing, fitted wardrobe, double glazed window and a central heating radiator

## Bedroom Three 7'11" x 9'11" (2.41m x 3.02m)



With a door leading from the landing, a double glazed window to the rear and a central heating radiator

## Family Bathroom



With a door leading from the landing, bath with half height tile surround, WC, hand wash basin, a double glazed window and a central heating radiator

## Garage 8'5" x 16'6" (2.57m x 5.03m)

With an up-and-over garage door to the front, internal access to entrance hall

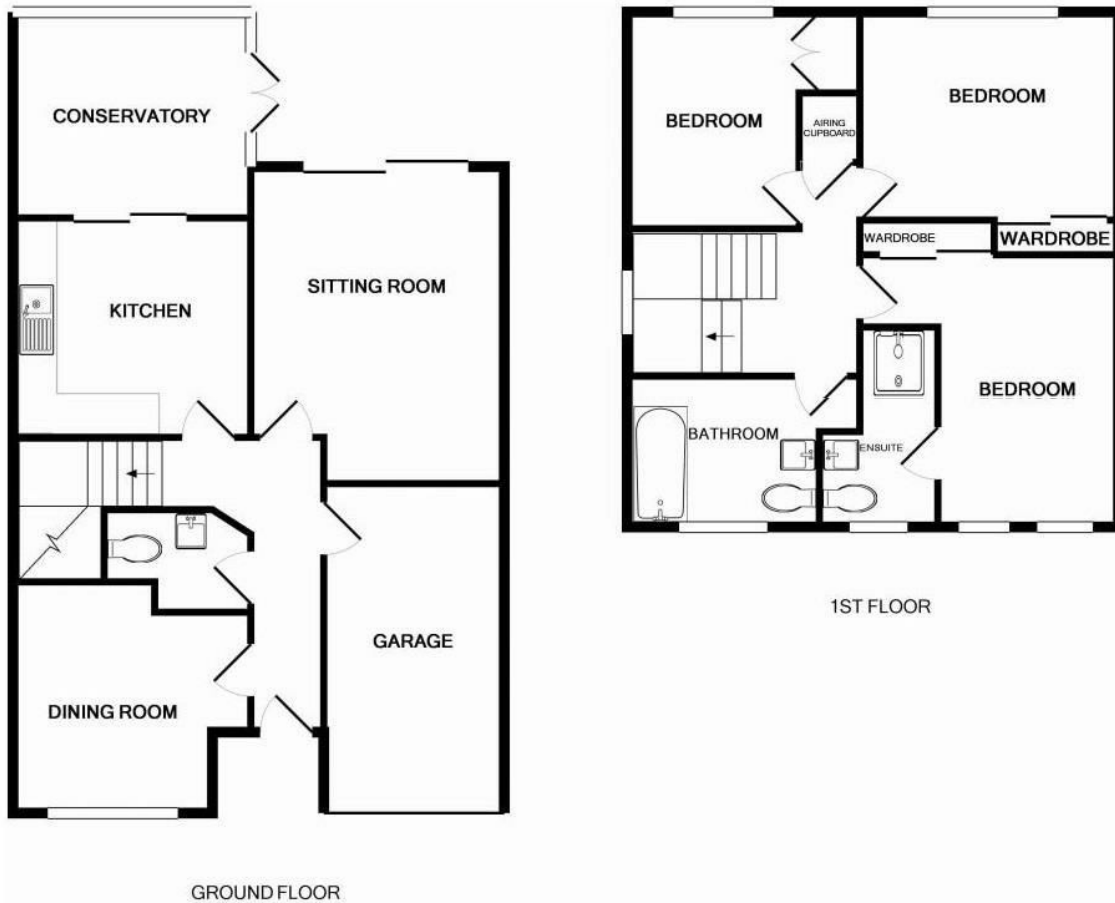
## Garden



Being accessed by the conservatory and lounge,

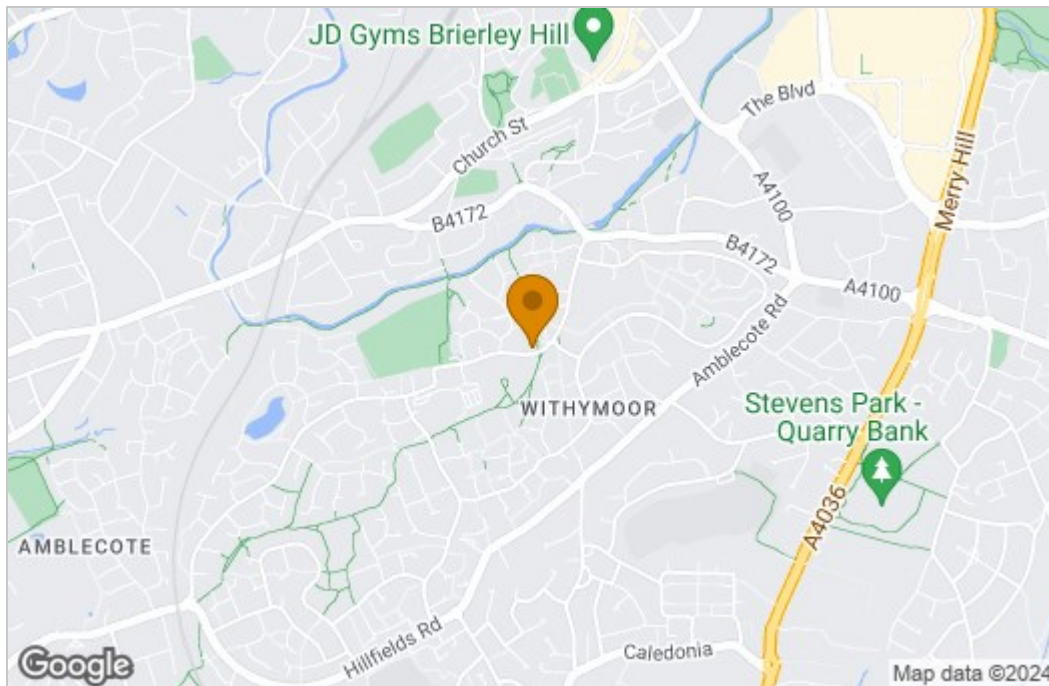
patio area with lawn beyond, mature shrubs  
throughout and a nature pool with water feature

# Floor Plan

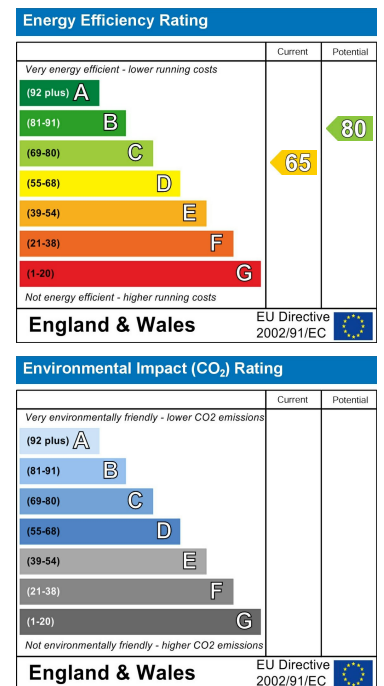


TURNERS LANE, DY5 3SQ  
 Measurements are approximate. Not to scale. Illustrative purposes only  
 Made with Metropix ©2016

# Area Map



# Energy Efficiency Graph



These particulars, whilst believed to be accurate are set out as a general outline only for guidance and do not constitute any part of an offer or contract. Intending purchasers should not rely on them as statements of representation of fact, but must satisfy themselves by inspection or otherwise as to their accuracy. No person in this firm's employment has the authority to make or give any representation or warranty in respect of the property.