

PENARTH'S HOME FOR  
**STYLISH LETTINGS**



**WATERMARK**  
FERRY ROAD



# WATERMARK

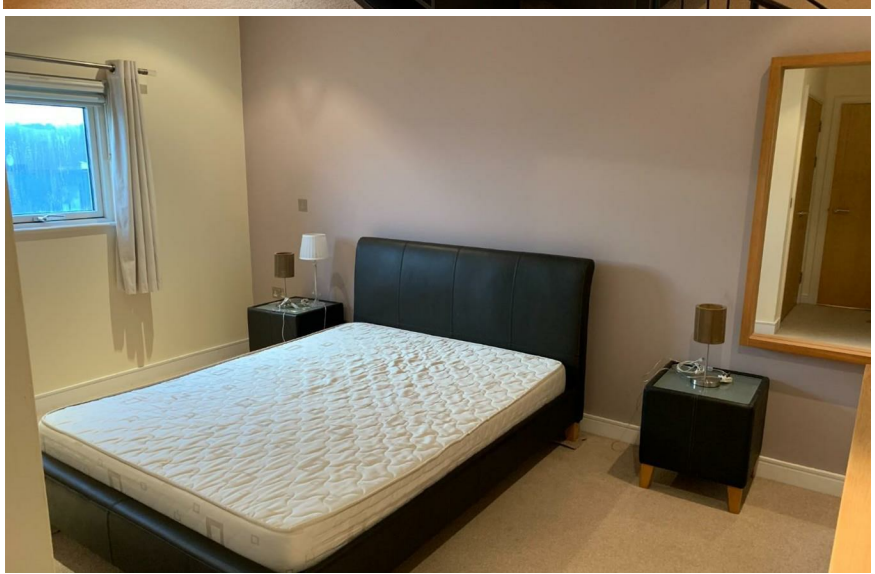
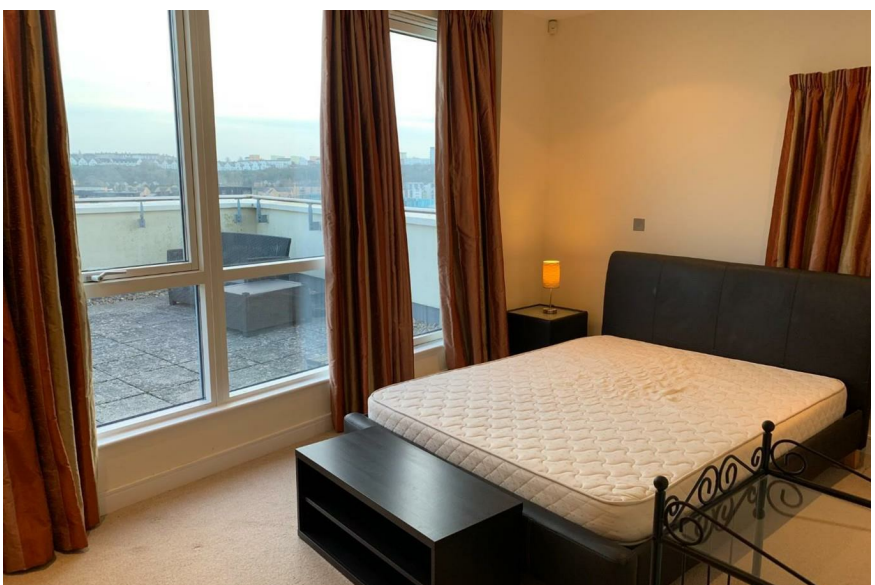
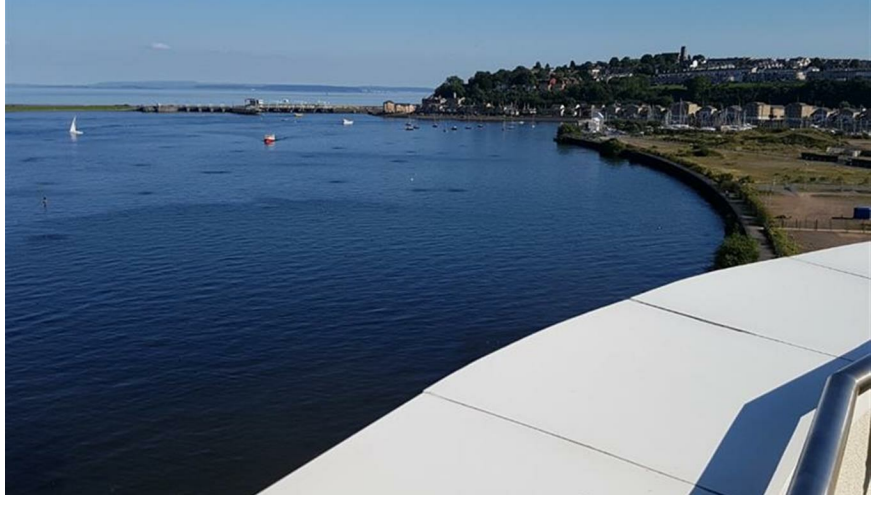
FERRY ROAD, CF11 0JU - £1,450 PCM  
PCM

2 bedroom(s) 2 bathroom(s) sq ft

**\*\* STUNNING WATER VIEWS \*\*LARGE SOUTH FACING TERRACE\*\*TWO BEDROOMS\*\*TWO EN-SUITES PLUS SEPARATE WC \*\***

This well-presented, fully furnished, fifth floor apartment is located within the sought after development of Watermark. Close to all amenities, Cardiff Bay, Penarth Marina and M4 corridor. Internally there is a large entrance hallway, lounge/kitchen/diner (with integrated white goods & access to the terrace), two double bedrooms (both with built in wardrobes, both with en-suite facilities - one with bath). Master with access to the large terrace. A further separate WC. Externally the property benefits from lift, gated under croft carpark with allocated space for 2 vehicles. 12 month tenancies preferred. Ideal for corporate lets/professional sharers. No Pets allowed.

To book a viewing, please follow the 'email agent/request details' section via this website, we will then send you next steps and procedures prior to booking you in.



Energy Efficiency Rating		
	Current	Potential
<i>Very energy efficient - lower running costs</i>		
(92 plus) <b>A</b>		
(81-91) <b>B</b>		
(69-80) <b>C</b>	<b>80</b>	<b>80</b>
(55-68) <b>D</b>		
(39-54) <b>E</b>		
(21-38) <b>F</b>		
(1-20) <b>G</b>		
<i>Not energy efficient - higher running costs</i>		
<b>England &amp; Wales</b>	EU Directive 2002/91/EC	

**PROPERTY SPECIALIST**  
**Alison Hajilambi**  
alisonhajilambi@acjproperties.com  
  
Negotiator